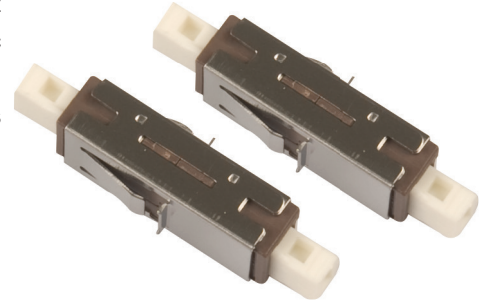


MU ADAPTORS

Alfafonet offers a range of high quality MU adaptors which have high precision alignment sleeves for reliability and improved reconnectability. For Singlemode applications a ceramic sleeve is supplied to ensure a high precision alignment. For multimode applications a phosphor bronze sleeve is supplied. The housing is available in different colours with options for flange or flangeless body, metal clips or inbuilt clips.



Features

- ✓ Complies with IEC 61754-4 and IEC 60874-14 standards
- ✓ High precision alignment sleeve
- ✓ Low insertion loss and improved reconnectability
- ✓ RoHS, REACH compliant
- ✓ Available in simplex and duplex adaptors

Applications

- ✓ Data centers, premise installations, telecommunications, networks
- ✓ Ethernet, fiber channel, ATM, LAN, MAN and WAN

Technical Specification

Optical Performance	Ceramic	Phosphor Bronze	Conformance
Insertion Loss (Typ)	0.1dB	0.15 dB	IEC 61300-3-4
Mating Durability	500		IEC 61300-2-2
Receptacle Retention Force	1N - 2.5N		IEC 61754-20
Operating Temperature	-25 to + 70°C, 12 Cycles		IEC 61300-2-22