

# alfafonet<sup>®</sup>


Complete Connectivity Solutions




**BASK 8**

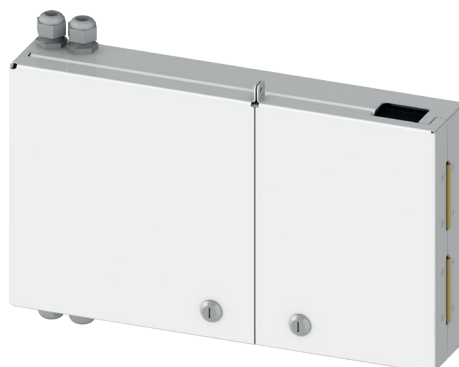
**WALL MOUNTS**  
**Bask 8**


## BASK 8


	Product Family Wall Mount Boxes
---	------------------------------------


Protection Rating IP 20
----------------------------

Protection Rating  IP 20
--



	H 230 mm
	W 410 mm
	D 70 mm

	Available Colors: Light Grey(RAL7035)
---	--

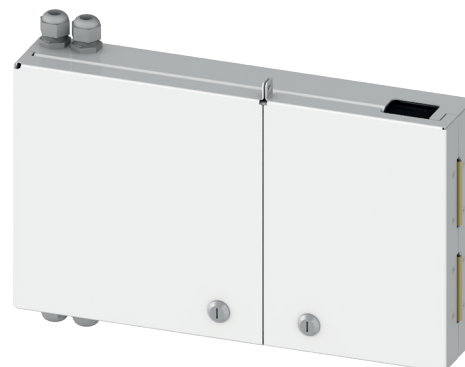
	Weight
	Net ~4.2 kg
	Gross ~4.5 kg

## PRODUCT OVERVIEW

The Unibox Small is designed as a dedicated for indoor fiber connection and building distribution applications. Functional and simple design gives advantages for cable assembly, cable fixing and management. Wide cable entry diameter range makes wide range to use for different cables. Also The Unibox Small provides modular structure and with this modularity, cable managing is easy even cables are connected. The Unibox Small has wide range to use with different adapter plates option and compact design.

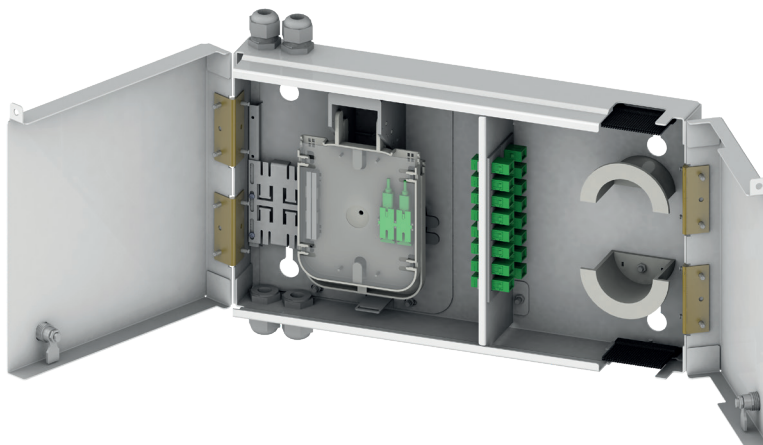
### Features

- › Up to 24 fibres
- › Available with different adapter plates (sold separately to reduce stock value) for all type of connectors
- › Proper for different cable entry diameter
- › Top and bottom cable entry options
- › Removable Cover
- › Light in weight and robust structure
- › Removable and movable Adapter Plates



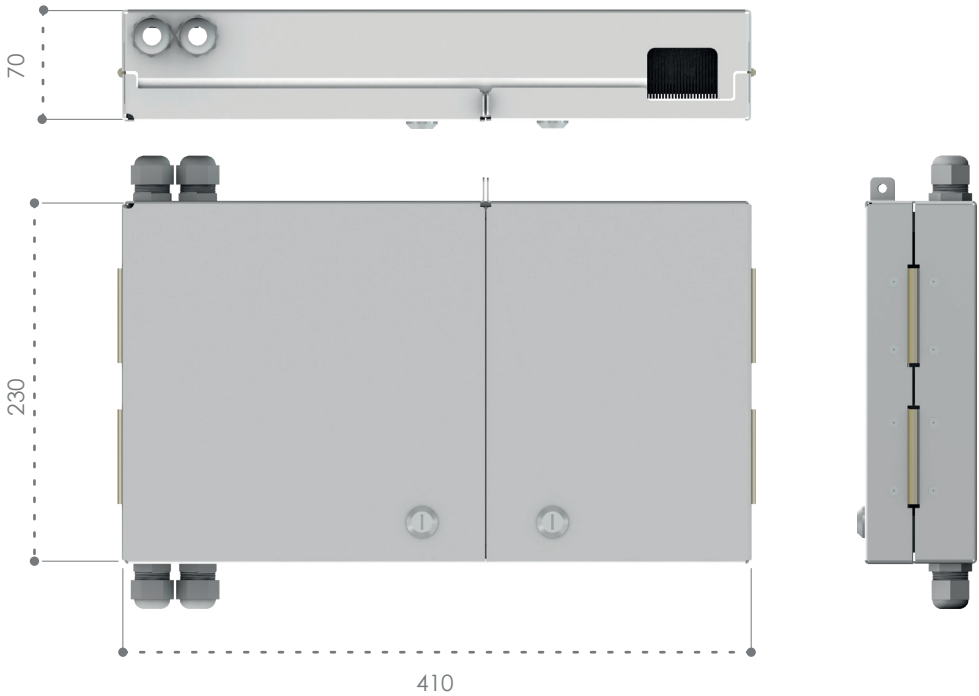
### Specifications

- › Cold Rolled Steel Construction
- › Durable textured powder coat finish available in Light Grey(RAL7035) or in Black (RAL9005)
- › Each side has openings with dust-tight strips for in coming and out going cables
- › Compliant to RoHS

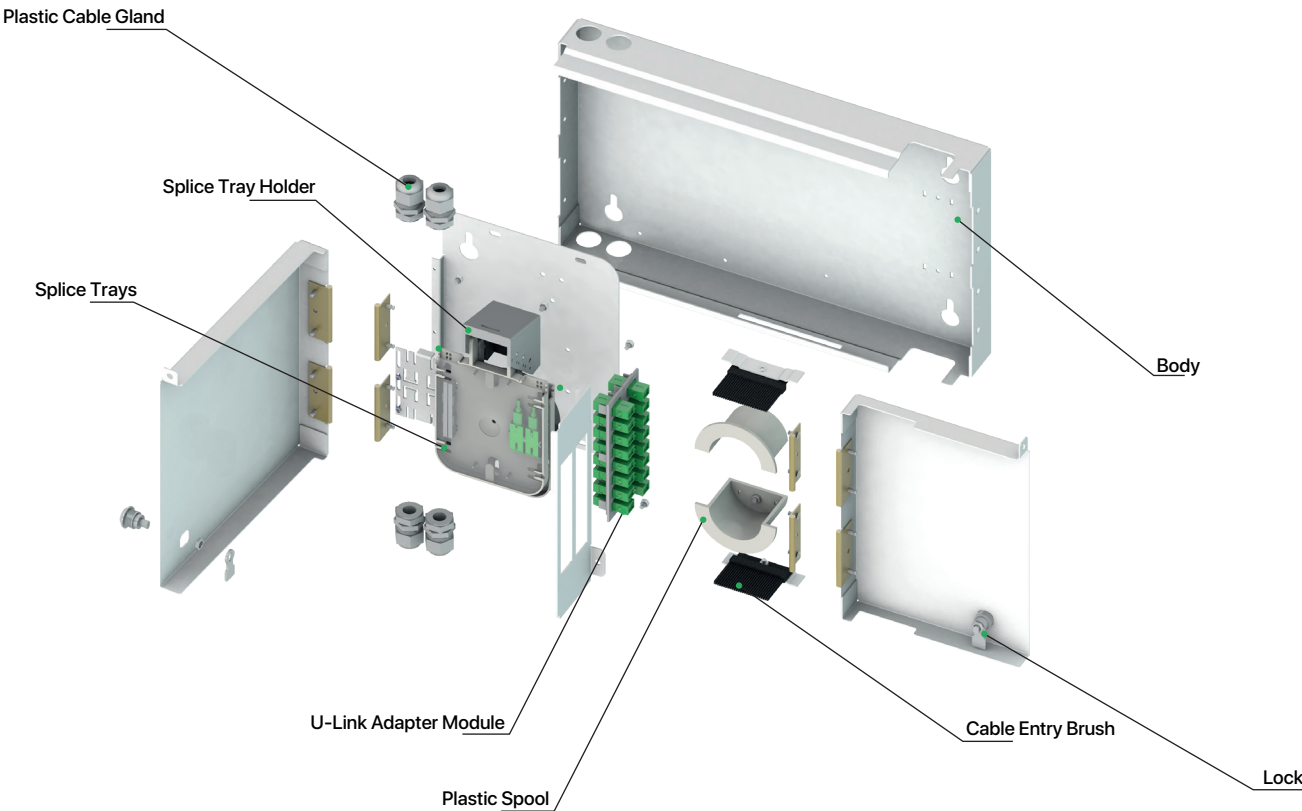


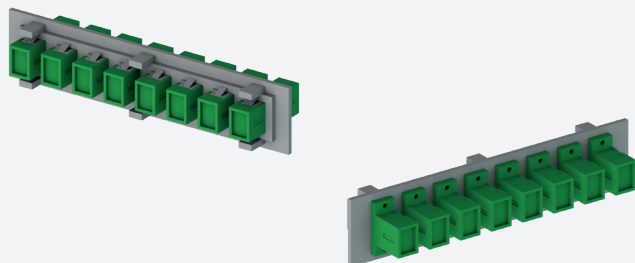
**BASK 8**

**Dimensions**



**Exploded View**



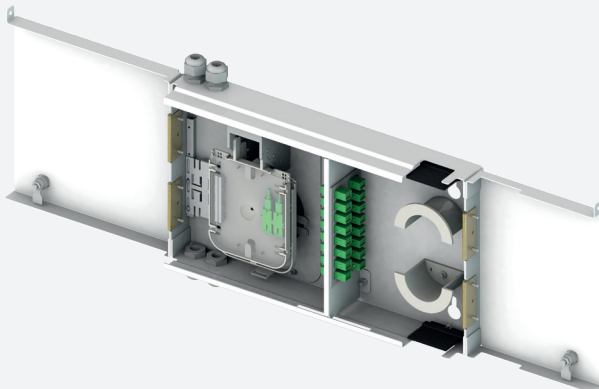
**BASK 8****Ordering Options****✓ Additional U-Link Module**

U-Links can be ordered additional with adapters.



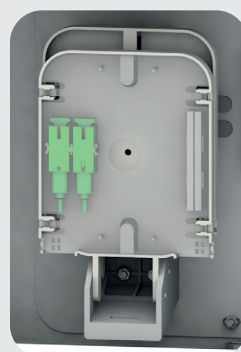
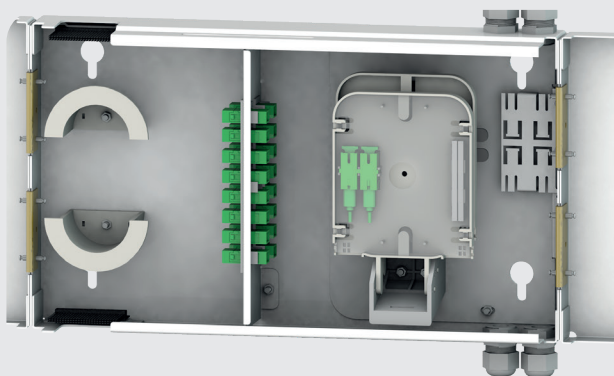
## BASK 8

### Key Features



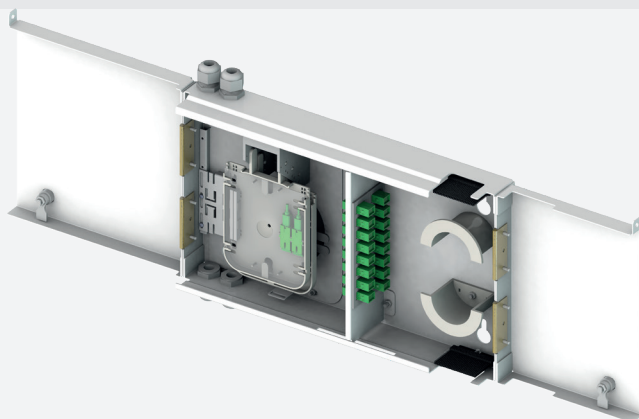
#### ✓ Removable Cover

Cover can be removed and mount easily as snap in type



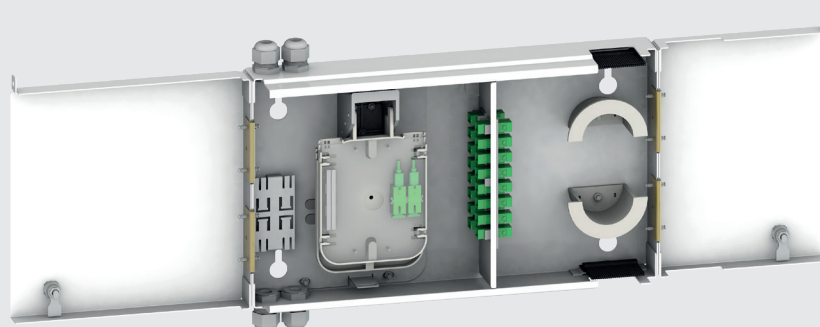
#### ✓ Additional Splice Tray Options

Products can be bought different capacity with same splice tray piece. %25,%50,%75 or Full capacity is available.



#### ✓ Dust-tight Sealing Strips

Proper for different cable entry diameter via dust-tight sealing strips



#### ✓ Compact Design

Cables can be fixed inside, can be organized by spools and cable fixing parts.