

alfafonet[®]

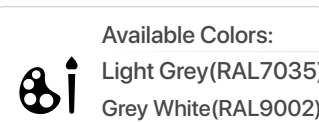
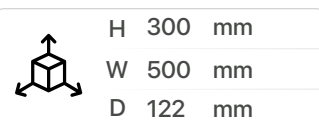
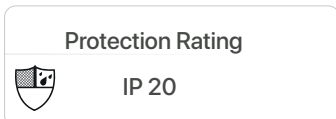
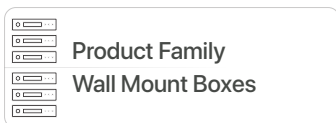
Complete Connectivity Solutions



BASK 48

WALL MOUNTS
Bask 48

BASK 48



PRODUCT OVERVIEW

BASK48 is designed as a dedicated for indoor fiber connection and building distribution applications. Functional and simple design gives advantages for cable assembly, cable fixing and management. Wide cable entry diameter range makes wide range to use for different cables. Also BASK48 provides modular structure and with this modularity, cable managing is easy even cables are connected.

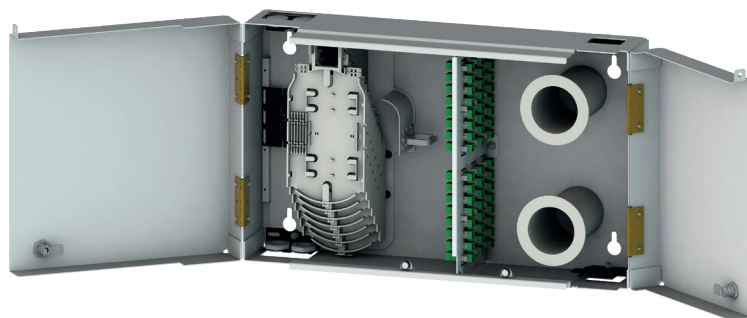
Features

- › Compact Design
- › Bend radius protection throughout the frame
- › Removable Adapter Plate
- › Fully front accessibility
- › Different key for both doors
- › Pre-Assembled Shipment
- › Able to order half or quarter capacity for pre-assembled option
- › Additional safety lock option
- › Big reservation capacity for cables



Specifications

- › Cold Rolled Steel
- › Durable textured powder coat finish available in + white(RAL7035)
- › 300(H)X500(D)X122(W)mm
- › 48 fibres capacity
- › Divided section for cables from costumer side and feeder cable from operator side
- › Compliant to RoHS

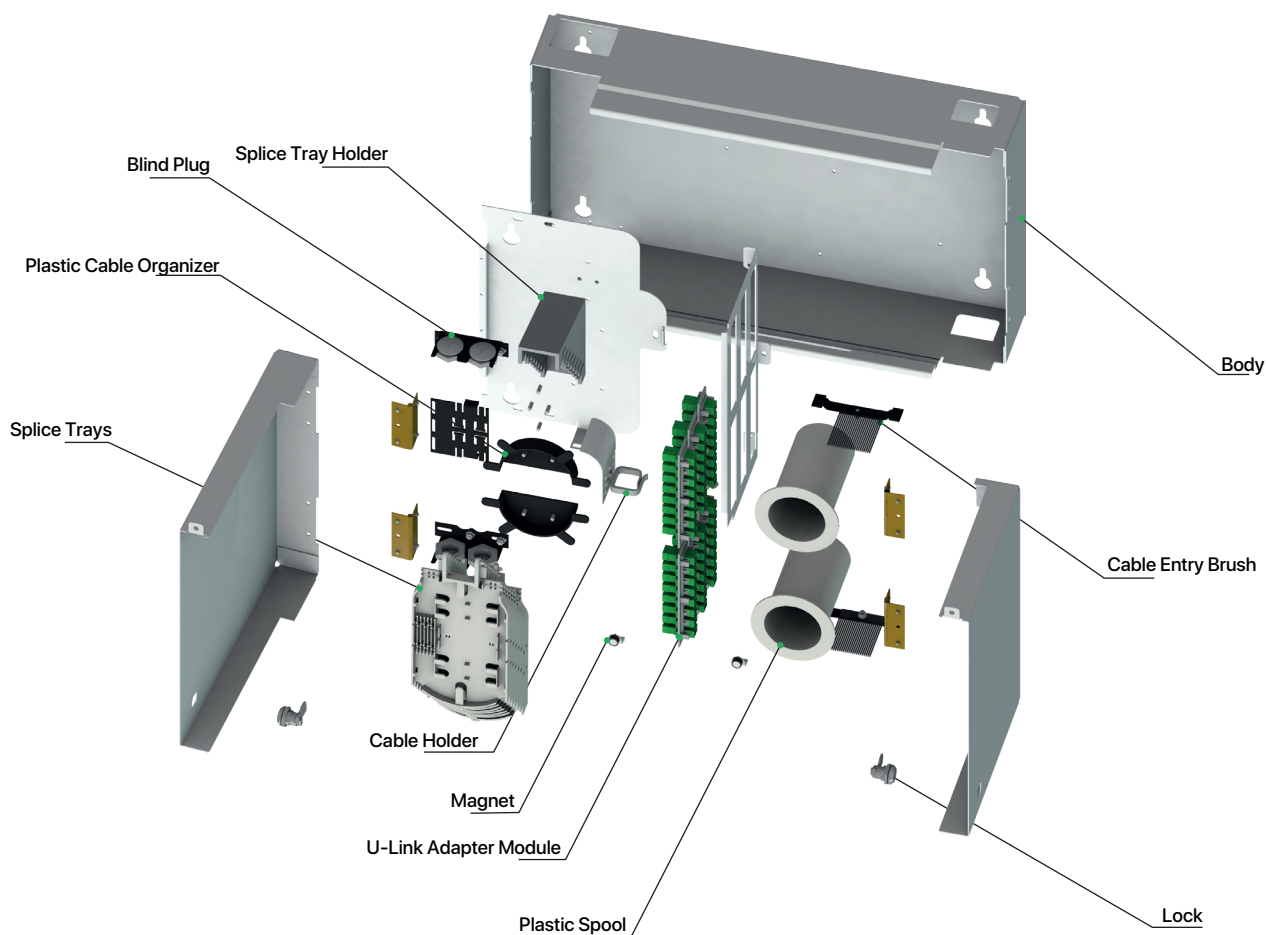


BASK 48

Dimensions

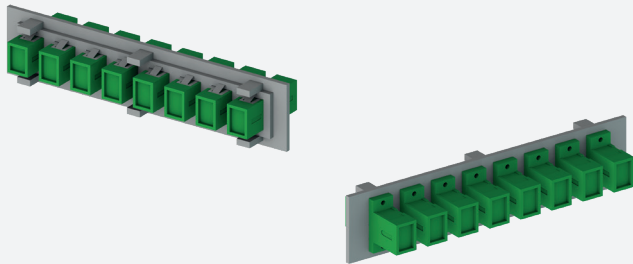


Exploded View



BASK 48

Ordering Options

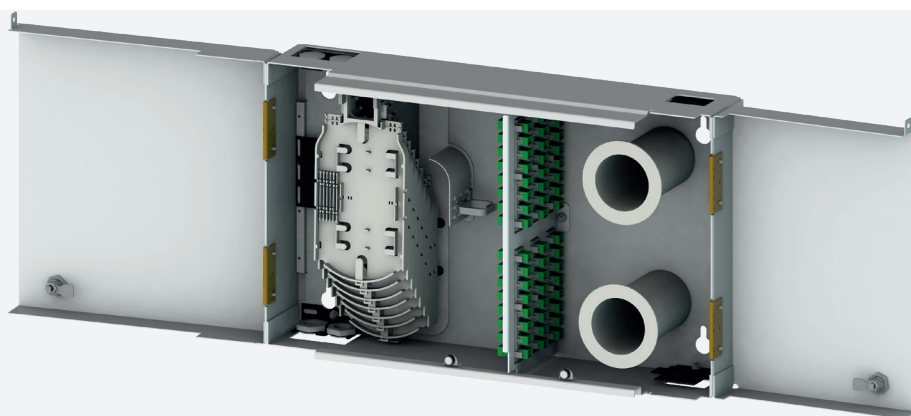


✓ Additional U-Link Module

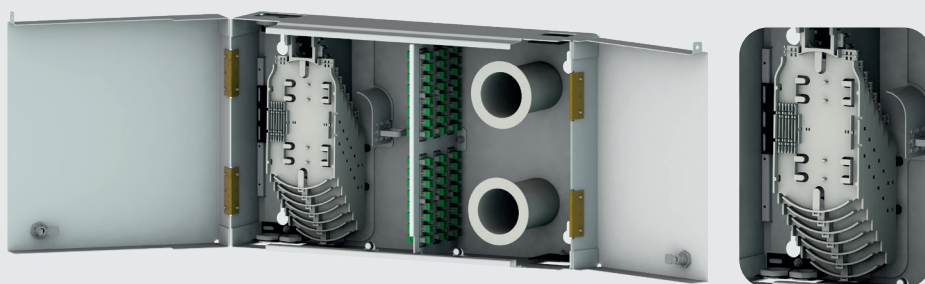
U-Links can be ordered additional with adapters.

Ordering Guide

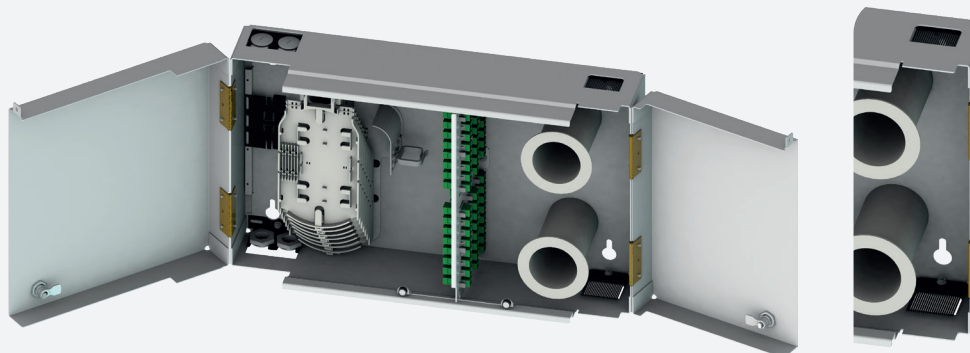
Order No	FO Capacity	Splitter Details	Splice Tray Details	Adapter Quantity
103039-BASK48-W1-025	16 FO	2 pcs. 1x8 PLC SC-APC Splitter	2 Splitter Tray 1 Fusion Splice Tray	8 pcs. SC-APC (1 pcs. U-Link)
103039-BASK48-W1-050	24 FO	3 pcs. 1x8 PLC SC-APC Splitter	3 Splitter Tray 1 Fusion Splice Tray	24 pcs. SC-APC (3 pcs. U-Link)
103039-BASK48-W1-100	48 FO	6 pcs. 1x8 PLC SC-APC Splitter	6 Splitter Tray 2 Fusion Splice Tray	48 pcs. SC-APC (6 pcs. U-Link)

BASK 48**Key Features****✓ Removable Cover**

Cover can be removed and mount easily as snap in type

**✓ Additional Splice Tray Options**

Products can be bought different capacity with same splice tray piece. %25,%50,%75 or Full capacity is available.



**✓ Dust-tight Sealing Strips**

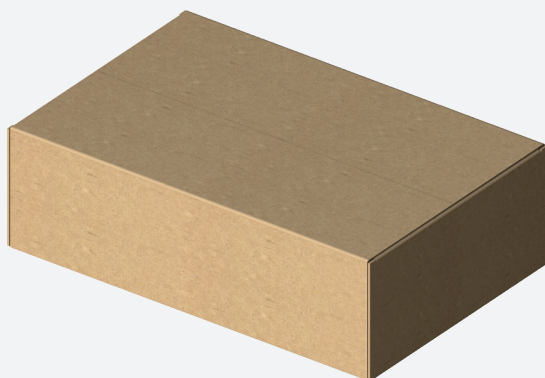
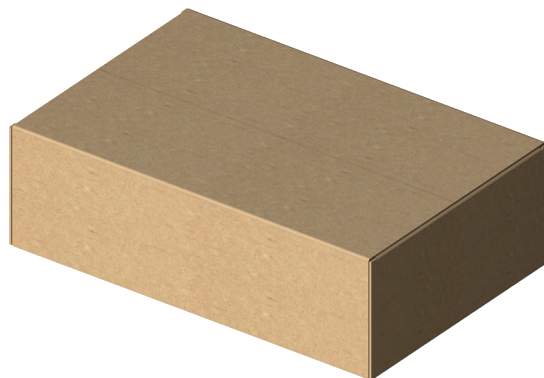
Proper for different cable entry diameter via dust-tight sealing strips

**✓ Cable Management**

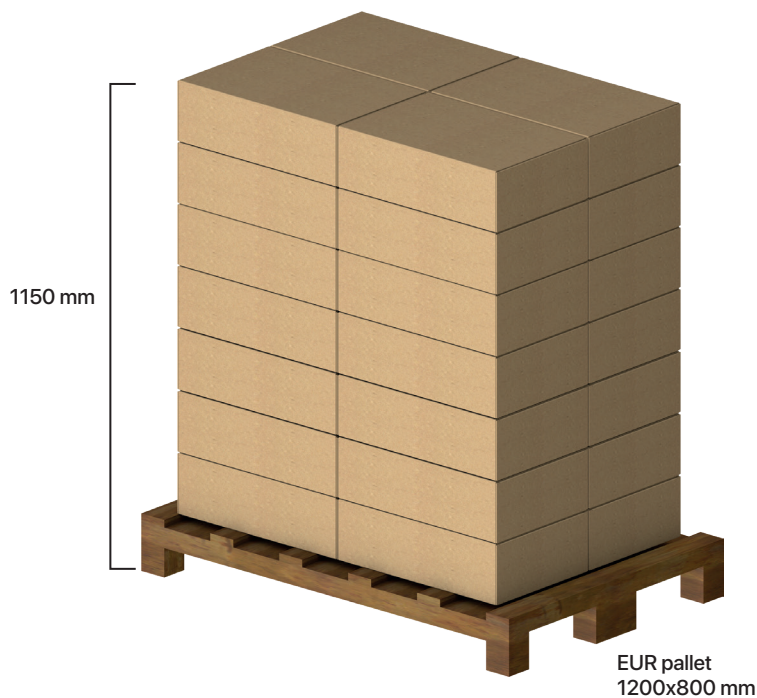
Cables can be fixed inside, can be organized by spools and cable fixing parts.

BASK 48**Packaging Details****Standart Accesories (Set)**

	1 pcs. Dowel Set (Wall fixing set)	Protection Sleeve(60 mm) 2 pcs.	
---	---------------------------------------	---------------------------------------	---



510x330x150 mm
Box Weight: ~ 11,9 kg



1 EUR Pallet includes;
28 Bask48 Wall Mount Boxes

EUR Pallet Weight: ~345 kg