

alfafonet[®]

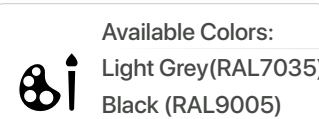
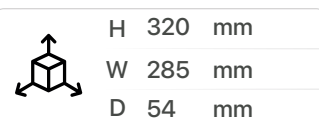
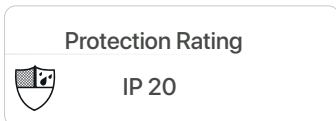
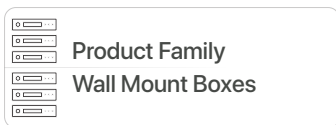
Complete Connectivity Solutions



UNIBOX MEDIUM

WALL MOUNTS
Unibox

UNIBOX MEDIUM



PRODUCT OVERVIEW

The Unibox Medium is designed as a dedicated for indoor fiber connection and building distribution applications. Functional and simple design gives advantages for cable assembly, cable fixing and management. Wide cable entry diameter range makes wide range to use for different cables. The Unibox Medium provides modular structure and with this modularity cable managing is easy even cables are connected. The Unibox Medium has wide range to use with different adapter plates option and compact design.

Features

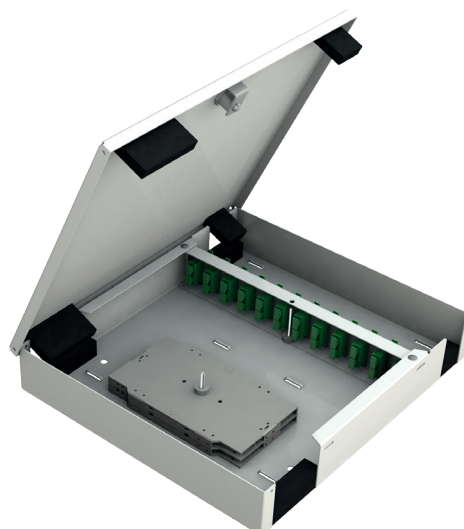
- › Up to 48 fibres
- › Available with different adapter plates (sold separately to reduce stock value) for all type of connectors
- › Printed port numbers on the adapter plate
- › Proper for different cable entry diameter
- › Top and bottom cable entry options
- › Removable Cover
- › Light in weight and robust structure
- › Removable Adapter Plates
- › A maximum of 4 splice cassettes and one distribution plate can be fitted

Specifications

- › Cold Rolled Steel Construction
- › Durable textured powder coat finish available in Light Grey(RAL7035) or in Black (RAL9005)
- › Each side has openings with dust-tight strips for in coming and out going cables
- › Compliant to RoHS



Scan QR Code
View Brochure*

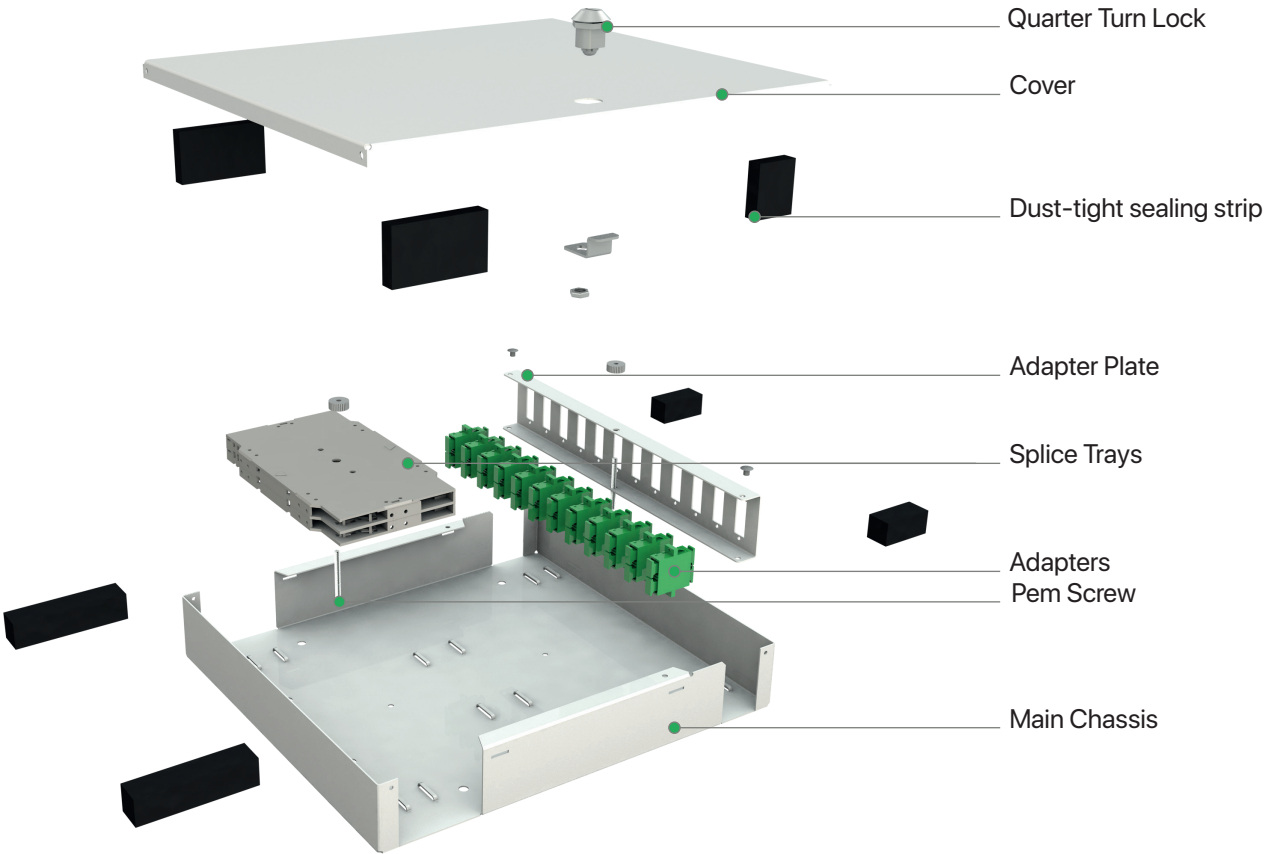


UNIBOX MEDIUM

Dimensions

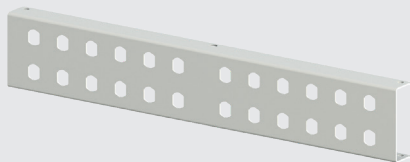


Exploded View



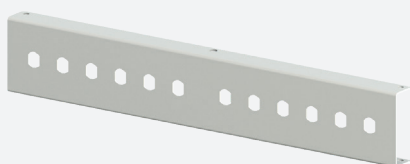
UNIBOX MEDIUM

Ordering Options



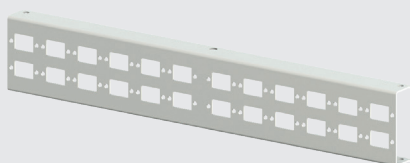
24 ST Simplex or 24 FC Simplex adapter plate (D-hole)

103012.01.CC



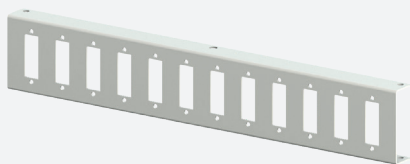
12 ST Simplex or 12 FC Simplex adapter plate (D-hole)

103012.02.CC



24 SC Simplex or 24 LC Duplex adapter plate (D-hole)

103012.03.CC



12 SC Duplex or 24 LC Quad adapter plate (D-hole)

103012.04.CC

Ordering Guide

	Ordering Option	Color	Splice Cassette	Splice Cassette Quantity		Adapter Type	Structure	Mode	Pigtail	Additional Options
103012 In Ordering Option Article for Adapter Plates		Light Grey LG	Empty 0	Zero 0	Empty 0	Empty 0	Empty 0	Empty 0	Empty 0	Empty 0
		Black BL	ALF-CMPC 1	One 1	LC 1	Simplex 1	Single / PC 1	Inside Plastic Bag 1 Color 1	Screwed Rear to Front 1	
			ALF-A 2	Two 2	SC 2	Duplex 2	Single / APC 2	Inside Plastic Bag 6 Color 2	Screwed Front to Rear 2	
			ALF-B 3	Three 3	ST 3	Quad 3	Multimode / OM1 3	Inside Plastic Bag 12 Color 3	Screwed with Nut 3	
			ALF-C 4	Four 4	FC 4		Multimode / OM2 4	Fully Assembled 1 Color 4		
							Multimode / OM3 5	Fully Assembled 6 Color 5		
							Multimode / OM4 6	Fully Assembled 12 Color 6		
							Multimode / OM5 7			

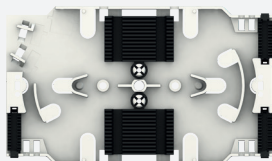
103012 . PC-CC* / 0000000

Scan QR Code
View Brochure

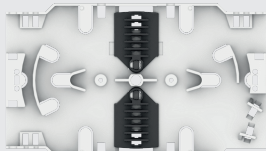
103012-CC*

Unibox Medium Fibre Optic Wall Mount Box - With Body,
Front Door, (without Adapter plate), Colour: Light Grey-RAL7035,
or Black RAL9005, (1 pcs. Dowel Set, 4 pcs. 2,5mmx100 Cable Ties)

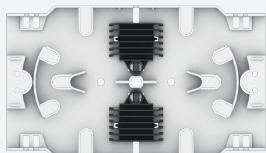
*CC= Colour code, PC= Plate code for customers to define while ordering. Brochure contains key features, optional part packing details, standart accessories.

UNIBOX MEDIUM**Splice Tray Options****ALF-CMPC**

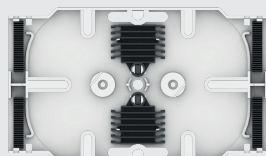
Dimensions (with Cover) : 10 x 91.8 x 155 mm
Body Dimensions : 8 x 91.8 x 155 mm
Capacity : up to 24

**ALF-A**

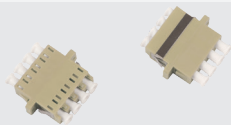
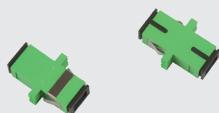
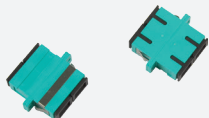
Dimensions (with cover) : 10 x 91.8 x 155 mm
Dimensions : 8 x 91.8 x 155 mm
Capacity : up to 24

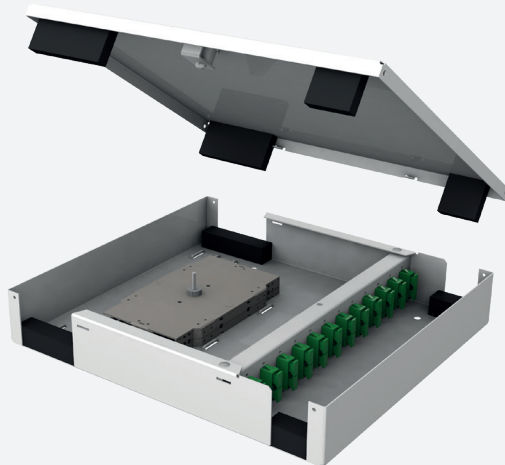
**ALF-B**

Dimensions (with cover) : 10 x 91.8 x 155 mm
Dimensions : 8 x 91.8 x 155 mm
Capacity : up to 24

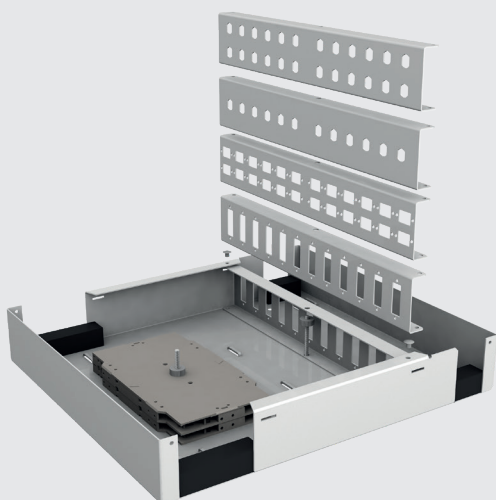
**ALF-C**

Dimensions (with cover) : 10 x 91.8 x 155 mm
Dimensions : 8 x 91.8 x 155 mm
Capacity : up to 24

Adapter Series**LC Duplex****LC Quad****LC Duplex Square****SC Simplex****SC Duplex****ST****FC**

UNIBOX MEDIUM**Key Features****✓ Removable Cover**

Cover can be removed and mount easily as snap in type



**✓ Different Adapter Plate Options**

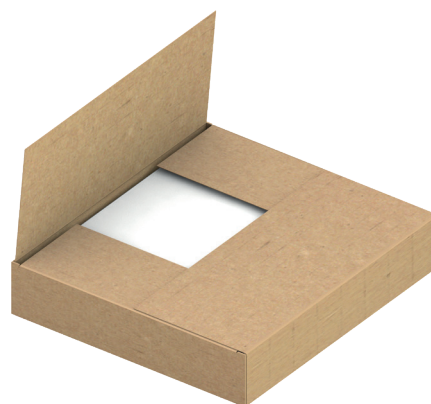
Available with different front plates (sold separately to reduce stock value) for all type of connectors

**✓ Dust-tight Sealing Strips**

Proper for different cable entry diameter via dust-tight sealing strips

UNIBOX MEDIUM**Packaging Details****Standart Accesories (Set)**

	1 pcs. Dowel Set (Wall fixing set)	
		Tire wrap (2.5x100)mm 4 pcs

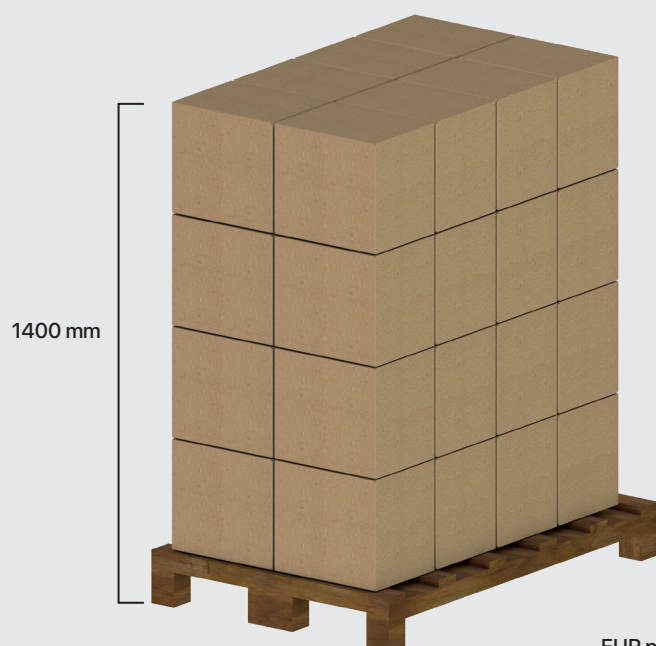


330x300x65 mm
Box Weight: ~ 2,3 kg



1 Outer Box includes
4 Unibox Medium Fibre Optic Wall Mount

345x315x280 mm
Box Weight: ~ 9,3 kg



1 EUR Pallet includes;
128 Unibox Medium Fibre Optic Wall Mount

EUR Pallet Weight: ~315 kg

EUR pallet
1200x800 mm