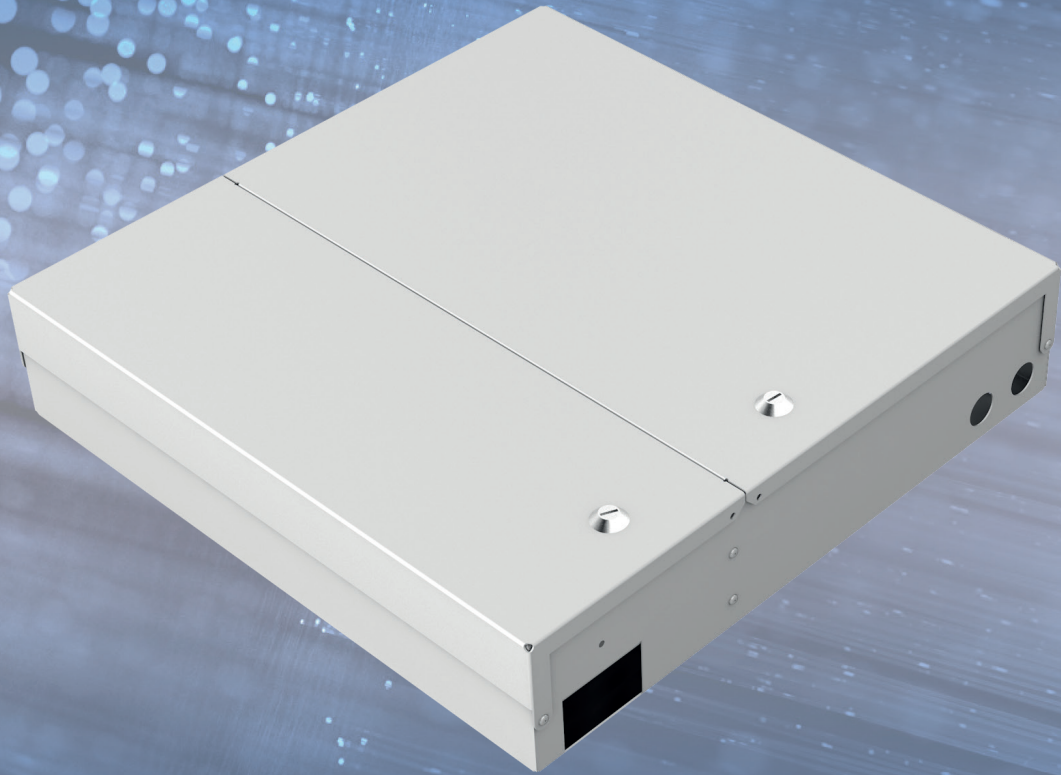


alfafonet®

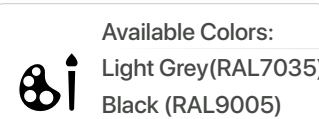
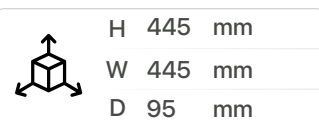
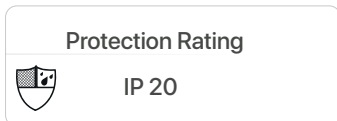
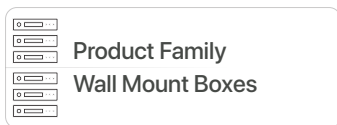
Complete Connectivity Solutions



UNIBOX LARGE

WALL MOUNTS
Unibox

UNIBOX LARGE



PRODUCT OVERVIEW

The Unibox Large is designed as a dedicated for indoor fiber connection and building distribution applications. Functional and simple design gives advantages for cable assembly, cable fixing and management. Wide cable entry diameter range makes wide range to use for different cables. The Unibox Large provides modular structure and with this modularity, cable managing is easy even cables are connected. The Unibox Large has wide range to use with different adapter plates option.

Features

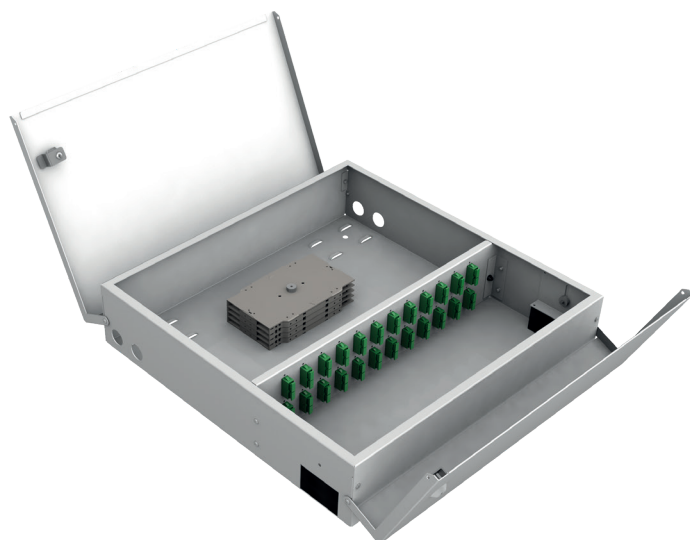
- › Up to 96 fibres
- › Available with different adapter plates (sold separately to reduce stock value) for all type of connectors
- › Printed port numbers on the adapter plate
- › Top and bottom cable entry options
- › Different passwords of key for each side cover
- › Light in weight and robust structure
- › Removable Adapter Plates via Snaplatches
- › Maximum of 5 splice cassesstes and one distrubition plate can be fitted

Specifications

- › Cold Rolled Steel Construction
- › Durable textured powder coat finish available in Light Grey(RAL7035) or in Black (RAL9005)
- › Proper for different cable entry diameter
- › 4 pcs. PG16 or PG13,5 Cable grand entry holes
- › 2 openings with dust-tight strips for in coming and out going cables,height adjustable
- › Compliant to RoHS



Scan QR Code
View Brochure*

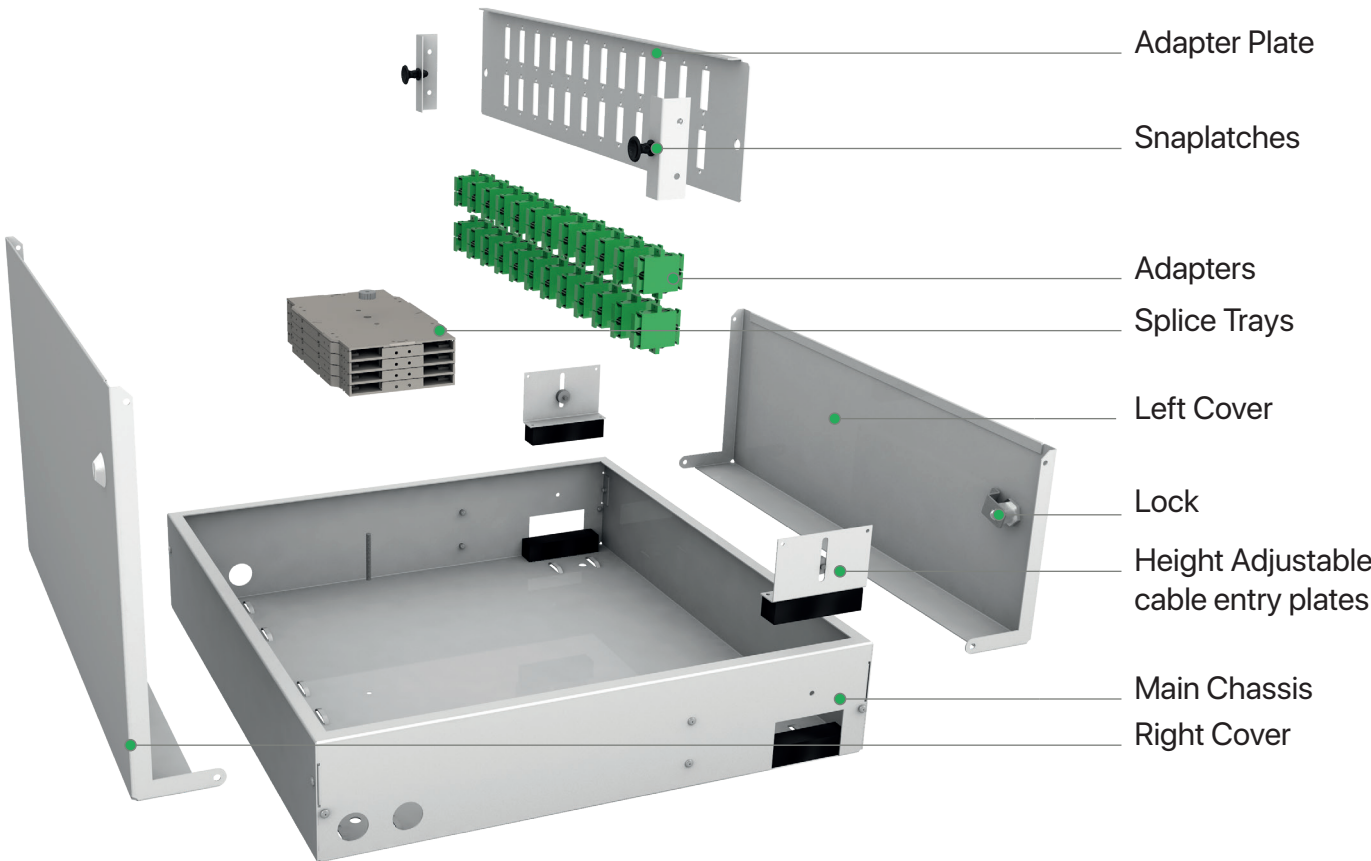


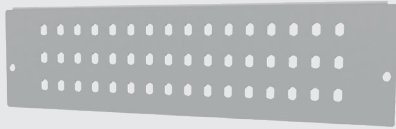
UNIBOX LARGE

Dimensions



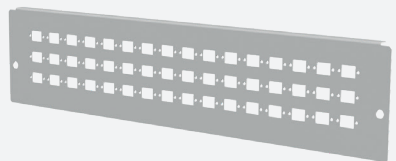
Exploded View



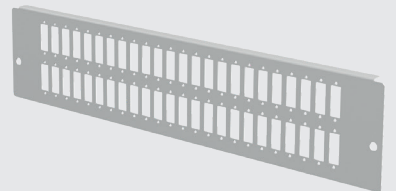
UNIBOX LARGE**Ordering Options**

48 ST Simplex or 48 FC Simplex adapter plate (D-Hole)

103012.01.CC

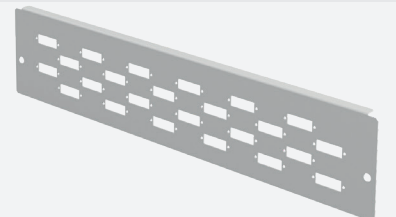
48 SC Simplex or 48 LC Duplex
E2000® Simplex (D-Hole) adapter plate

103012.02.CC



48 SC Duplex or 48 LC Quad adapter plate

103012.03.CC



24 SC Duplex or 24 LC Quad Shifted adapter plate

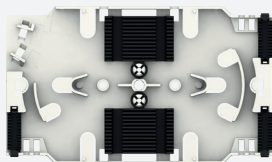
103012.04.CC

Ordering Guide

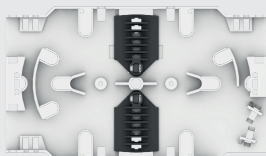
Ordering Option	Color	Splice Cassette	Splice Cassette Quantity		Adapter Type		Structure		Mode		Pigtail		Additional Options	
103022 In Ordering Option Article for Adapter Plates	Light Grey	LG	Empty	0	Zero	0	Empty	0	Empty	0	Empty	0	Empty	0
	Black	BL	ALF-CMPC	1	One	1	LC	1	Simplex	1	Single / PC	1	Inside Plastic Bag 1 Color	1
			ALF-A	2	Two	2	SC	2	Duplex	2	Single / APC	2	Inside Plastic Bag 6 Color	2
			ALF-B	3	Three	3	ST	3	Quad	3	Multimode / OM1	3	Inside Plastic Bag 12 Color	3
			ALF-C	4	Four	4	FC	4			Multimode / OM2	4	Fully Assembled 1 Color	4
					Five	5					Multimode / OM3	5	Fully Assembled 6 Color	5
											Multimode / OM4	6	Fully Assembled 12 Color	6
											Multimode / OM5	7		

103022. PC-CC* / 00000000Scan QR Code*
View Brochure**103022-CC***Unibox Large Fibre Optic Wall Mount Box - With Body,
Front Door, (without Adapter plate), Colour: Light Grey-RAL7035,
or Black RAL9005, (1 pcs. Dowel Set, 4 pcs. 2,5mmx100 Cable Ties)

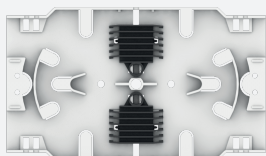
*CC= Colour code, PC= Plate code for customers to define while ordering. Brochure contains key features, optional part packing details, standart accessories.

UNIBOX LARGE**Splice Tray Options****ALF-CMPC**

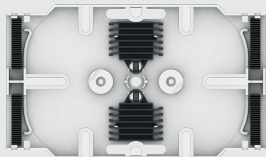
Dimensions (with Cover) : 10 x 91.8 x 155 mm
Body Dimensions : 8 x 91.8 x 155 mm
Capacity : up to 24

**ALF-A**

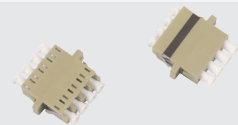
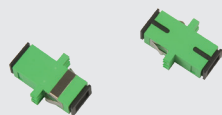
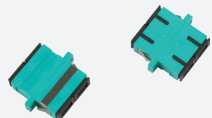
Dimensions (with cover) : 10 x 91.8 x 155 mm
Dimensions : 8 x 91.8 x 155 mm
Capacity : up to 24

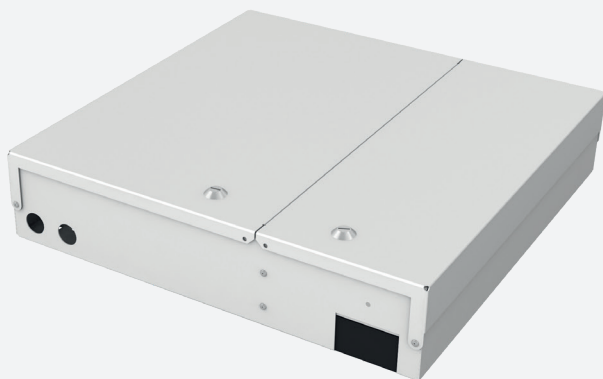
**ALF-B**

Dimensions (with cover) : 10 x 91.8 x 155 mm
Dimensions : 8 x 91.8 x 155 mm
Capacity : up to 24

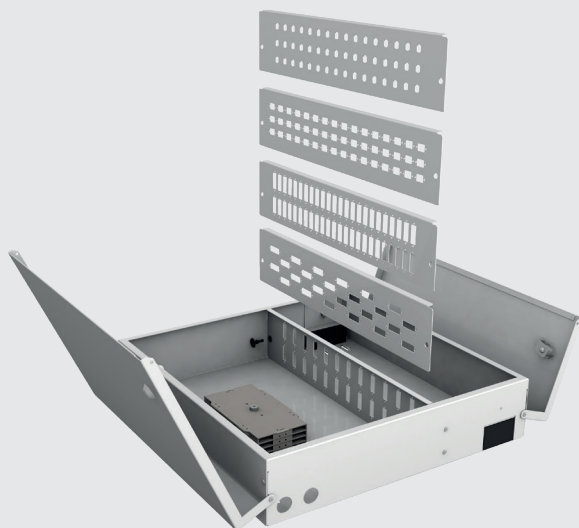
**ALF-C**

Dimensions (with cover) : 10 x 91.8 x 155 mm
Dimensions : 8 x 91.8 x 155 mm
Capacity : up to 24

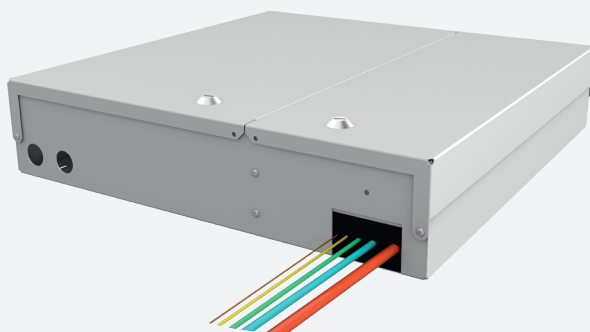
Adapter Series**LC Duplex****LC Quad****LC Duplex Square****SC Simplex****SC Duplex****ST****FC**

UNIBOX LARGE**Key Features****✓ Two different locked Cover**

2 different password for
keys of each side cover




**✓ Different Adapter Plate Options**

Available with different front plates
(sold separately to reduce stock value) for all type of connectors

**✓ Dust-tight Sealing Strips**

Proper for different cable entry diameter via
dust-tight sealing strips

UNIBOX LARGE**Packaging Details****Standart Accesories (Set)**

	1 pcs. Dowel Set (Wall fixing set)	
	PG16 Plastic Cable Gland 4pcs.	



450x450x105 mm
Box Weight: ~ 5,5 kg



465x465x335 mm
Box Weight: ~ 17kg



1 EUR Pallet includes;
36 Unibox Large Fibre Optic Wall Mount

EUR Pallet Weight: ~210 kg

EUR pallet
1200x800 mm