

alfafonet[®]


Complete Connectivity Solutions




Compact DRB

WALL BOXES
Compact DRB


COMPACT DRB SMALL



Product Family
Compact DRC




H	120	mm
W	120	mm
D	35	mm

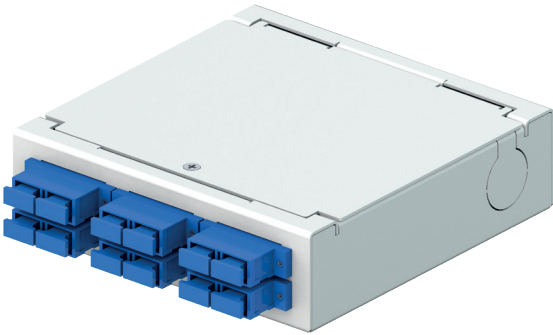


Available Colors:
Light Grey(RAL9016)

Protection Rating



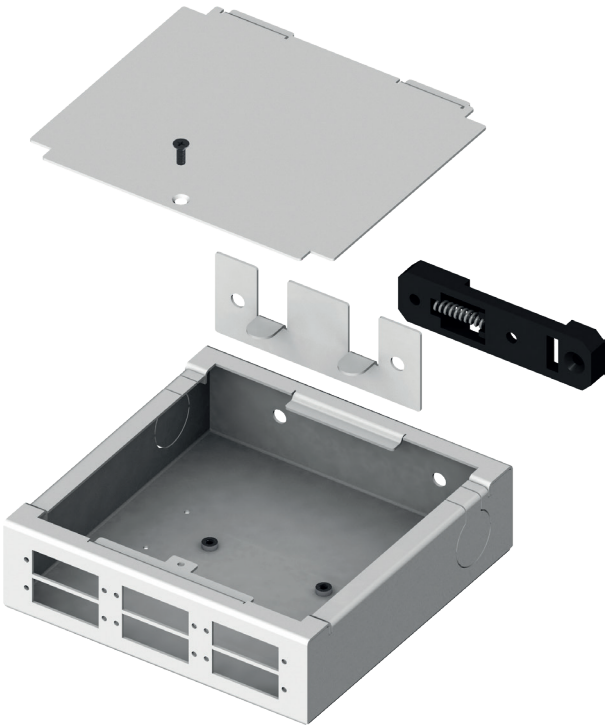
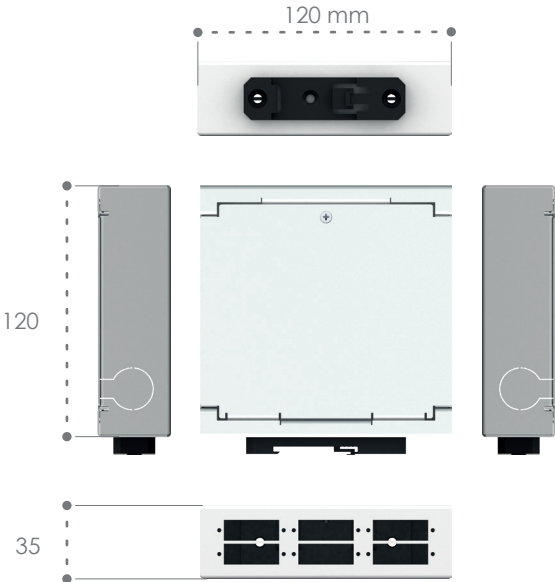
IP 20



Features

- DIN Rail mounting available
- Cold-rolled steel, electrostatic paint
- Suitable for different adapter; FC-ST-SC-LC..
- Cable entry/exit points


Dimensions




Ordering Guide

Product No	Product Description	Splice Tray
202010	Compact DRB Small	


COMPACT DRB MEDIUM



Product Family
Compact DRC



Protection Rating
IP 20



H 100 mm
W 100 mm
D 60 mm



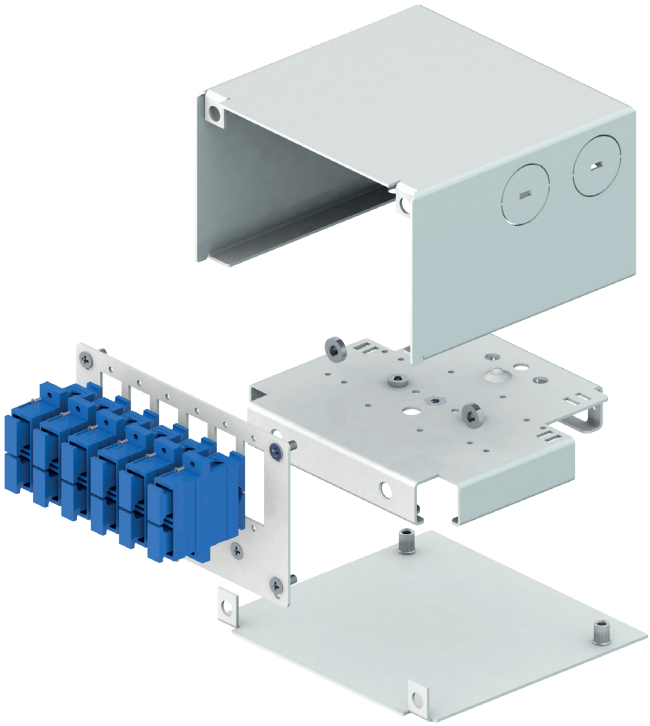
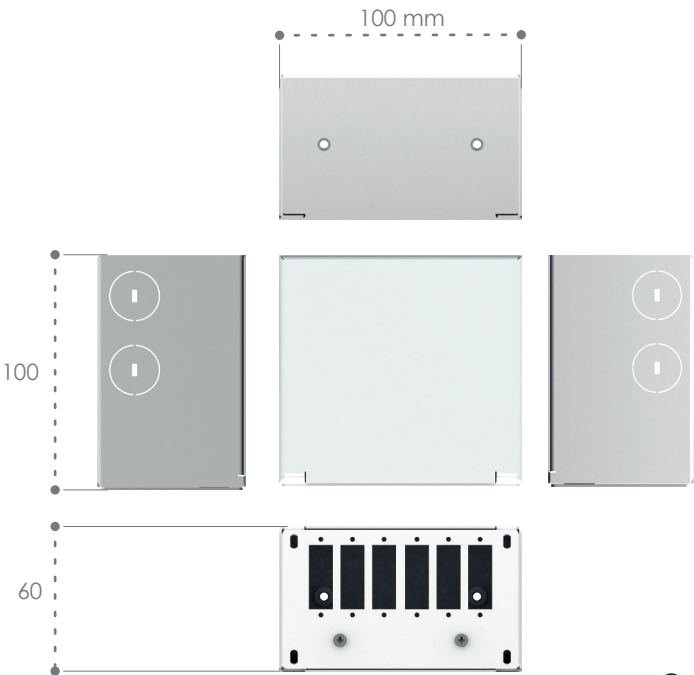
Available Colors:
Light Grey(RAL9016)



Features

- › DIN Rail mounting available
- › Cold-rolled steel, electrostatic paint
- › Suitable for different adapter; FC-ST-SC-LC..
- › Cable entry/exit points


Dimensions



Ordering Guide


Product No	Product Description	Splice Tray
202011	Compact DRB Medium	

COMPACT DRB LARGE




Product Family

Compact DRC



Protection Rating


IP 20



H 137 mm

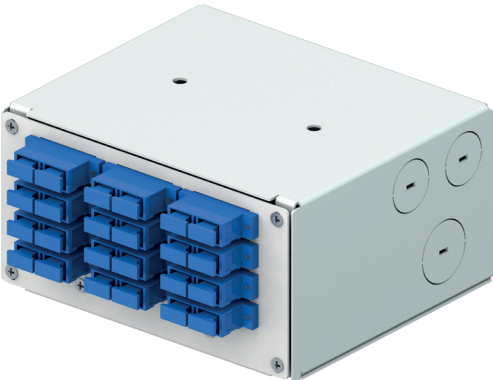
W 115 mm

D 71 mm



Available Colors:

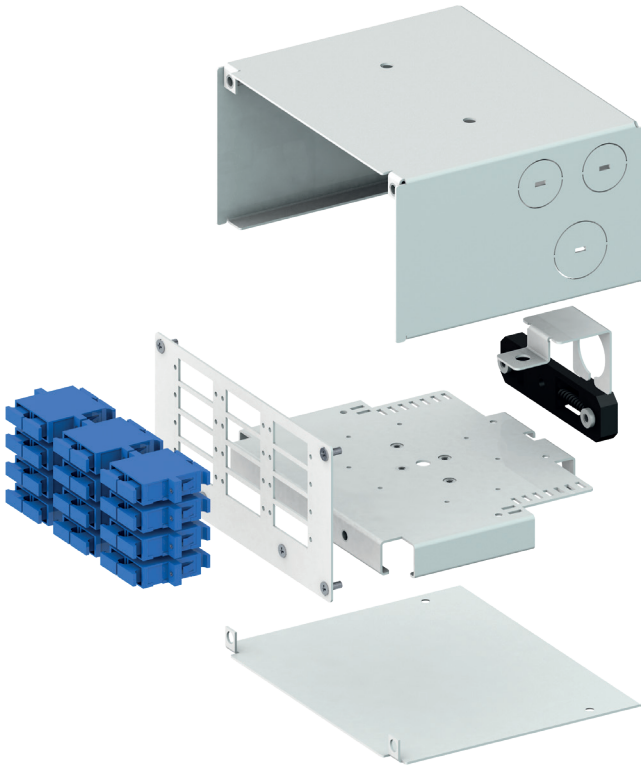
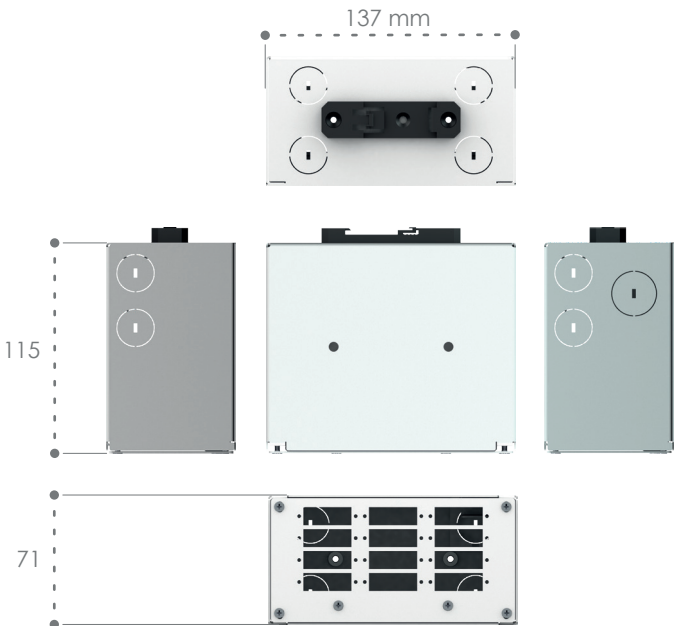
Light Grey(RAL9016)



Features

- DIN Rail mounting available
- Cold-rolled steel, powder coating
- Suitable for different adapter; FC-ST-SC-LC..
- Cable entry/exit points

Dimensions



Ordering Guide

Product No	Product Description	Splice Tray
202012	Compact DRB Large	