

alfafonet[®]

Complete Connectivity Solutions

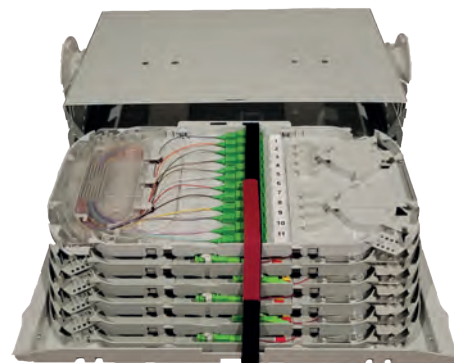


ALFA-UPSM UNIVERSAL PATCH/SPLICE MODUL

UPSM

Universal Patch/Splice Module

The Universal Patch/Splice Module is mainly used for patching only (patch cords, connectorized breakout cables, intra-facility cables) or for splicing loose tube cables and patching the pigtails to patch cords. Sliding trays are used instead of front patching, pivoting ones when full easy access at both sides of the connection is required. Within the same tray to patch a connector in a different position it is possible with a perfect control of the extra length. Accurate design and compact adapters allow to accommodate 12 termination (24 using SFF connectors) per tray. Easy-removable adapter holders make easy to access to each connection in the shelf. Kits to attach cables at the side or the back of the shelf are available. PLC splitters as well as FBT splitters or other optical passive components can be integrated. Versions preloaded with adapters and pigtails are available.



Features

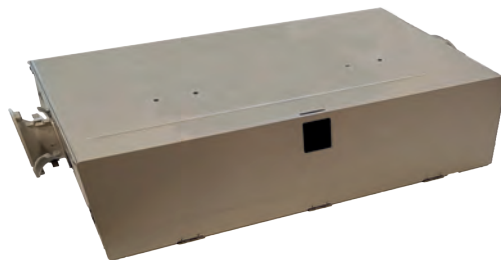
- ✓ Accepts loose tube, distribution and pre terminated cables
- ✓ Splice-Splice, Splice-Patch and Patch-Patch Tray Options
- ✓ Pulled-open front pulled-out tray
- ✓ Available in 4 different heights (44, 88, 125 and 167 mm)

Specifications

- ✓ Cold Rolled Steel or Aluminium
- ✓ Durable textured powder coat finish available in black or white
- ✓ Universal 19/21" EIA/TIA rack compatibility
- ✓ Bend controls guide and protect the pigtail cable and ensure controlled cable bending.
- ✓ Front and back side mounting options
- ✓ Standard cable stub location is left/right side
- ✓ Optional cable stub location is rear

Applications

- ✓ Telecommunications closets
- ✓ Data Centers
- ✓ Customer Premise
- ✓ LAN / WAN Networks
- ✓ Central Offices / Headends
- ✓ Hubs / Cabinets / Remote Terminals
- ✓ FTTH / FTTB Networks



Universal Patch/Splice Module

CHARACTERISTICS		TRAY	UNIT	19"	ETSI
Dimensions (without mounting brackets)	Height	2	mm	44	
		4		88	
		6		125	125
		8		167	
	Width			440	490
	Depth			280	
Material	Cold Rolled Steel				
Colour	Electrostatic Powder Coated RAL 7035				

PART NUMBER	REFERENCE PN	MODULE TRAY CAPACITY	CONNECTORS	
			STD	SFF
105001	ALF-UPSM-1U19	2	24	48
105002	ALF-UPSM-2U19	4	48	96
105003	ALF-UPSM-3U19	6	72	144
105023	ALF-UPSM-3U21	6	72	144
105004	ALF-UPSM-4U19	8	96	192

PART NUMBER	DESCRIPTION
ALF-UPSM-1U19-PP12/012110	UPSM 1RU Pull-Out Type ODF Module with Cable Management 12 Ports Fiber Capacity, 1 pcs. Patch Only Tray Preloaded with 12 SC/PC Adapters, Universal 19"/21" EIA/TIA Rack Compatibility
ALF-UPSM-1U19-PP12/012120	UPSM 1RU Pull-Out Type ODF Module with Cable Management 12 Ports Fiber Capacity, 1 pcs. Patch Only Tray Preloaded with 12 SC/APC Adapters, Universal 19"/21" EIA/TIA Rack Compatibility
ALF-UPSM-1U19-PS12/112114	UPSM 1RU Pull-Out Type ODF Module with Cable Management 12 Ports Fiber Capacity, 1 pcs. Patch&Splice Tray Preloaded with 12 SC/PC Adapters and 12 SC/PC 1.5 meter length white colour Pigtaills that go to the left of the tray, Universal 19"/21" EIA/TIA Rack Compatibility
ALF-UPSM-1U19-PS12/112124	UPSM 1RU Pull-Out Type ODF Module with Cable Management 12 Ports Fiber Capacity, 1 pcs. Patch&Splice Tray Preloaded with 12 SC/APC Adapters and 12 SC/APC 1.5 meter length white colour Pigtaills that go to the left of the tray, Universal 19"/21" EIA/TIA Rack Compatibility
ALF-UPSM-1U19-PP12/022110	UPSM 1RU Pull-Out Type ODF Module with Cable Management 24 Ports Fiber Capacity, 2 pcs. Patch Only Tray Preloaded with 12 SC/PC Adapters, Universal 19"/21" EIA/TIA Rack Compatibility
ALF-UPSM-1U19-PP12/022120	UPSM 1RU Pull-Out Type ODF Module with Cable Management 24 Ports Fiber Capacity, 2 pcs. Patch Only Tray Preloaded with 12 SC/APC Adapters, Universal 19"/21" EIA/TIA Rack Compatibility
ALF-UPSM-1U19-PS12/122114	UPSM 1RU Pull-Out Type ODF Module with Cable Management 24 Ports Fiber Capacity, 2 pcs. Patch&Splice Tray Preloaded with 12 SC/PC Adapters and 12 SC/PC 1.5 meter length white colour Pigtaills that go to the left of the tray, Universal 19"/21" EIA/TIA Rack Compatibility
ALF-UPSM-1U19-PS12/122124	UPSM 1RU Pull-Out Type ODF Module with Cable Management 24 Ports Fiber Capacity, 2 pcs. Patch&Splice Tray Preloaded with 12 SC/APC Adapters and 12 SC/APC 1.5 meter length white colour Pigtaills that go to the left of the tray, Universal 19"/21" EIA/TIA Rack Compatibility
ALF-UPSM-2U19-PP12/042110	UPSM 2RU Pull-Out Type ODF Module with Cable Management 48 Ports Fiber Capacity, 4 pcs. Patch Only Tray Preloaded with 12 SC/PC Adapters, Universal 19"/21" EIA/TIA Rack Compatibility
ALF-UPSM-2U19-PP12/042120	UPSM 2RU Pull-Out Type ODF Module with Cable Management 48 Ports Fiber Capacity, 4 pcs. Patch Only Tray Preloaded with 12 SC/APC Adapters, Universal 19"/21" EIA/TIA Rack Compatibility
ALF-UPSM-2U19-PS12/142114	UPSM 2RU Pull-Out Type ODF Module with Cable Management 48 Ports Fiber Capacity, 4 pcs. Patch&Splice Tray Preloaded with 12 SC/PC Adapters and 12 SC/PC 1.5 meter length white colour Pigtaills that go to the left of the tray, Universal 19"/21" EIA/TIA Rack Compatibility
ALF-UPSM-2U19-PS12/142124	UPSM 2RU Pull-Out Type ODF Module with Cable Management 48 Ports Fiber Capacity, 4 pcs. Patch&Splice Tray Preloaded with 12 SC/APC Adapters and 12 SC/APC 1.5 meter length white colour Pigtaills that go to the left of the tray, Universal 19"/21" EIA/TIA Rack Compatibility
ALF-UPSM-3U19-PP12/062110	UPSM 3RU Pull-Out Type ODF Module with Cable Management 72 Ports Fiber Capacity, 6 pcs. Patch Only Tray Preloaded with 12 SC/PC Adapters, Universal 19"/21" EIA/TIA Rack Compatibility
ALF-UPSM-3U19-PP12/062120	UPSM 3RU Pull-Out Type ODF Module with Cable Management 72 Ports Fiber Capacity, 6 pcs. Patch Only Tray Preloaded with 12 SC/APC Adapters, Universal 19"/21" EIA/TIA Rack Compatibility
ALF-UPSM-3U19-PS12/162114	UPSM 3RU Pull-Out Type ODF Module with Cable Management 72 Ports Fiber Capacity, 6 pcs. Patch&Splice Tray Preloaded with 12 SC/PC Adapters and 12 SC/PC 1.5 meter length white colour Pigtaills that go to the left of the tray, Universal 19"/21" EIA/TIA Rack Compatibility
ALF-UPSM-3U19-PS12/162124	UPSM 3RU Pull-Out Type ODF Module with Cable Management 72 Ports Fiber Capacity, 6 pcs. Patch&Splice Tray Preloaded with 12 SC/APC Adapters and 12 SC/APC 1.5 meter length white colour Pigtaills that go to the left of the tray, Universal 19"/21" EIA/TIA Rack Compatibility
ALF-UPSM-4U19-PP12/082110	UPSM 4RU Pull-Out Type ODF Module with Cable Management 96 Ports Fiber Capacity, 8 pcs. Patch Only Tray Preloaded with 12 SC/PC Adapters, Universal 19"/21" EIA/TIA Rack Compatibility
ALF-UPSM-4U19-PP12/082120	UPSM 4RU Pull-Out Type ODF Module with Cable Management 96 Ports Fiber Capacity, 8 pcs. Patch Only Tray Preloaded with 12 SC/APC Adapters, Universal 19"/21" EIA/TIA Rack Compatibility
ALF-UPSM-4U19-PS12/182114	UPSM 4RU Pull-Out Type ODF Module with Cable Management 96 Ports Fiber Capacity, 8 pcs. Patch&Splice Tray Preloaded with 12 SC/PC Adapters and 12 SC/PC 1.5 meter length white colour Pigtaills that go to the left of the tray, Universal 19"/21" EIA/TIA Rack Compatibility
ALF-UPSM-4U19-PS12/182124	UPSM 4RU Pull-Out Type ODF Module with Cable Management 96 Ports Fiber Capacity, 8 pcs. Patch&Splice Tray Preloaded with 12 SC/APC Adapters and 12 SC/APC 1.5 meter length white colour Pigtaills that go to the left of the tray, Universal 19"/21" EIA/TIA Rack Compatibility