

alfafonet[®]

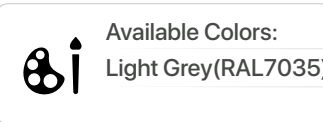
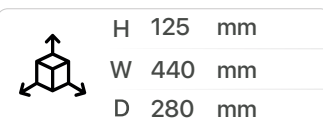
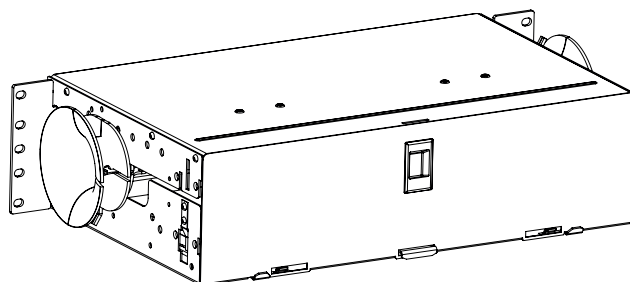
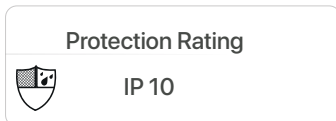
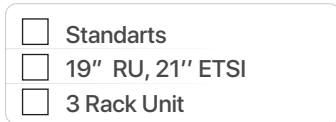
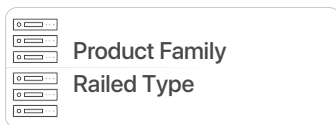
Complete Connectivity Solutions



UPSM 3U

UPSM

UPSM 3U FIBER OPTIC PATCH/SPLICE MODULE



PRODUCT OVERVIEW

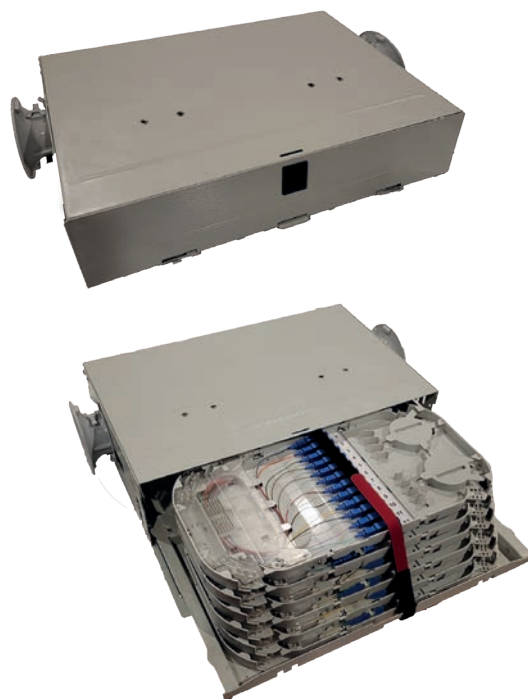
The Universal Patch/Splice Module is mainly used for patching only (patch cords, connectorized breakout cables, intra-facility cables) or for splicing loose tube cables and patching the pigtails to patch cords. Sliding trays are used instead of front patching, pivoting ones when full easy access at both sides of the connection is required. Within the same tray to patch a connector in a different position it is possible with a perfect control of the extra length. Accurate design and compact adapters allow to accommodate 12 termination (24 using SFF connectors) per tray. Easy-removable adapter holders make easy to access to each connection in the shelf. Kits to attach cables at the side or the back of the shelf are available. PLC splitters as well as FBT splitters or other optical passive components can be integrated. Versions preloaded with adapters and pigtails are available.

Features

- › Up to 144 fibres in 3U (with LC Duplex adapters)
- › Accepts loose tube, distribution and pre terminated cables
- › Splice-Splice, Splice-Patch and Patch-Patch Tray Options
- › Sliding lock for to block the tray
- › Pulled-open front pulled-out tray

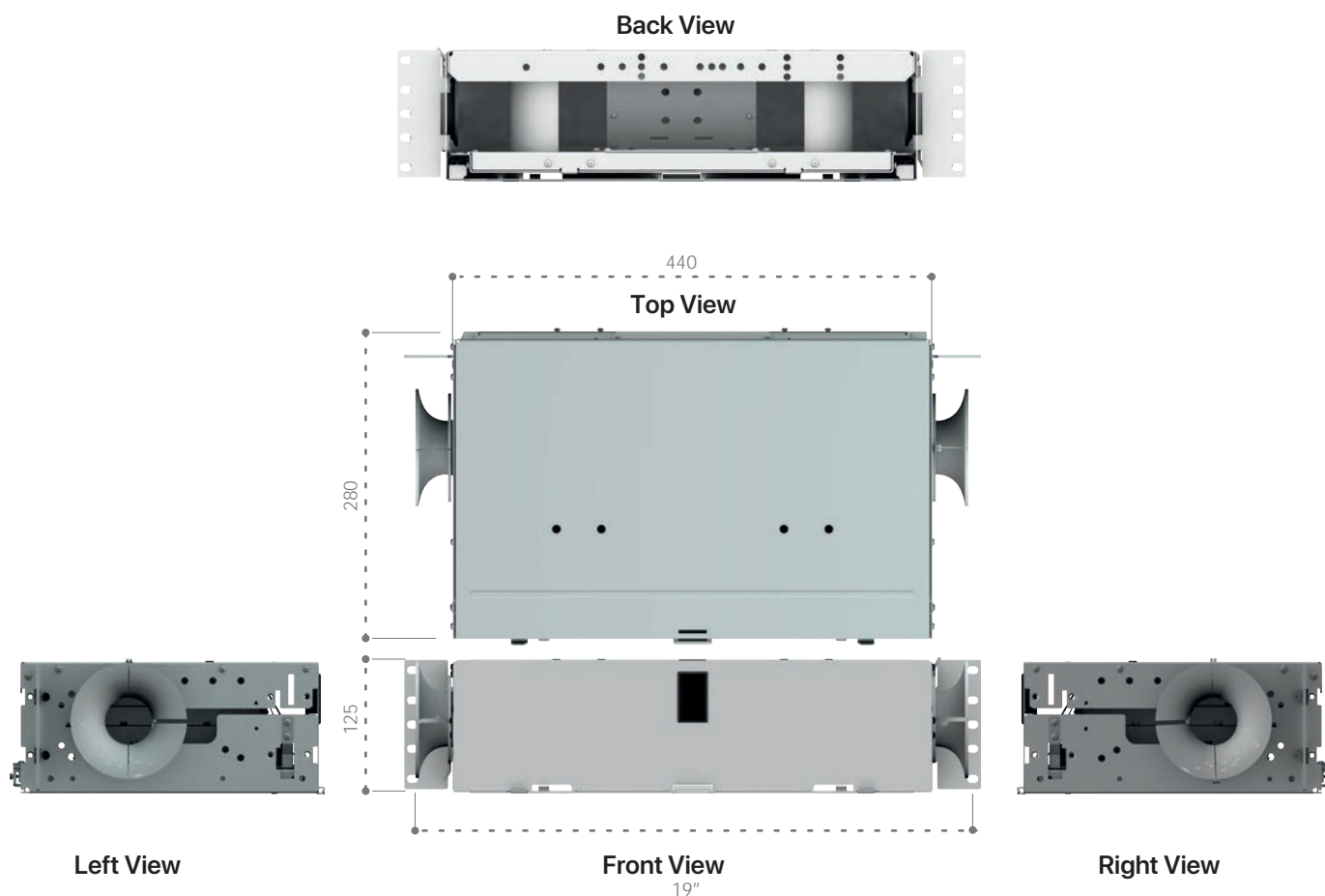
Specifications

- › Cold Rolled Steel
- › Durable electrostatic powder coat finish available in RAL7035
- › Universal 19/21" EIA/TIA rack compatibility
- › Bend controls guide and protect the pigtail cable and ensure controlled cable bending.
- › Front and back side mounting options
- › Standard cable stub location is left/right side
- › Optional cable stub location is rear
- › Removable Front Cover



UPSM 3U FIBER OPTIC PATCH/SPLICE MODULE

Dimensions



Standart Kit Content

- Metal chassis with drawer
- Mounting brackets
- Drawer includes:
 - 2 tray support wedges
 - Velcro to secure the trays
 - Bend control(s) at the patching side
- Splice/patch versions include foam and tie-wraps to fix the cable elements (loose tubes, break-out cable, intra-facility subunits) onto the trays
- Trays (if selected in the name string) which include:
 - Splice protector holder
- Trumpets for guiding pigtails as they exit the shelf
- Identification cards and card holders
- Mounting screws and nuts
- Installation Instructions



UPSM 3U FIBER OPTIC PATCH/SPLICE MODULE

Order Guide



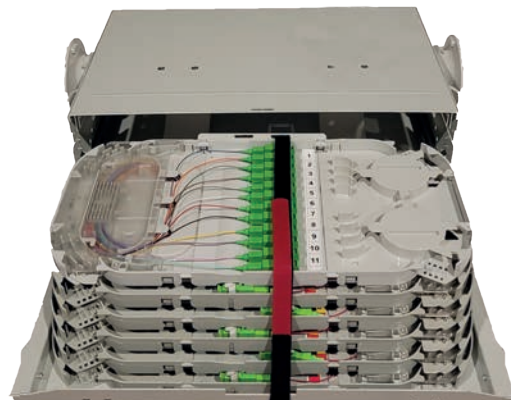
ALF-UPSM-3U19-PP12/062110



ALF-UPSM-3U19-PP12/062120



ALF-UPSM-3U19-PS12/162116



ALF-UPSM-3U19-PS12/162126

PART NUMBER	DESCRIPTION
ALF-UPSM-3U19-PP12/062110	UPSM 3RU Pull-Out Type ODF Module with Cable Management 72 Ports Fiber Capacity, 6 pcs. Patch Only Tray Preloaded with 12 SC/PC Adapters, Universal 19"/21" EIA/TIA Rack Compatibility
ALF-UPSM-3U19-PP12/062120	UPSM 3RU Pull-Out Type ODF Module with Cable Management 72 Ports Fiber Capacity, 6 pcs. Patch Only Tray Preloaded with 12 SC/APC Adapters, Universal 19"/21" EIA/TIA Rack Compatibility
ALF-UPSM-3U19-PS12/162116	UPSM 3RU Pull-Out Type ODF Module with Cable Management 72 Ports Fiber Capacity, 6 pcs. Patch&Splice Tray Preloaded with 12 SC/PC Adapters and 12 SC/PC 1.5 meter length coloured Pigtails that go to the left of the tray, Universal 19"/21" EIA/TIA Rack Compatibility
ALF-UPSM-3U19-PS12/162126	UPSM 3RU Pull-Out Type ODF Module with Cable Management 72 Ports Fiber Capacity, 6 pcs. Patch&Splice Tray Preloaded with 12 SC/APC Adapters and 12 SC/APC 1.5 meter length coloured Pigtails that go to the left of the tray, Universal 19"/21" EIA/TIA Rack Compatibility