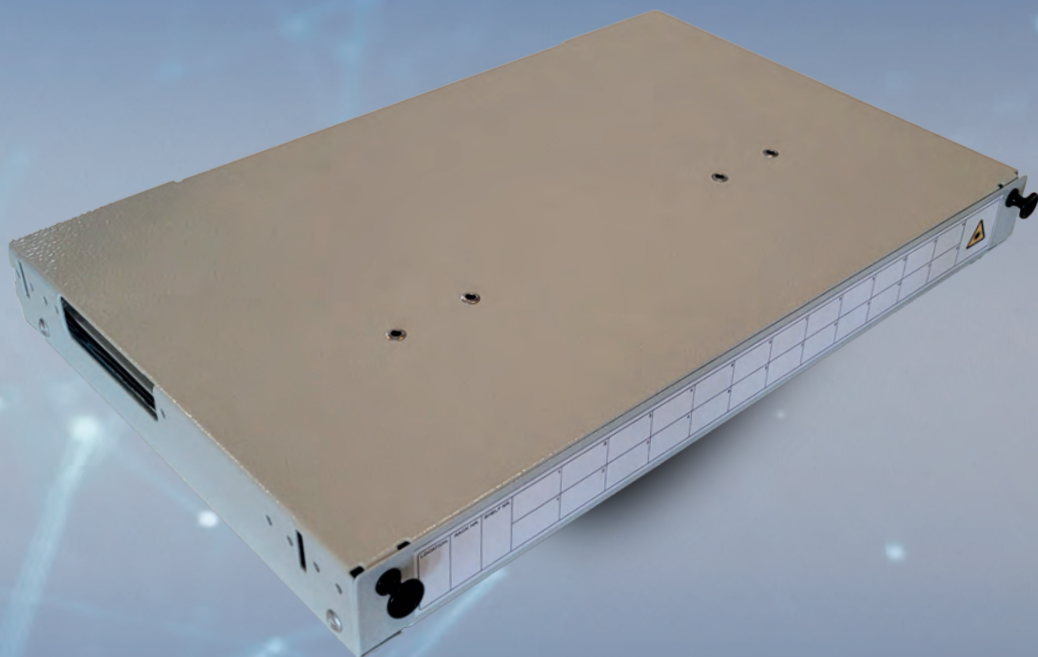


# alfafonet<sup>®</sup>

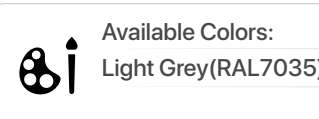
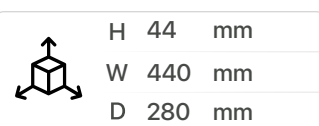
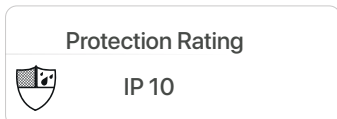
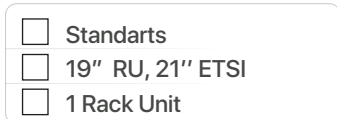
Complete Connectivity Solutions



**UPSM 1U**

**UPSM**

## UPSM 1U FIBER OPTIC PATCH/SPLICE PANEL



### PRODUCT OVERVIEW

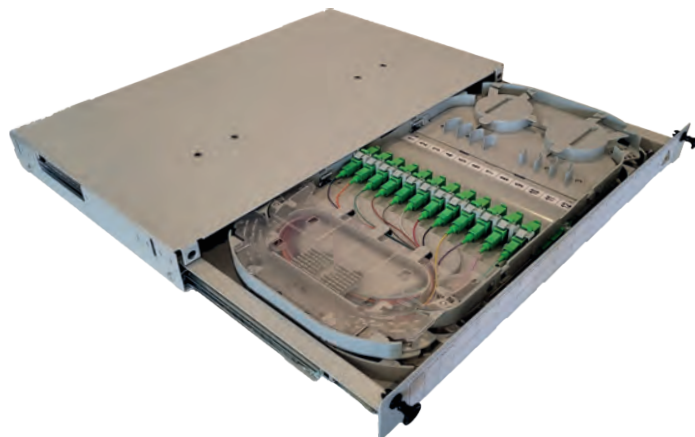
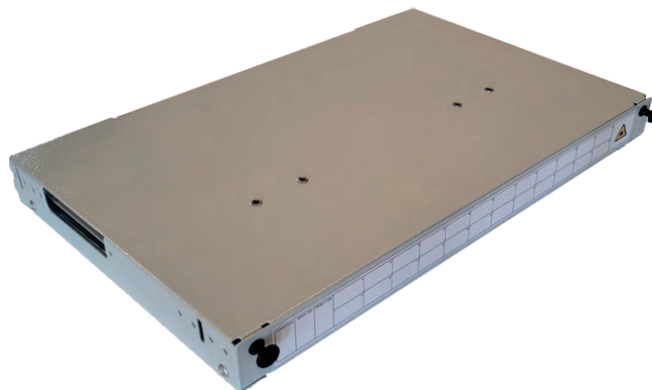
The Universal Patch/Splice Module is mainly used for patching only (patch cords, connectorized breakout cables, intra-facility cables) or for splicing loose tube cables and patching the pigtails to patch cords. Sliding trays are used instead of front patching, pivoting ones when full easy access at both sides of the connection is required. Within the same tray to patch a connector in a different position it is possible with a perfect control of the extra length. Accurate design and compact adapters allow to accommodate 12 termination (24 using SFF connectors) per tray. Easy-removable adapter holders make easy to access to each connection in the shelf. Kits to attach cables at the side or the back of the shelf are available. PLC splitters as well as FBT splitters or other optical passive components can be integrated. Versions preloaded with adapters and pigtails are available.

#### Features

- › Up to 48 fibres in 1U
- › Accepts loose tube, distribution and pre terminated cables
- › Splice-Splice, Splice-Patch and Patch-Patch Tray Options
- › Snap latches for to block the tray
- › Pulled-open front pulled-out tray

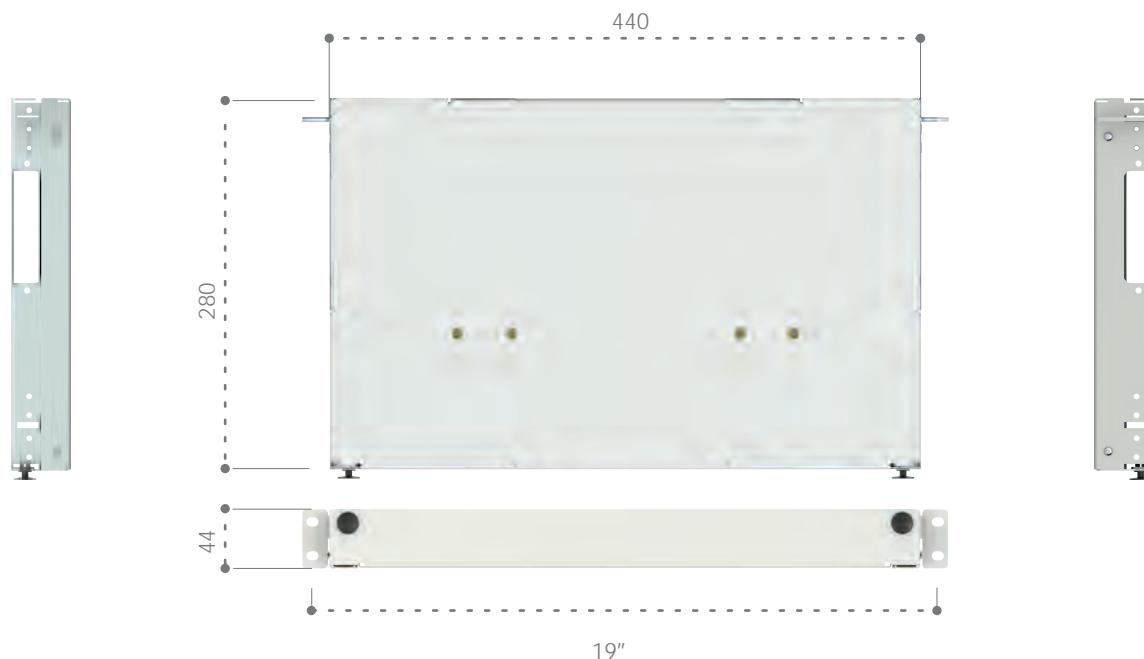
#### Specifications

- › Cold Rolled Steel
- › Durable electrostatic powder coat finish available in RAL7035
- › Universal 19/21" EIA/TIA rack compatibility
- › Bend controls guide and protect the pigtail cable and ensure controlled cable bending.
- › Front and back side mounting options
- › Standard cable stub location is left/right side
- › Optional cable stub location is rear



## UPSM 1U FIBER OPTIC PATCH/SPLICE PANEL

### Dimensions



### Standart Kit Content

- Metal chassis with drawer
- Mounting brackets
- Drawer includes:
  - 2 tray support wedges
  - Velcro to secure the trays
  - Bend control(s) at the patching side
- Splice/patch versions include foam and tie-wraps to fix the cable elements (loose tubes, break-out cable, intra-facility subunits) onto the trays
- Trays (if selected in the name string) which include:
  - Splice protector holder
  - Trumpets (rubber) for guiding pigtails as they exit the shelf
- Identification cards and card holders
- Mounting screws and nuts
- Installation Instructions



**UPSM 1U FIBER OPTIC PATCH/SPLICE PANEL****Dimensions**

ALF-UPSM-1U19-PP12/022110



ALF-UPSM-1U19-PP12/022120



ALF-UPSM-1U19-PS12/122116



ALF-UPSM-1U19-PS12/122126

PART NUMBER	DESCRIPTION
ALF-UPSM-1U19-PP12/022110	UPSM1RU Pull-Out Type ODF Module with Cable Management 24 Ports Fiber Capacity, 2 pcs. Patch Only Tray Preloaded with 12 SC/PC Adapters, Universal 19"/21" EIA/TIA Rack Compatibility
ALF-UPSM-1U19-PP12/022120	UPSM1RU Pull-Out Type ODF Module with Cable Management 24 Ports Fiber Capacity, 2 pcs. Patch Only Tray Preloaded with 12 SC/PC Adapters, Universal 19"/21" EIA/TIA Rack Compatibility
ALF-UPSM-1U19-PS12/122116	UPSM1RU Pull-Out Type ODF Module with Cable Management 24 Ports Fiber Capacity, 2 pcs. Patch&Splice Tray Preloaded with 12 SC/PC Adapters and 12 SC/PC 1.5 meter length coloured Pigtaills that go to the left of the tray, Universal 19"/21" EIA/TIA Rack Compatibility
ALF-UPSM-1U19-PS12/122126	UPSM3RU Pull-Out Type ODF Module with Cable Management 24 Ports Fiber Capacity, 2 pcs. Patch&Splice Tray Preloaded with 12 SC/APC Adapters and 12 SC/APC 1.5 meter length coloured Pigtaills that go to the left of the tray, Universal 19"/21" EIA/TIA Rack Compatibility