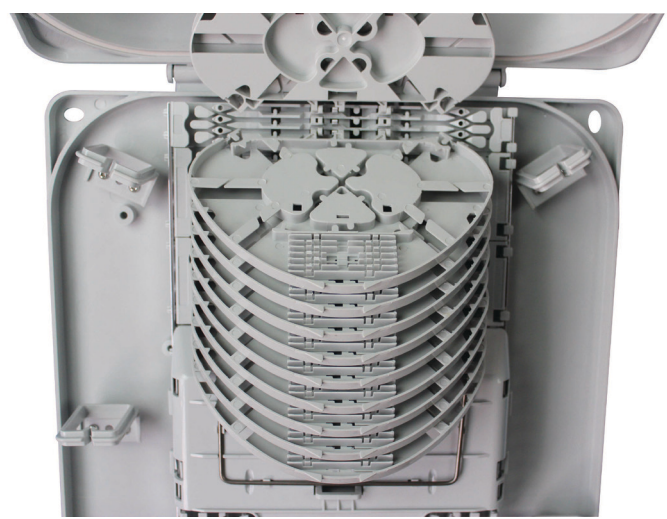
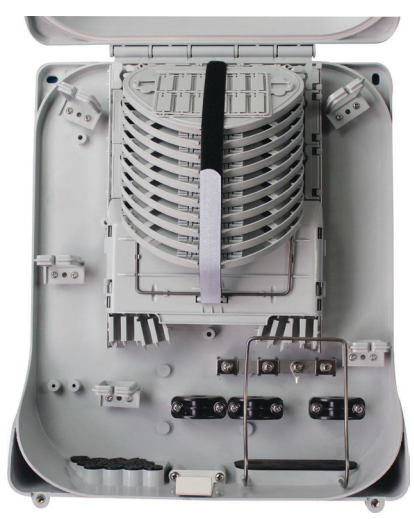
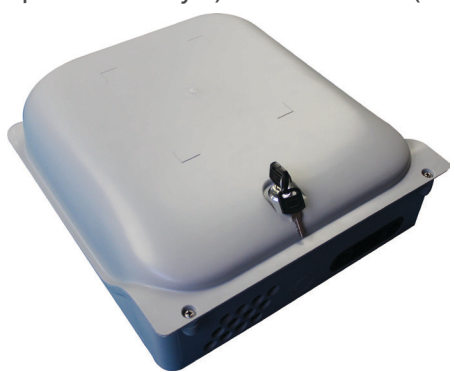


TB-X48B

- IP 65, Outdoor use
- Designed for Wall and Pole mount applications
- Safety lock
- Accepts loose tube, distribution cables
- Bend radius protection
- Rugged and durable construction for long term reliability (UV resistance)
- Resistance to vibration and shock
- Door with secure mechanism
- Can accommodate up to many pieces 1 x 8 or 1 x 16 PLC Splitter
- Up to 48 drop cables
- Design for small and medium volumes of fiber optic cables
- Max. 120 fibers(10 pcs of SE trays) Max. 80 fibers(20 pcs of SC trays)



Specifications

Product Code	Dimensions	Number of entry exit ports	Splice Capacity
ALF-TB-X48B	398x327x118 mm	1 loop cable or 2 cables (max 20 mm) The reserved port (max 18 mm) 48 drop cables	120 Splices(10 pcs of SE trays: 10x12 Splices) 80 Splices(20 pcs of SC trays: 20x4 Splices)