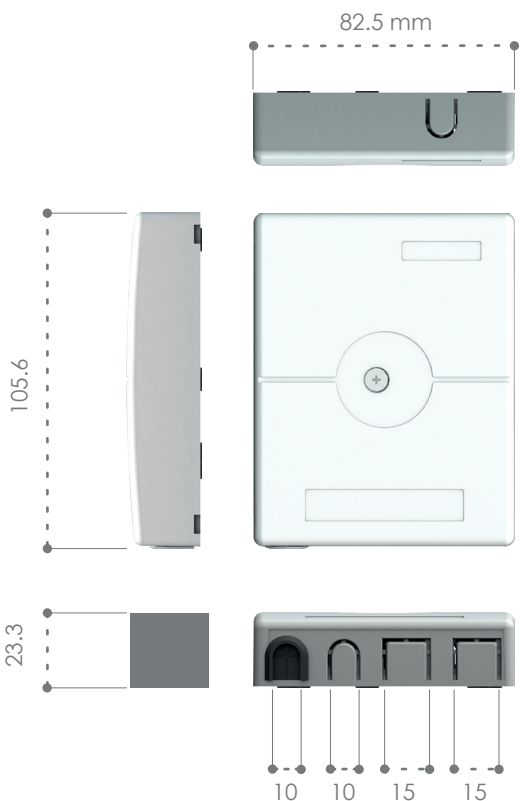


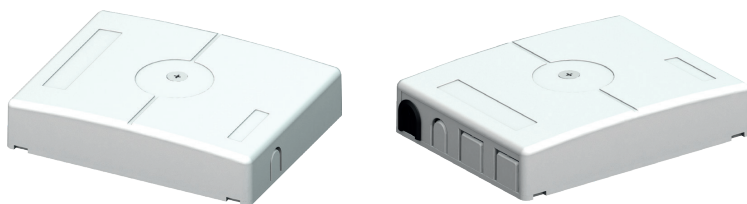
FH 108 OUTLET BOX



Wall outlet FH-108 is a compact fiber terminal for use at the final fiber termination point in the customer premises. The FH-108 provides mechanical protection and managed fiber control in an attractive format suitable for use inside customer premises. A variety of possible fiber termination techniques are accommodated.

Features

- Splicing to factory terminated pigtails
- Positive fiber management
- Direct termination with field installable connectors
- Attractive design for indoor use
- Can hold up to 4 mechanical splices and fusion splice protectors and mechanical SC connectors can be integrated as well
- Splice cable to cable
- Compatible with 2 SC Simplex adaptors
- Multiple cable entry points (cable diameter ≤ 6mm)
- Can be wall mounted and mounted on wall boxes with fixation points of 60mm



Specifications

Product Code	Dimensions HxWxD(mm)	Cable Ports	Fiber Capacity	Adapter Capacity
ALF-FH-108	105.6x82.5x23.3	2 Cable Ports (max. 6 mm dia.)	4 Splice	2 SC Simplex or 2 LC Duplex Adapters