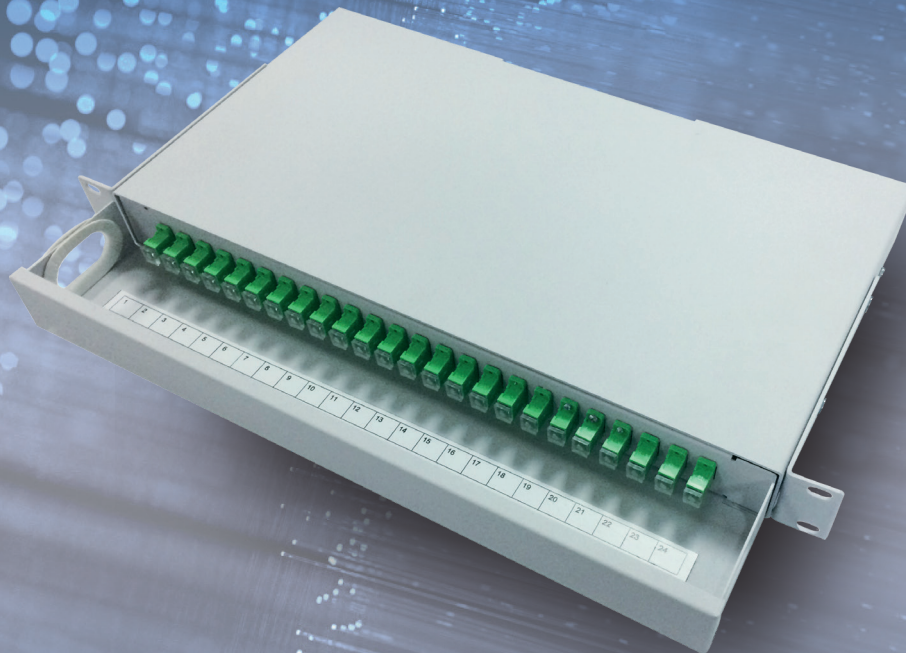


alfafonet[®]

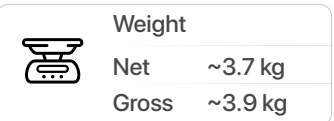
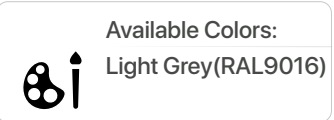
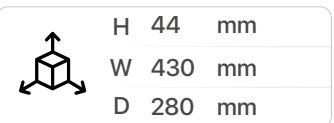
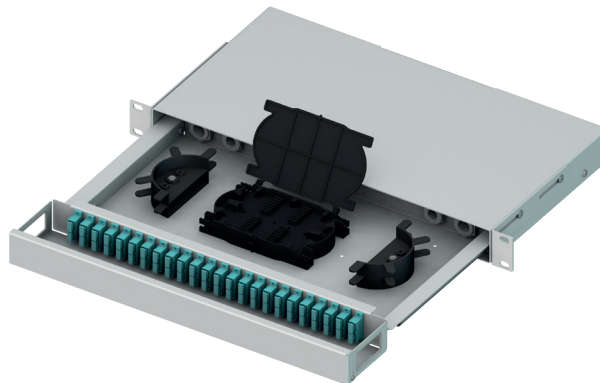
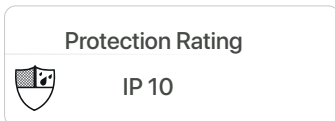
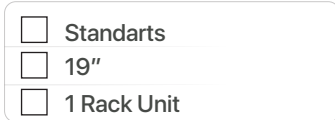
Complete Connectivity Solutions



TRKST RAILED 1U

FIBER OPTIC PATCH PANELS
TRKST Railed 1U

TRKST RAILED 1U



PRODUCT OVERVIEW

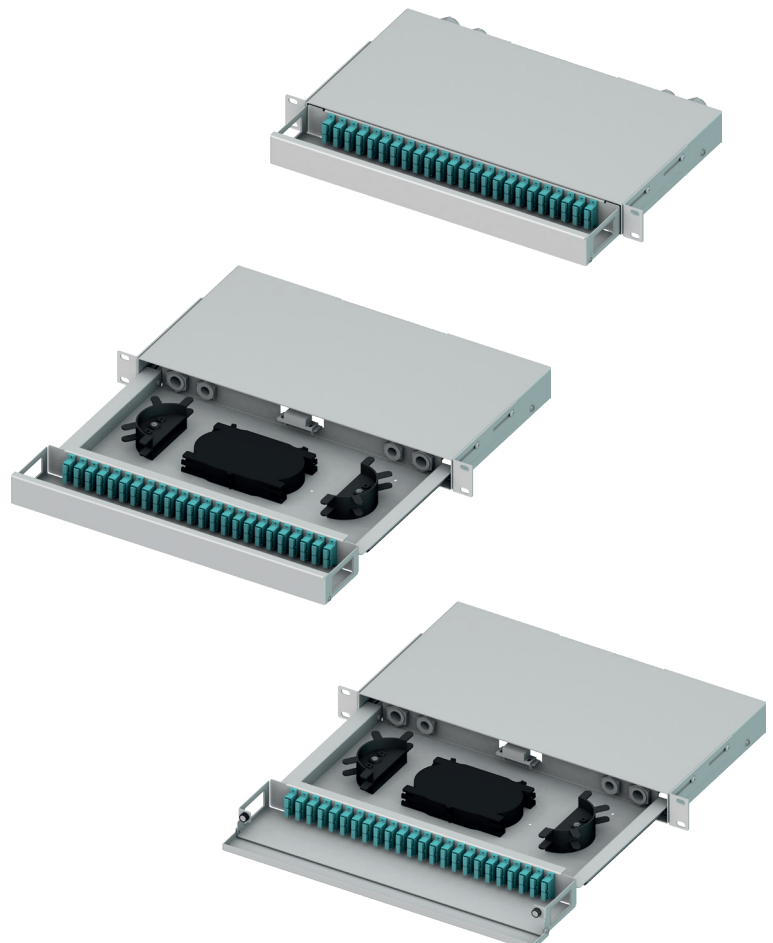
TRKST Railed 1RU Fiber Optic Patch/Splice Panel is designed for use as a rack mount interconnect point where termination and connectivity of up to 48 fibers is desired. This solution allows for easy access to the front patch cords as well as the splice trays and pigtails after being pulled out. Mounted on telescopic rails to ensure the tray slides in and out with a smooth action. Standard panels are available empty for complete field configuration, half-loaded with adaptor plates for field termination and cable assembly installation, or stubbed with a factory-installed cable assembly of a user specified length. The panel also offers up to 4 standard cable entry points for, loose tube, tight buffer, preterminated and steel tape armoured cable. Each panel has integrated strength member.

Features

- Accepts loose tube, distribution and pre terminated cables
- Different adaptor plate options
- Magnetic lock for fixing the tray
- Pulled-open front pulled-out tray
- Optional splice tray kit for on site conversion to patch and splice panel

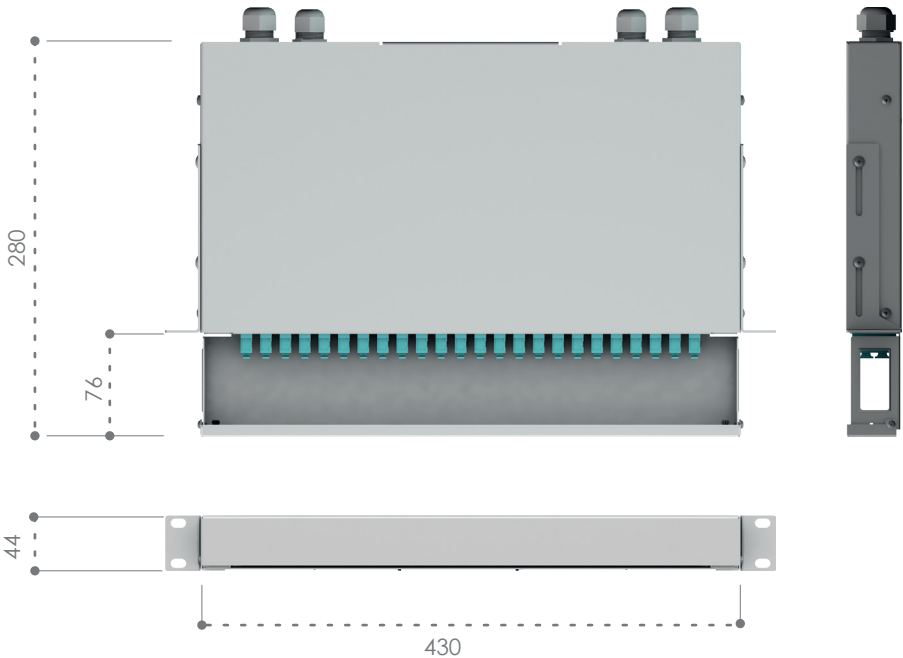
Specifications

- Cold Rolled Steel
- Durable textured powder coat finish available in RAL9016
- Universal 19/21" EIA/TIA rack compatibility
- Front cable manager for patch cords
- Standard cable stub location is rear



TRKST RAILED 1U

Dimensions



Exploded View

