

alfafonet[®]

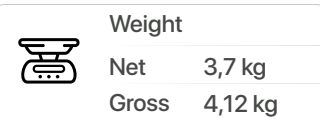
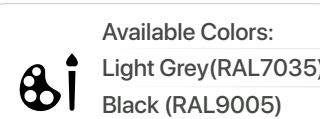
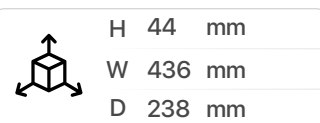
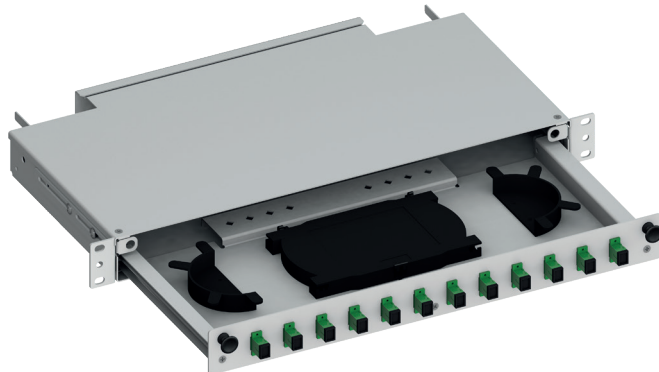
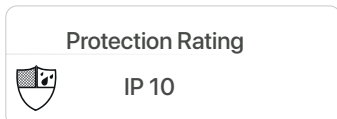
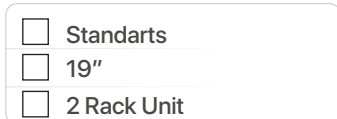
Complete Connectivity Solutions



RAILSLIDE 1RU PATCH / SPLICE PANEL

FIBER OPTIC PATCH PANELS
Railslide

RAILSLIDE 1RU FIBER OPTIC PATCH/SPLICE PANEL



PRODUCT OVERVIEW

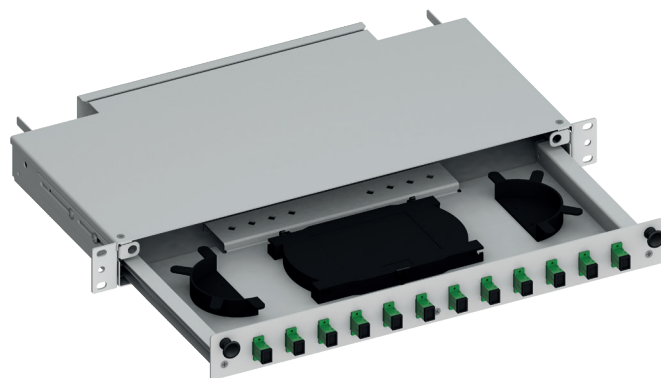
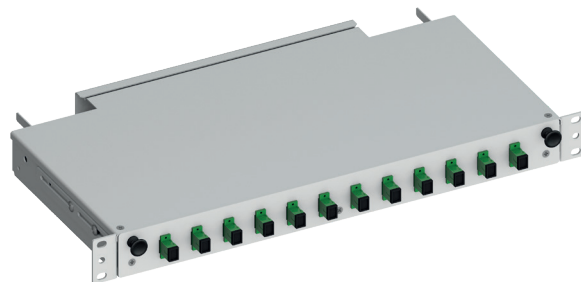
The RailSlide Fiber Termination Patch/Splice Panel is designed for use as a rack mount interconnect point where termination and connectivity of up to 48 and 96 fibers are desired. This solution allows for easy access to the front patch cords as well as the splice trays and pigtails after being pulled out. Mounted on telescopic runners to ensure the tray slides in and out with a smooth action. Standard panels are available empty for complete field configuration, half-loaded with adaptor plates for field termination and cable assembly installation, or stubbed with a factory-installed cable assembly of a user specified length. The panel also offers multiple cable entry solutions, up to 2 or 4 standard cable entry points for, loose tube, tight buffer, preterminated and steel tape armoured cable. Each panel has integrated strength member tie positions.

Features

- › Up to 48 fibres in 1RU
- › Accepts loose tube, distribution and pre terminated cables
- › Changeable adaptor plates
- › Snap Latches or Quarter Turn lock for fixing the tray
- › Pulled-open front pulled-out tray
- › Optional splice tray kit for on site conversion to patch and splice panel

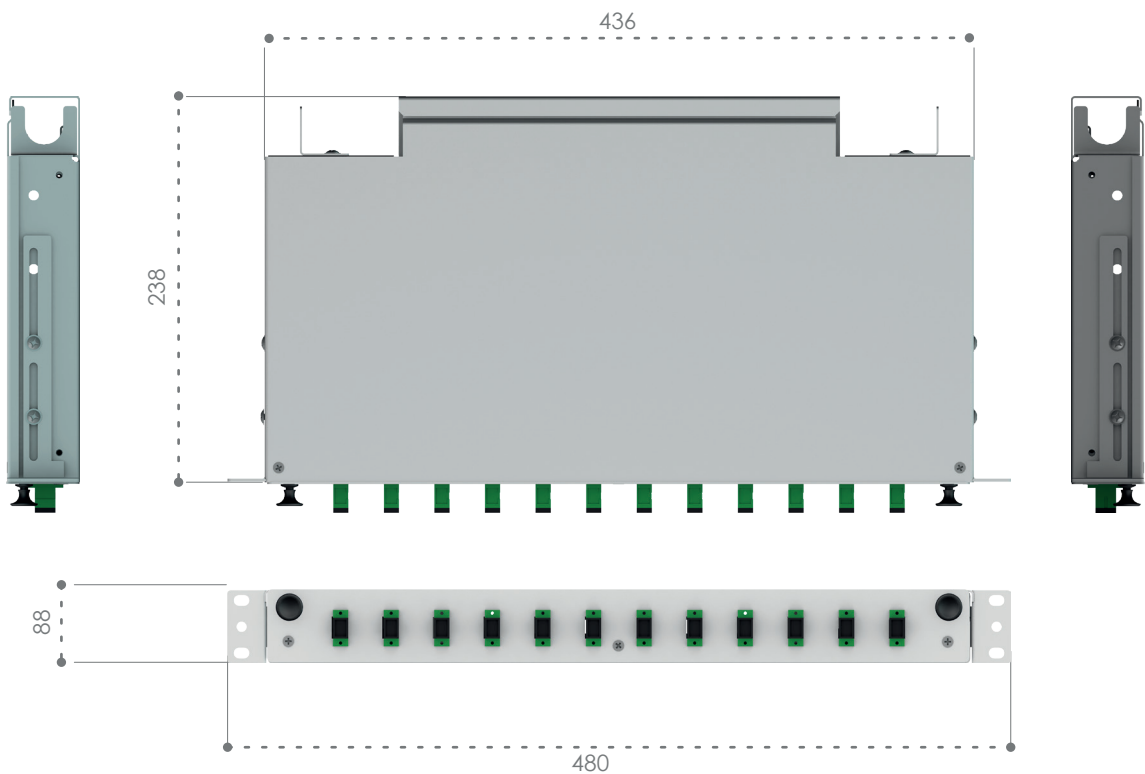
Specifications

- › Cold Rolled Steel
- › Durable textured powder coat finish available in black or white
- › Universal 19/21" EIA/TIA rack compatibility
- › Front and back side mounting options
- › Standard cable stub location is left/right side

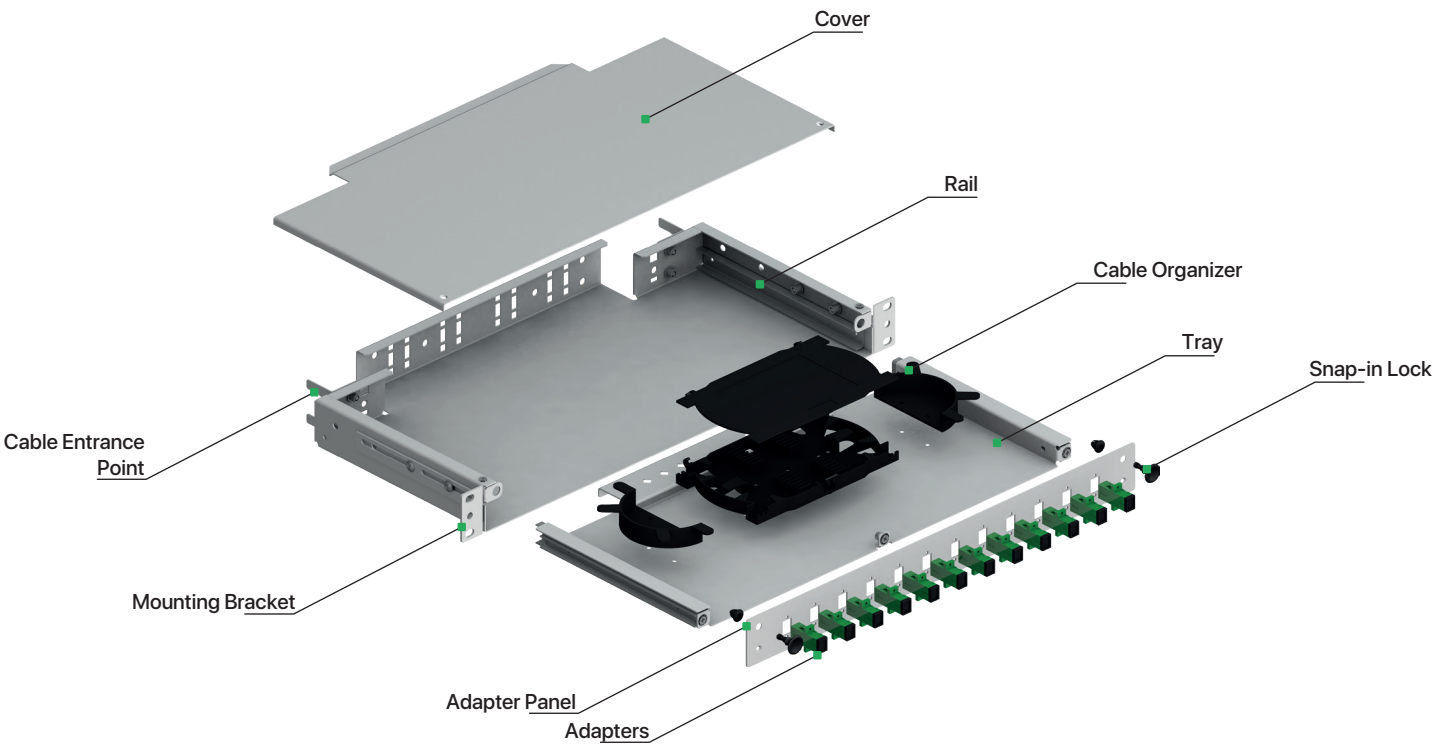


RAILSLIDE 1RU FIBER OPTIC PATCH/SPLICE PANEL

Dimensions



Exploded View



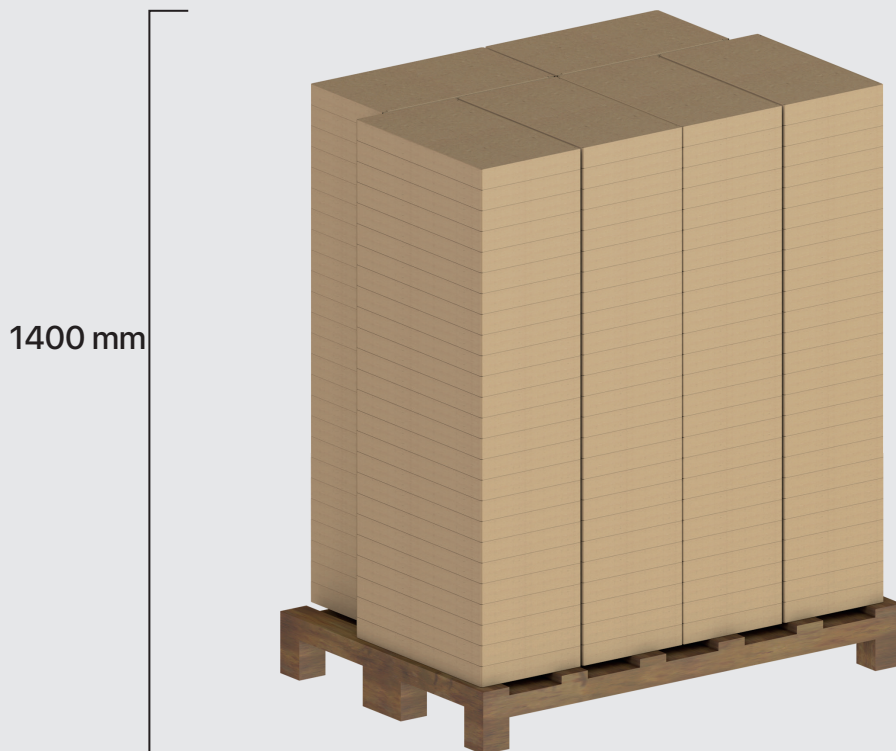
RAILSLIDE 1RU FIBER OPTIC PATCH/SPLICE PANEL

Packaging Details



Railslide 1RU Fiber Optic Patch/Splice Panel
Outer Box Dimensions

495x285x50 mm
Box Weight: ~ 4,12 kg



1 EUR Pallet includes;
350 Railslide 1RU Fiber
Optic Patch/Splice Panel.

EUR Pallet Weight: ~618 kg

EUR pallet
1200x800 mm