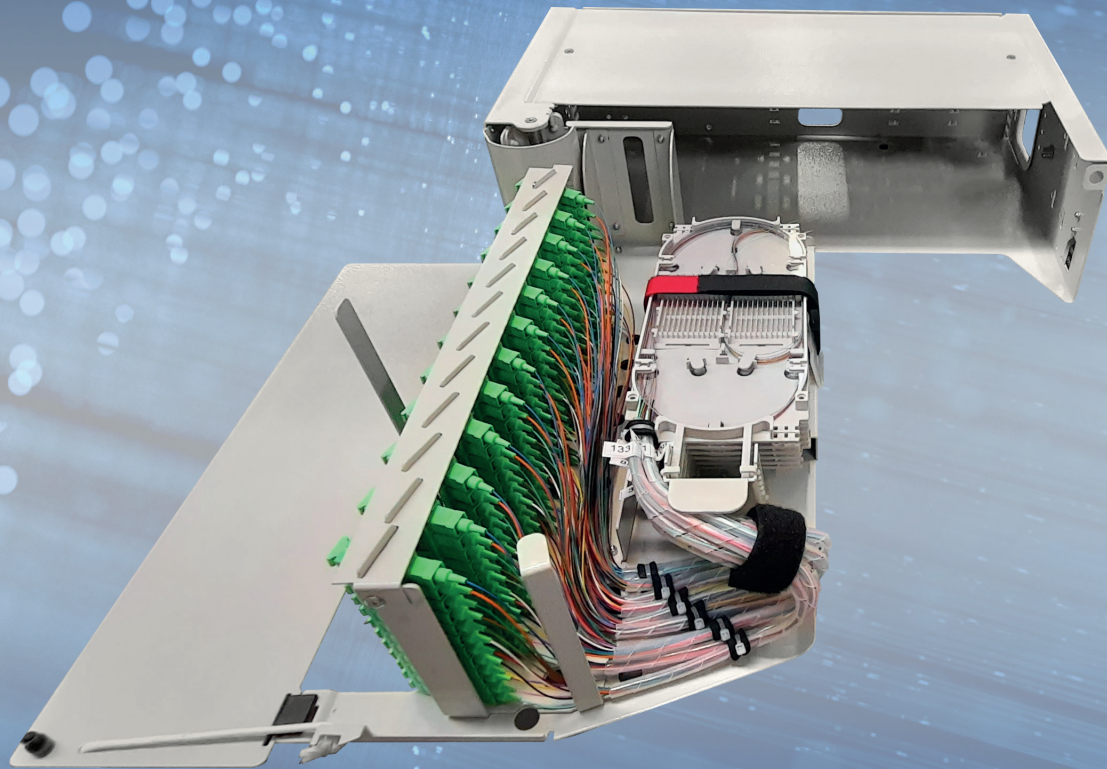


# alfafonet<sup>®</sup>

Complete Connectivity Solutions




## OFSM 3U FIBER OPTIC PATCH/SPLICE PANEL

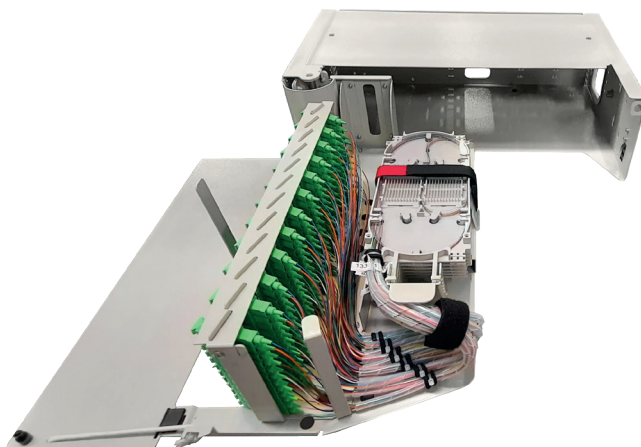
**FIBER OPTIC PATCH PANELS  
OFSM**


## OFSM 3RU PATCH/SPLICE PANEL


	Product Family
	PivotSystem


<input type="checkbox"/>	Standarts
<input type="checkbox"/>	21" & 19"
<input type="checkbox"/>	3 Rack Unit

Protection Rating
 IP 10



	H 132 mm
	W 434 mm
	D 280 mm

Available Colors:
 Light Grey(RAL7035)

Weight
 Net 8,0 kg
Gross 9,5 kg

### PRODUCT OVERVIEW

The OFSM 3U is designed as a dedicated for Central offices, FTTH and Local network applications. This shelf provides high-density patching and splicing. Functional and Compact design gives an advantages for cable assembly, cable fixing and management.

Wide cable entry holes makes wide range to use for different cables and this shelf has side and rear cable entry holes.

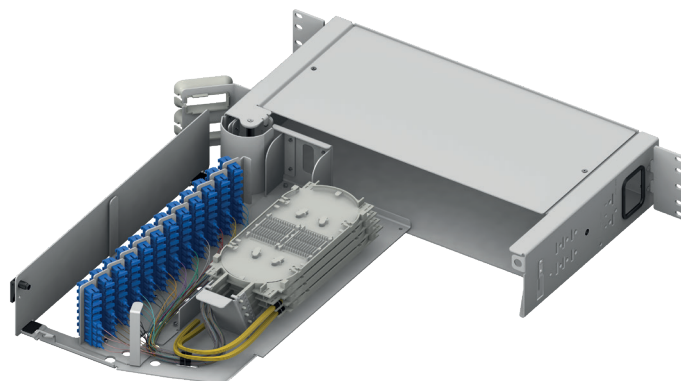
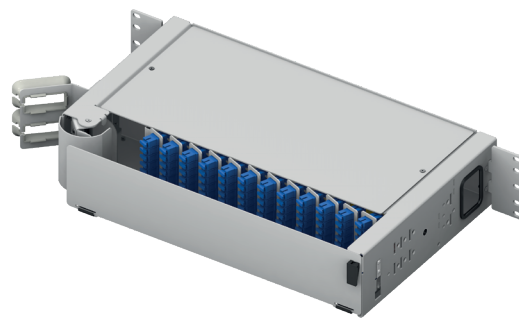
Shelves are available empty for complete field configuration, half-loaded with adaptors for field termination and cable assembly installation, or stubbed with a factory-installed cable assembly of a user specified length.

#### Features

- › Fits comfortably into interconnect, cross-connect, customer premise, and co-location environments
- › Most common connector styles and types available
- › Compatible with industry standard equipment frames
- › Modular design
- › Available to order accordingg to direction of tray opening
- › Available to use with different splice trays option
- › Swing-open front swing-out tray
- › Optional splice tray kit for on site conversion to patch and splice panel

#### Specifications

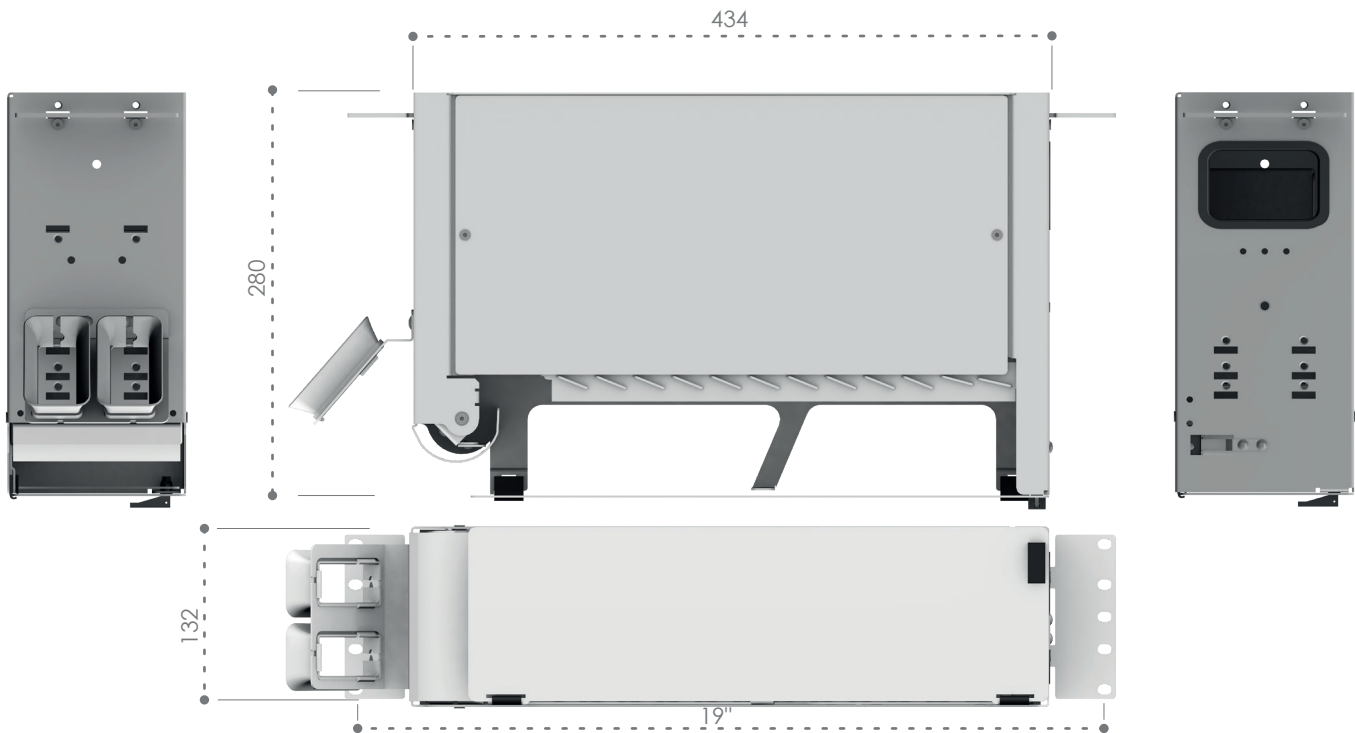
- › Cold rolled steel Construction
- › Durable textured powder coat finish available in Light grey (RAL7035)
- › Universal 19/21" EIA/TIA rack compatibility
- › Standard density: up to 144 fiber,
- › Front and back side mounting
- › Standard cable stub location is left or right side
- › Optional cable stub location s is rear



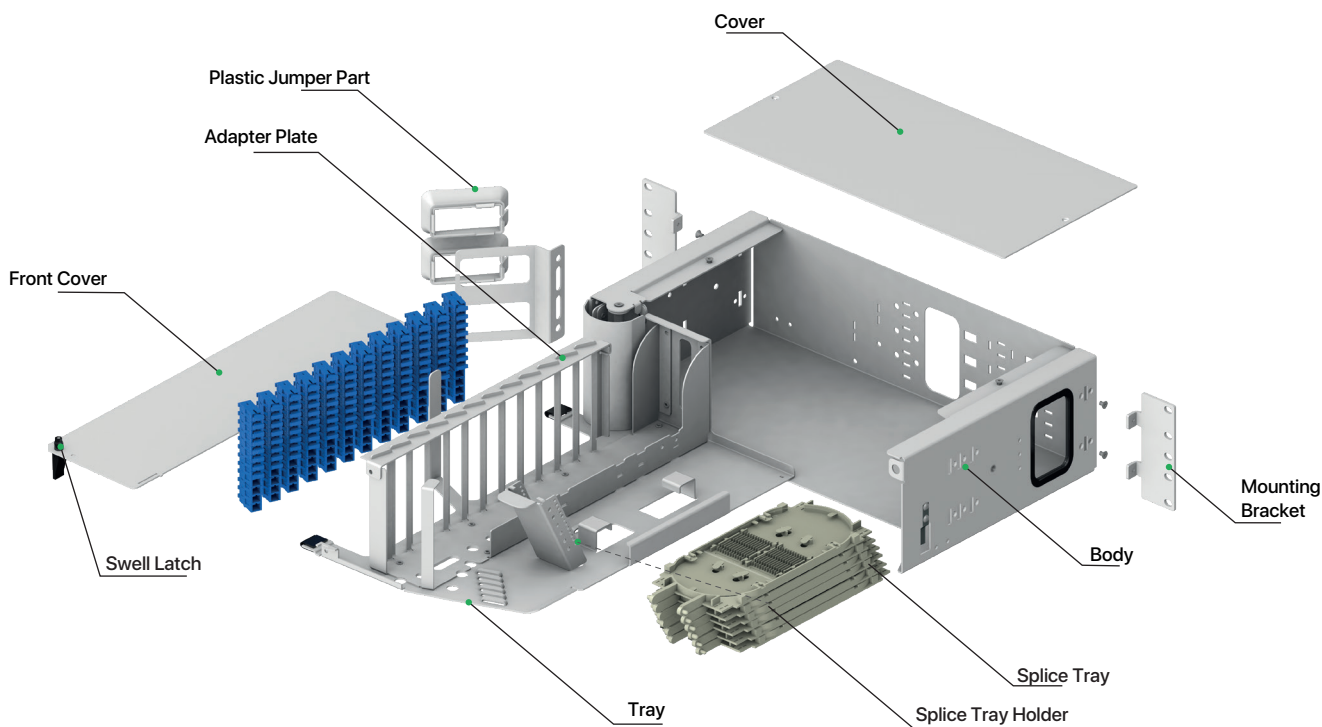


**OFSM 3RU PATCH/SPLICE PANEL**

**Dimensions**

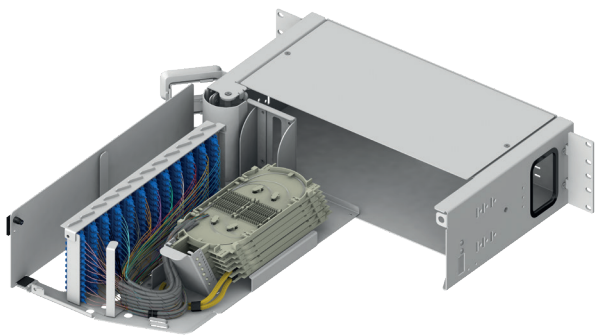


**Exploded View**



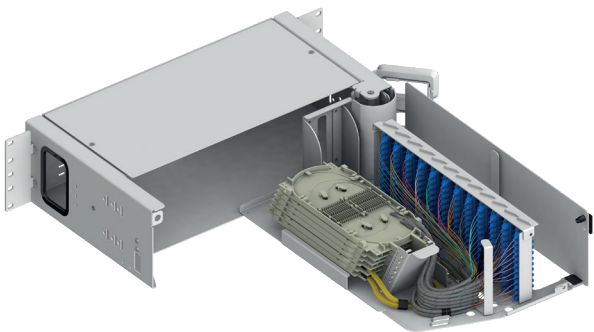
OFSM 3RU PATCH/SPLICE PANEL

Ordering Options



ALF-OFSM-HD-3U19-SPL

High Density Optical Fiber  
Patching&Splicing Module  
3RU Version Splice&Patch Type  
Patchcord Leave from the Module Front Left



ALF-OFSM-HD-3U19-SPR

High Density Optical Fiber  
Patching&Splicing Module  
3RU Version Splice&Patch Type  
Patchcord Leave from the Module Front Right

Ordering Guide

Product Code-CC*	OFSM 3RU Fibre Optic Shelf - Body with front plate, Colour: Light Grey-RAL7035, (1pcs. Allen Key, 2pcs. 21" Bracket, 2pcs. 19"bracket, 6pcs. 3,5mmX150 Cable Ties, 2pcs. 20 cm spiral hoses, Jumper kit) Define module option (product code) below.
------------------	--

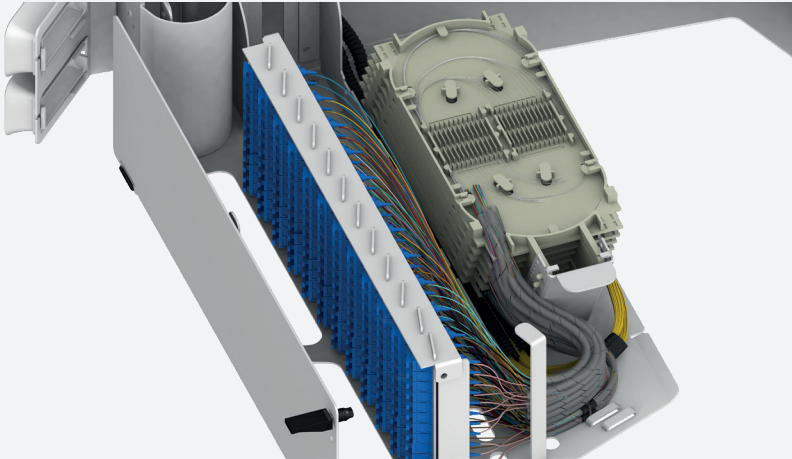
101033.SP - CC*	Patchcord Leave from the Module Front Left
101013.SP - CC*	Patchcord Leave from the Module Front Right

\*CC=LG for Light Grey RAL 7035 for customers to define while ordering.



## OFSM 3RU PATCH/SPLICE PANEL

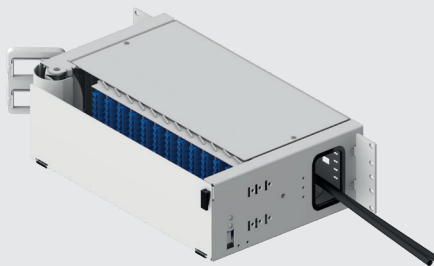
### Key Features



#### ✓ Cable Routing

Smooth cable routing inside cause of the adapters positioning

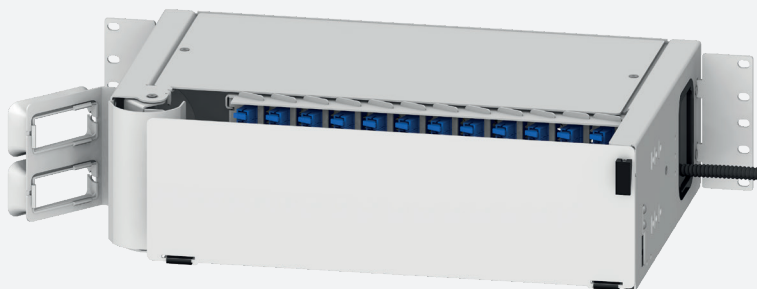
#### ✓ Adjustable Mounting Brackets and Rear Assembly



Rear mounting assembly option

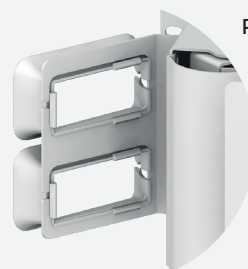


Adjustable depth in rack cause of Mounting brackets positioning



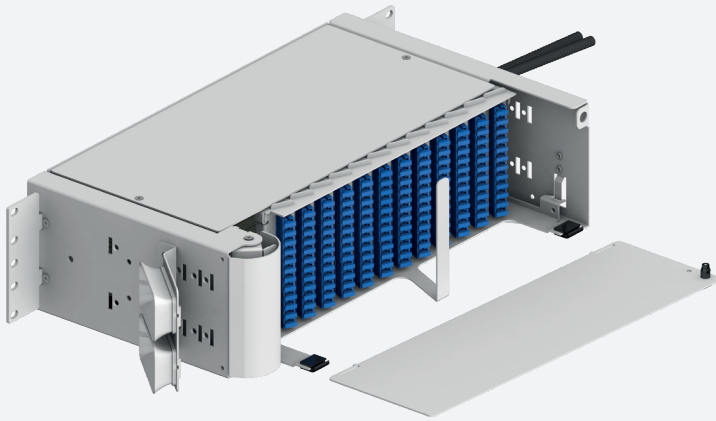
#### ✓ Front Cable Organizer

Plastic jumper part organizes front cable entries.



## OFSM 3RU PATCH/SPLICE PANEL

### Key Features

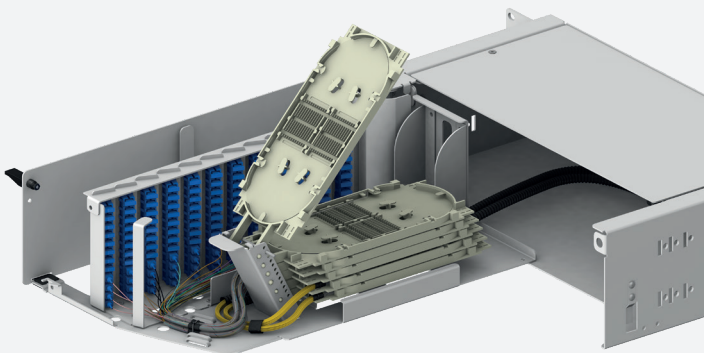


✓ **Removable Front Cover**



✓ **Mounting Options**

19" or 21" Mounting bracket option

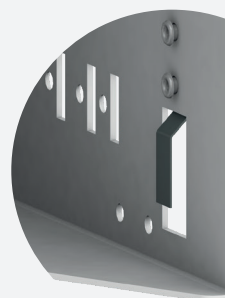
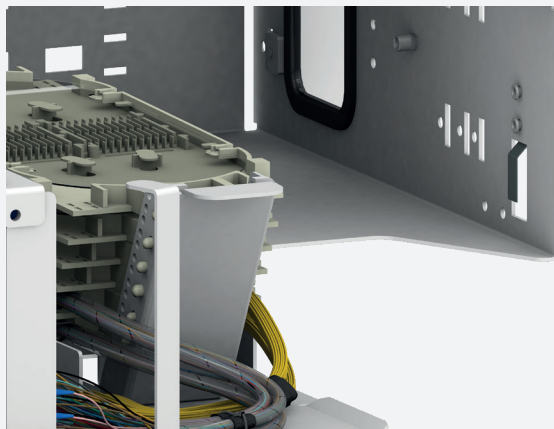


✓ **Splice Tray Holder**

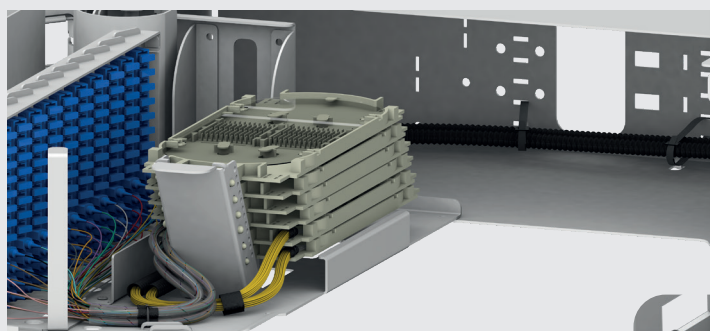
Splice trays can be fixed by inserting screwdriver or anything similar to that, between them.

## OFSM 3RU PATCH/SPLICE PANEL

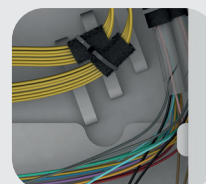
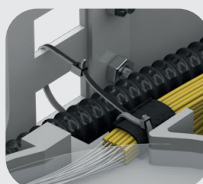
### Key Features



✓ Tray Lock



✓ Cable Fixing Inside





**OFSM 3RU PATCH/SPLICE PANEL**

Adapter Series



LC Duplex









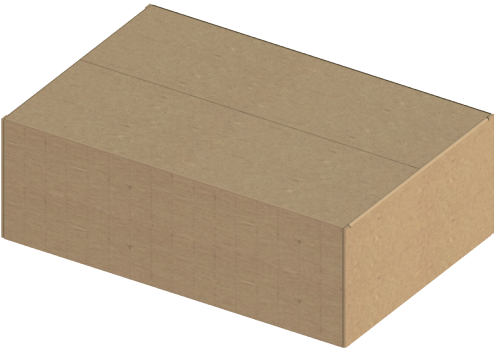
SC Simplex

# OFSM 3RU PATCH/SPLICE PANEL

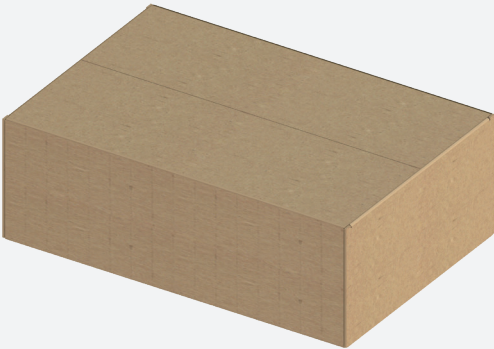
## Packaging Details

### Standart Accesories (Set)

	Jumper Kit		Tire Wrap 3,5x150 Tire Wrap 2,5x150
	2,5 Allen Key		Velcro Bant (One-sided) 50mm 17 cm
	M6 Cage nut Set: Part Number : ST-007 (Black) ST-006 (Inox White) ST-003 (White)		Protection Sleeve 60mm



455x305x50 mm



1 Box includes  
1 OFSM 3RU Fiber Optic Patch Panel.



1390mm

Pallet Weight ~380 kg

1 EUR Pallet includes;  
40 OFSM 3RU Fiber Optic Patch Panel.

EUR pallet  
1200x800 mm