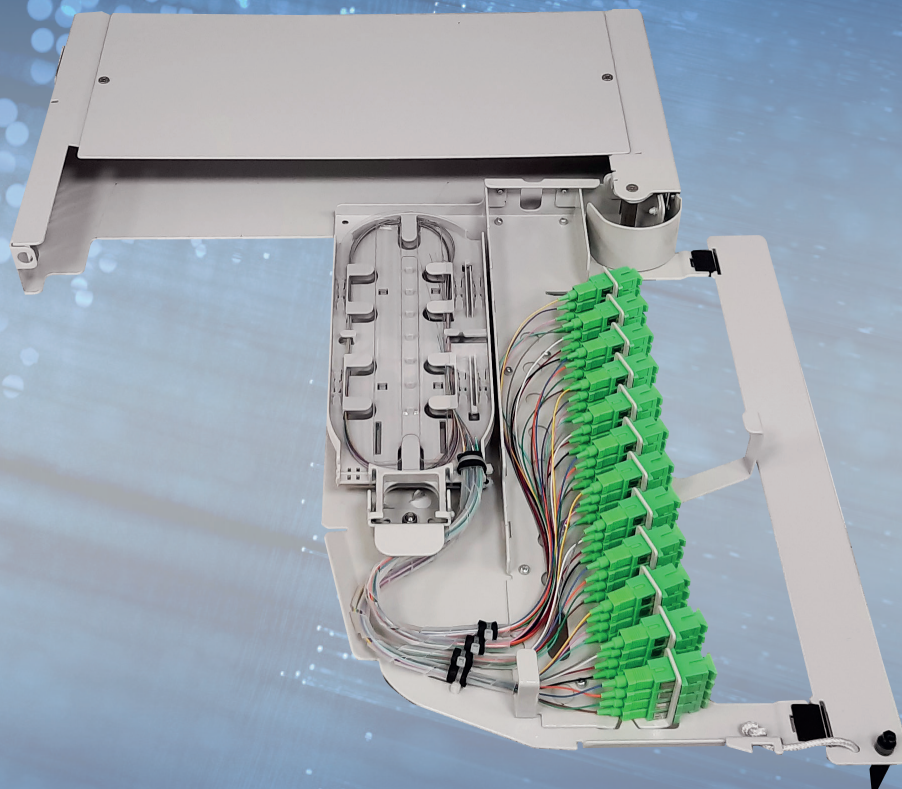


alfafonet[®]

Complete Connectivity Solutions



OFSM 1U FIBER OPTIC PATCH/SPLICE PANEL

**FIBER OPTIC PATCH PANELS
OFSM**

OFSM 1RU PATCH/SPLICE PANEL

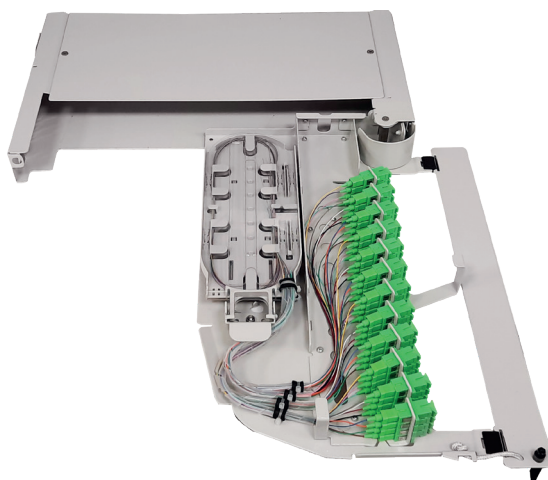
Product Family
PivotSystem



Standards
19"
1 Rack Unit



Protection Rating
IP 10



H 44 mm
W 440 mm
D 242 mm



Available Colors:
Light Grey(RAL7035)



Weight
Net 5,5 kg
Gross 6,25 kg

PRODUCT OVERVIEW

The OFSM 1U is designed as a dedicated for Central offices, FTTH and Local network applications. This shelf provides high-density patching and splicing. Functional and Compact design gives an advantages for cable assembly, cable fixing and management.

Wide cable entry holes makes wide range to use for different cables and this shelf has side and rear cable entry holes.

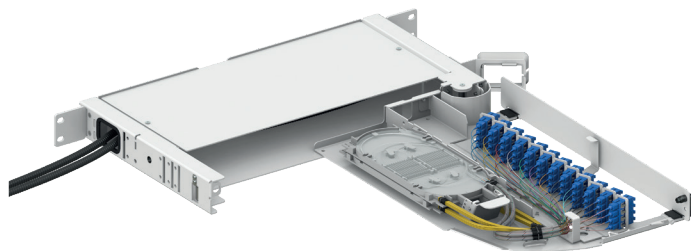
Shelves are available empty for complete field configuration, half-loaded with adaptors for field termination and cable assembly installation, or stubbed with a factory-installed cable assembly of a user specified length.

Features

- › Fits comfortably into interconnect, cross-connect, customer premise, and co-location environments
- › Most common connector styles and types available
- › Compatible with industry standard equipment frames
- › Modular design
- › Available to order accordingg to direction of tray opening
- › Available to use with different splice trays option
- › Swing-open front swing-out tray
- › Optional splice tray kit for on site conversion to patch and splice panel

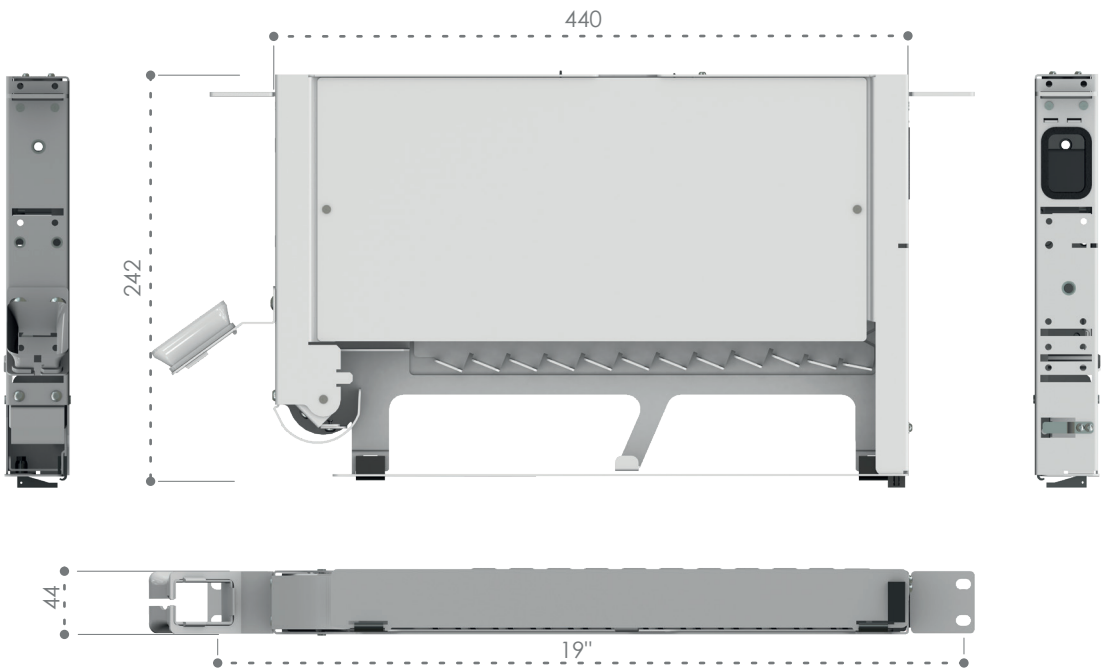
**Specifications**

- › Cold rolled steel Construction
- › Durable textured powder coat finish available in Light grey (RAL7035)
- › Universal 19/21" EIA/TIA rack compatibility
- › Standard density: up to 48 fiber,
- › Front and back side mounting
- › Standard cable stub location is left or right side
- › Optional cable stub location s is rear

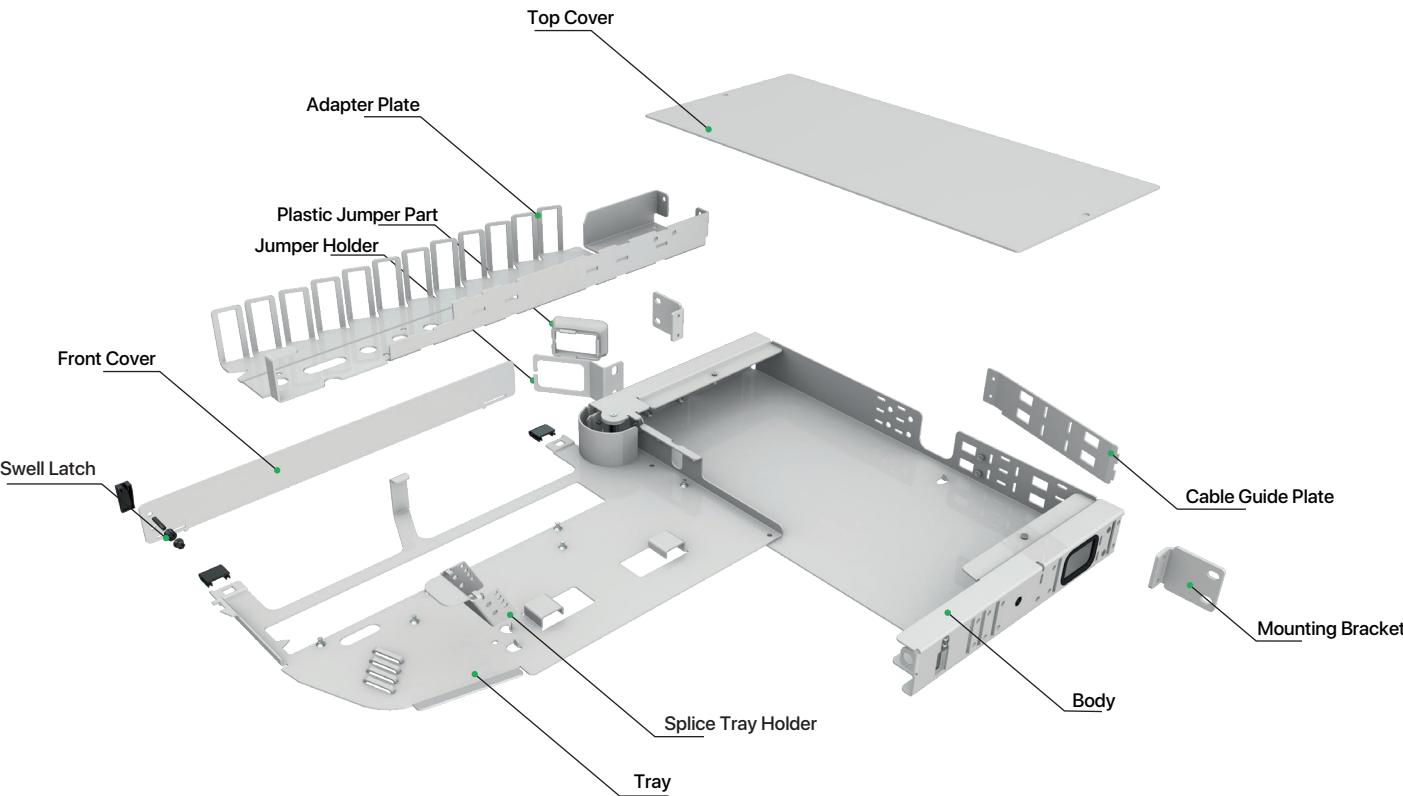


OFSM 1RU PATCH/SPLICE PANEL

Dimensions

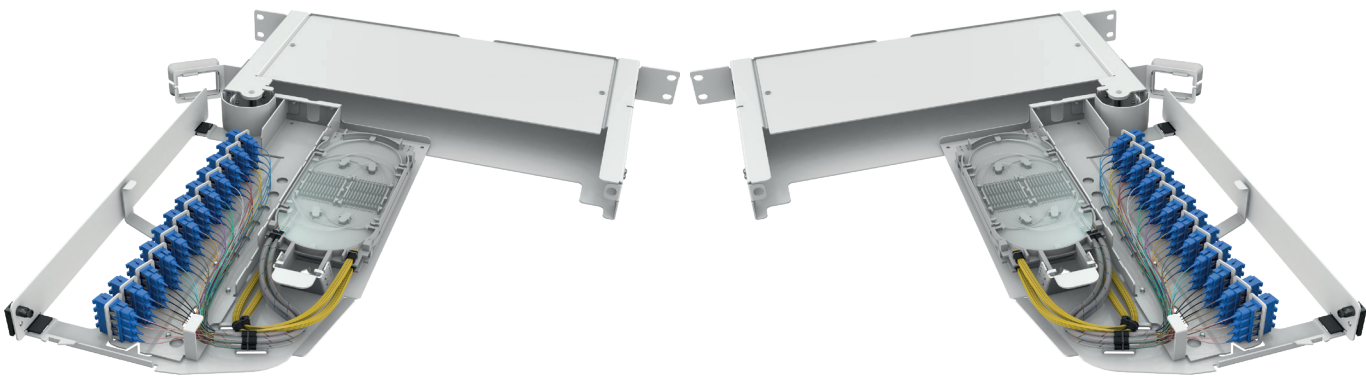


Exploded View



OFSM 1RU PATCH/SPLICE PANEL

Ordering Options



ALF-OFSM-HD-1U19-SPL
 High Density Optical Fiber
 Patching&Splicing Module
 1RU Version Splice&Patch Type
 Patchcord Leave from the Module Front Left
101031

ALF-OFSM-HD-1U19-SPR
 High Density Optical Fiber
 Patching&Splicing Module
 1RU Version Splice&Patch Type
 Patchcord Leave from the Module Front Right
101011

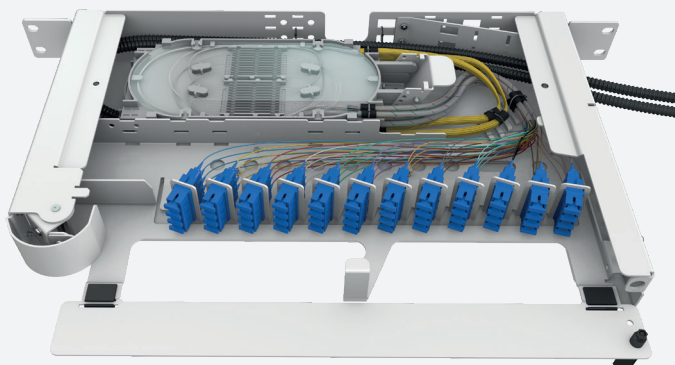
Ordering Guide

Product Code-CC*	OFSM 1RU Fibre Optic Shelf - Body with front plate, Colour: Light Grey-RAL7035, (1pcs. Allen Key, 2pcs. 21" Bracket, 2pcs. 19"bracket, 6pcs. 3,5mmX150 Cable Ties, 2pcs. 20 cm spiral hoses, Jumper kit) Define module option (product code) below.
101031.SP - CC*	Patchcord Leave from the Module Front Left
101011.SP - CC*	Patchcord Leave from the Module Front Right

*CC=LG for Light Grey RAL 7035 for customers to define while ordering.

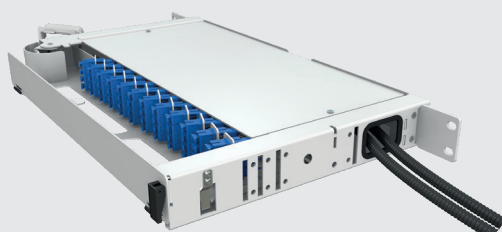
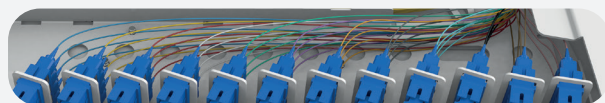
OFSM 1RU PATCH/SPLICE PANEL

Key Features

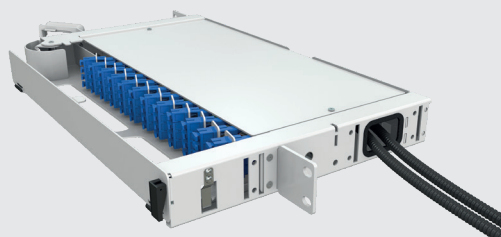


✓ Comfortable Cable Routing

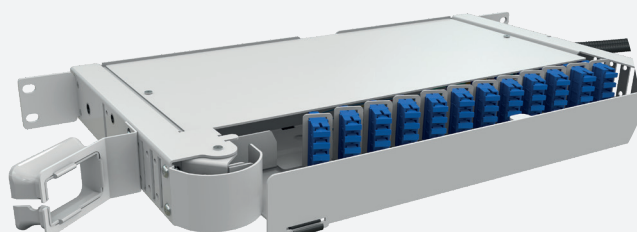
Smooth cable routing inside cause of the adapters positioning



Rear mounting assembly option

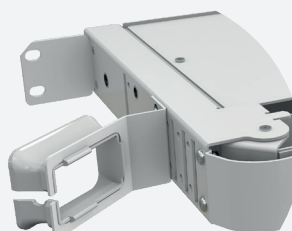


Adjustable depth in rack cause of Mounting brackets positioning



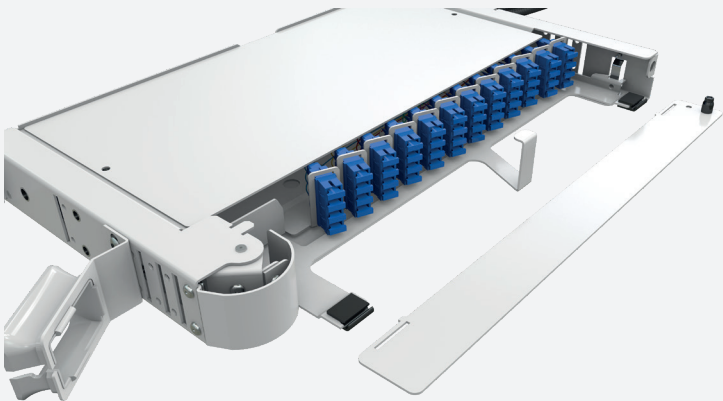
✓ Cable Organizer for Patchcords

Plastic jumper part organizes patchcords

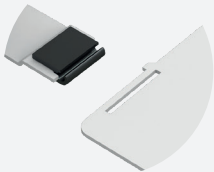


OFSM 1RU PATCH/SPLICE PANEL

Key Features

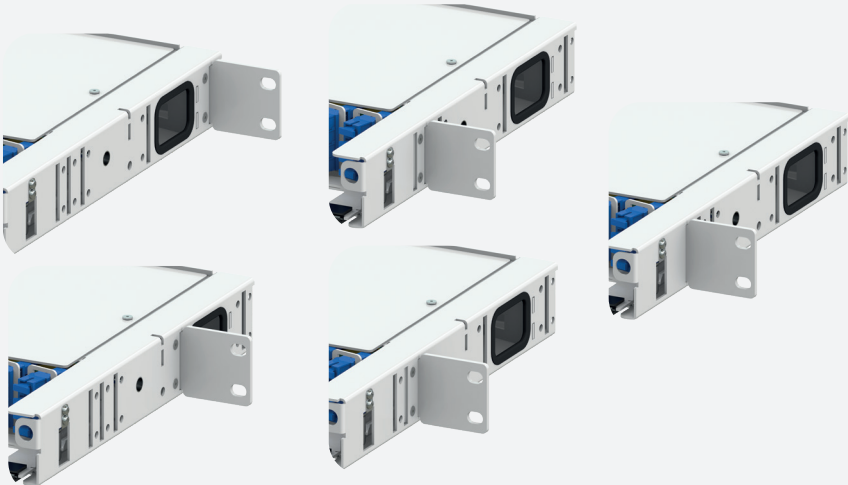
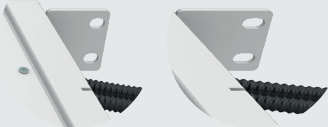


✓ Removable Front Cover



19" or 21" Mounting bracket option

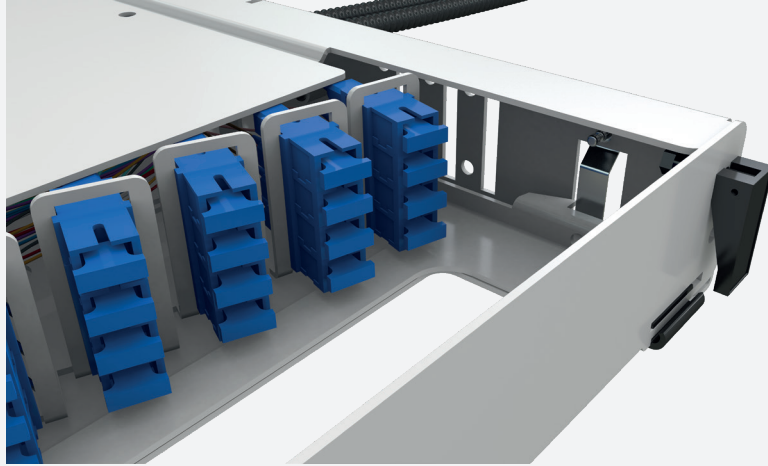
✓ Mounting Options



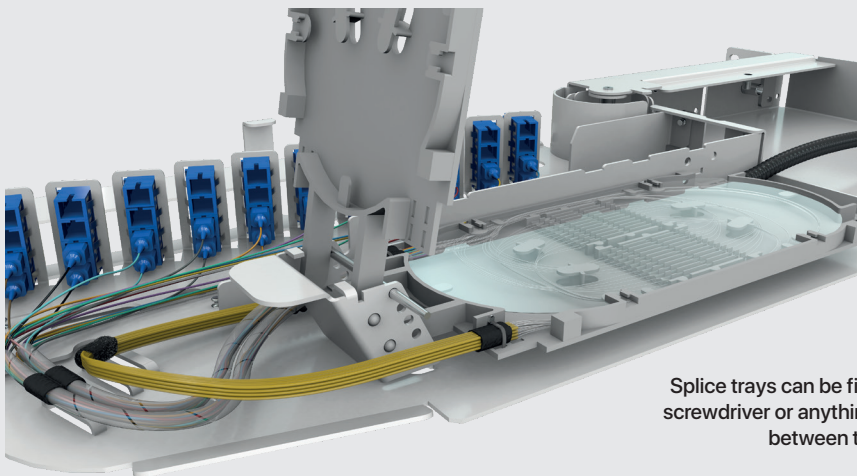
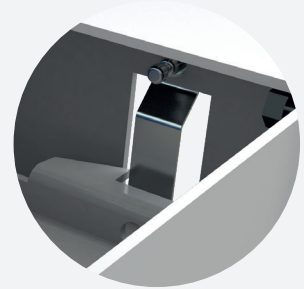
✓ Adapter Positioning

OFSM 1RU PATCH/SPLICE PANEL

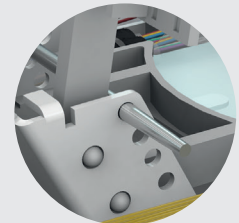
Key Features



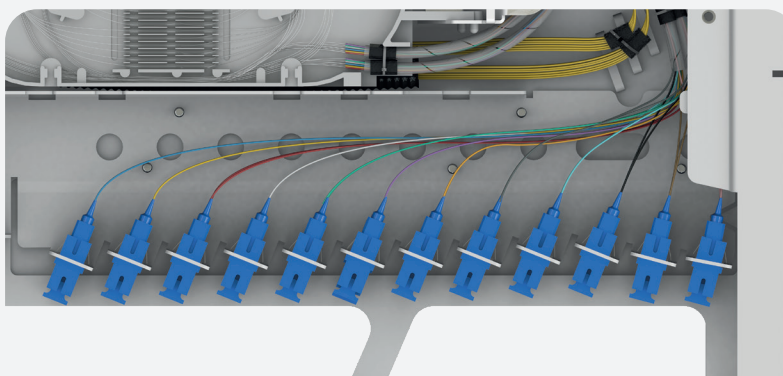
✓ Tray Secure Lock



✓ Splice Tray Holder

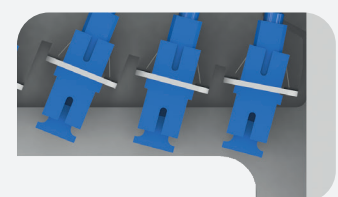


Splice trays can be fixed by inserting screwdriver or anything similar to that, between them.



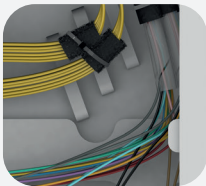
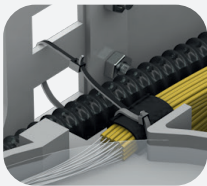
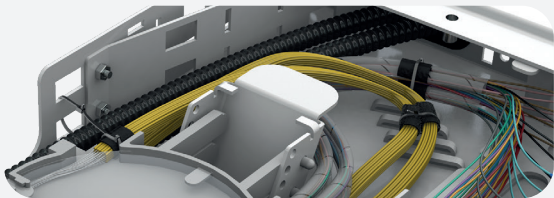
✓ Smooth Cable Angle

Adapter plate designed for efficient cable routing angle.



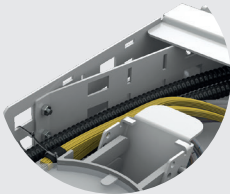
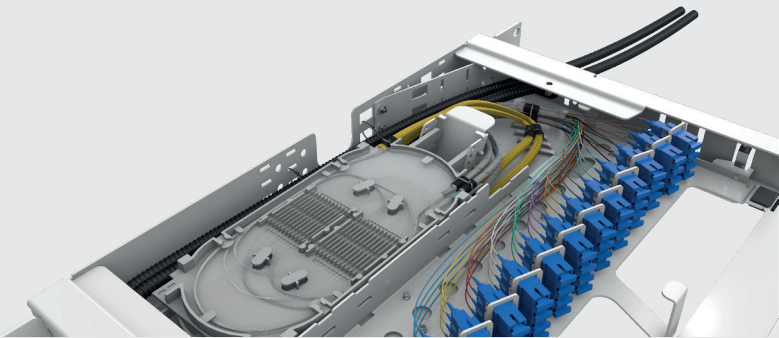
OFSM 1RU PATCH/SPLICE PANEL

Key Features



✓ Cable Fixing Points

Cable guide plate organizes inside routing

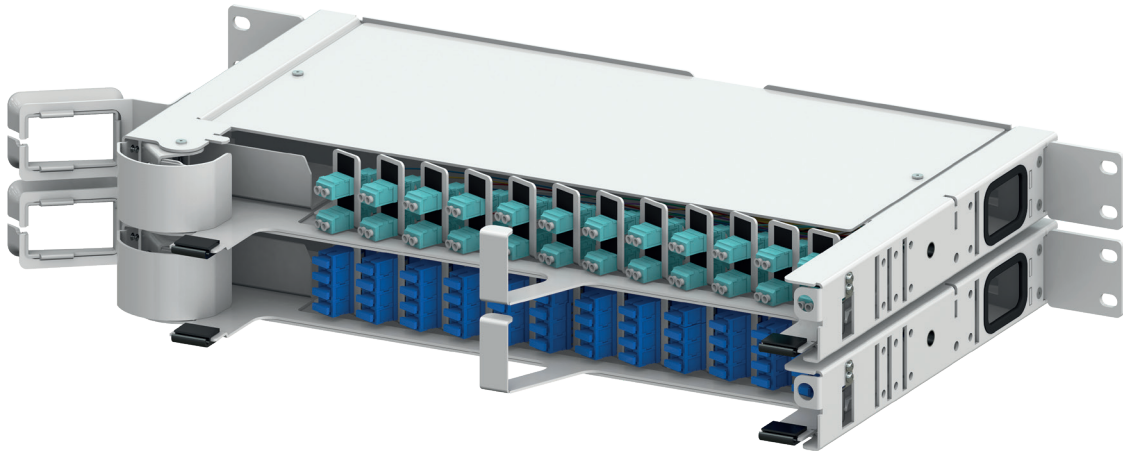


✓ Cable Guide Plate

Cable guide plate organizes inside routing

OFSM 1RU PATCH/SPLICE PANEL

Adapter Series

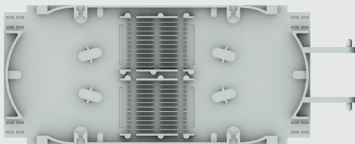


LC Duplex

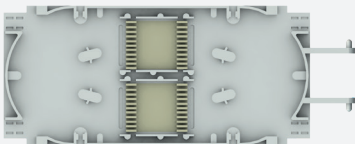


SC Simplex

Splice Tray Options



ALF-L-G
Capacity 48



ALF-L-H
Capacity 48




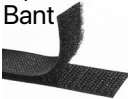




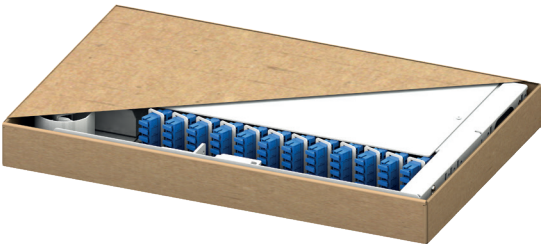
ALF-L-J
Capacity 48

OFSM 1RU PATCH/SPLICE PANEL

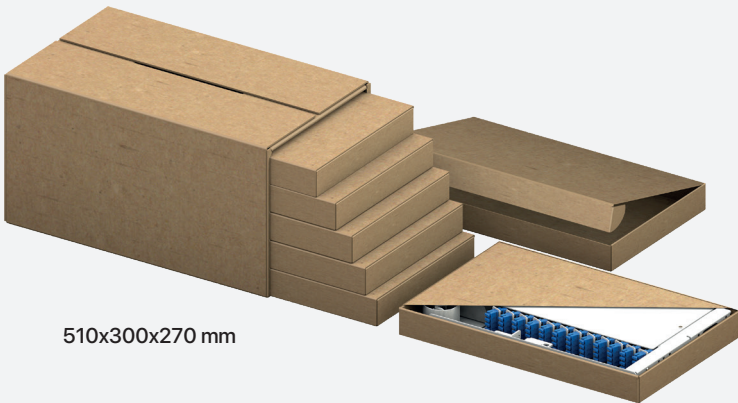
Packaging Details

Standart Accesories (Set)

	Jumper Kit	
	2,5 Allen Key	
	M6 Cage nut Set: Part Number : ST-007 (Black) ST-006 (Inox White) ST-003 (White)	
		Tire Wrap 3,5x150 Tire Wrap 2,5x150 Velcro Bant (One-sided) 50mm 25x120 Cable Velcro Bant Spiral Hose 20 cm PG11 Spiral Hose 20 cm



495x285x50 mm



510x300x270 mm

1 Outer Box includes
5 OFSM 1RU Fiber Optic Patch Panel.



1500mm

Pallet Weight ~640 kg

1 EUR Pallet includes;
100 OFSM 1RU Fiber Optic Patch Panel.

EUR pallet
1200x800 mm