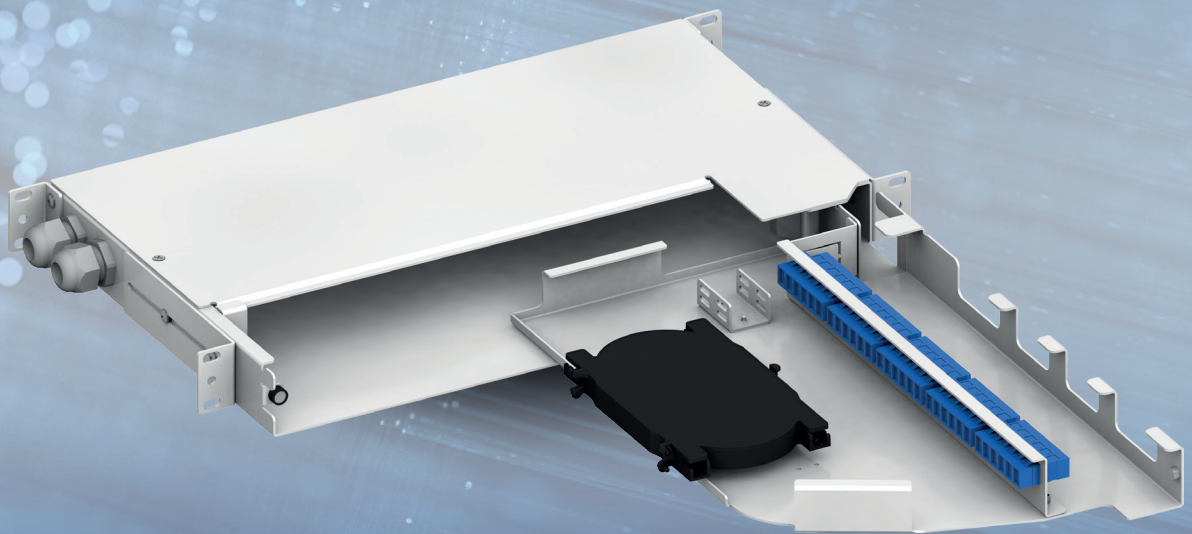


alfafonet[®]

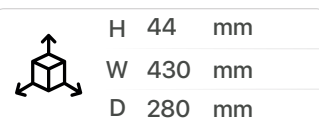
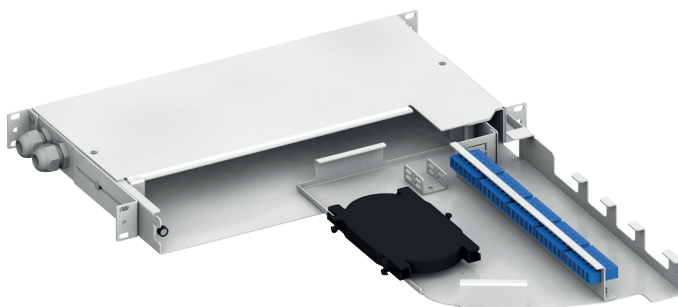
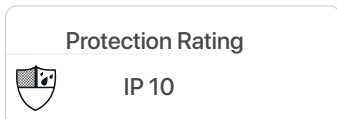
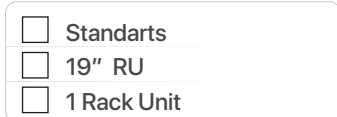
Complete Connectivity Solutions



OFSB 1RU FIBER OPTIC PATCH / SPLICE PANELS

**FIBER OPTIC PATCH PANELS
OFSB**

OFSB PIVOTSYSYSTEM FIBER OPTIC PATCH/SPLICE PANEL



PRODUCT OVERVIEW

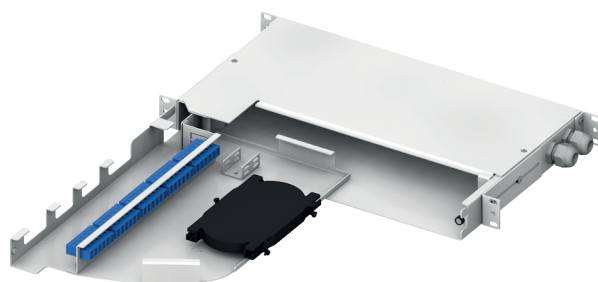
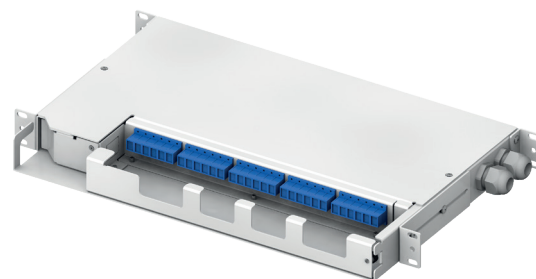
The PivotSystem1RU Fiber Termination Patch/Splice Panel is designed for use as a rack mount interconnect point where termination and connectivity of up to 48 fibers is desired. This solution allows for easy access to the front patch cords as well as the splice trays and pigtails after being swing out. Standard panels are available empty for complete field configuration, half-loaded with adaptor plates for field termination and cable assembly installation, or stubbed with a factory-installed cable assembly of a user specified length.

Features

- Fits comfortably into new and existing interconnect, cross-connect, customer premise, and co-location environments
- Most common connector styles and types available
- Compatible with industry standard equipment frames
- Modular design
- Swing-open front swing-out tray
- Optional splice tray kit for on site conversion to patch and splice panel

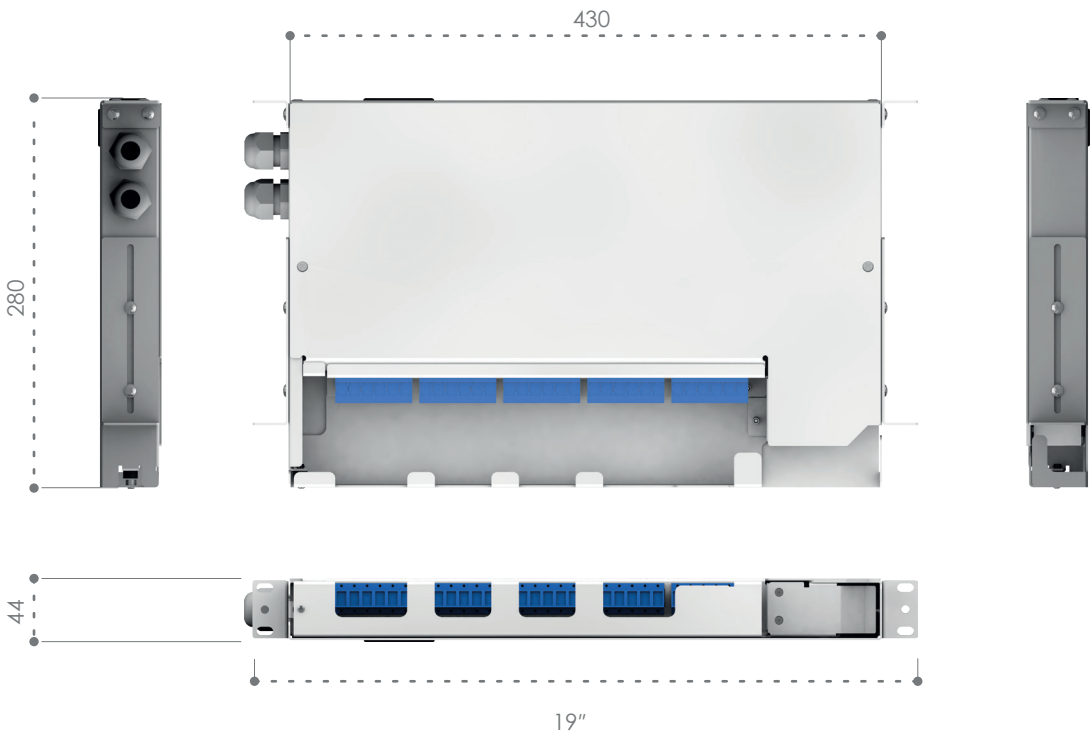
Specifications

- Aluminum Construction per ASTM B209
- Durable textured powder coat finish available in black or white
- Universal 19/21" EIA/TIA rack compatibility
- Standard density: up to 24 fiber,
High density: up to 48 fiber
- Front and back side mounting options
- Standard cable stub location is leftside
- Optional cable stub location is rear

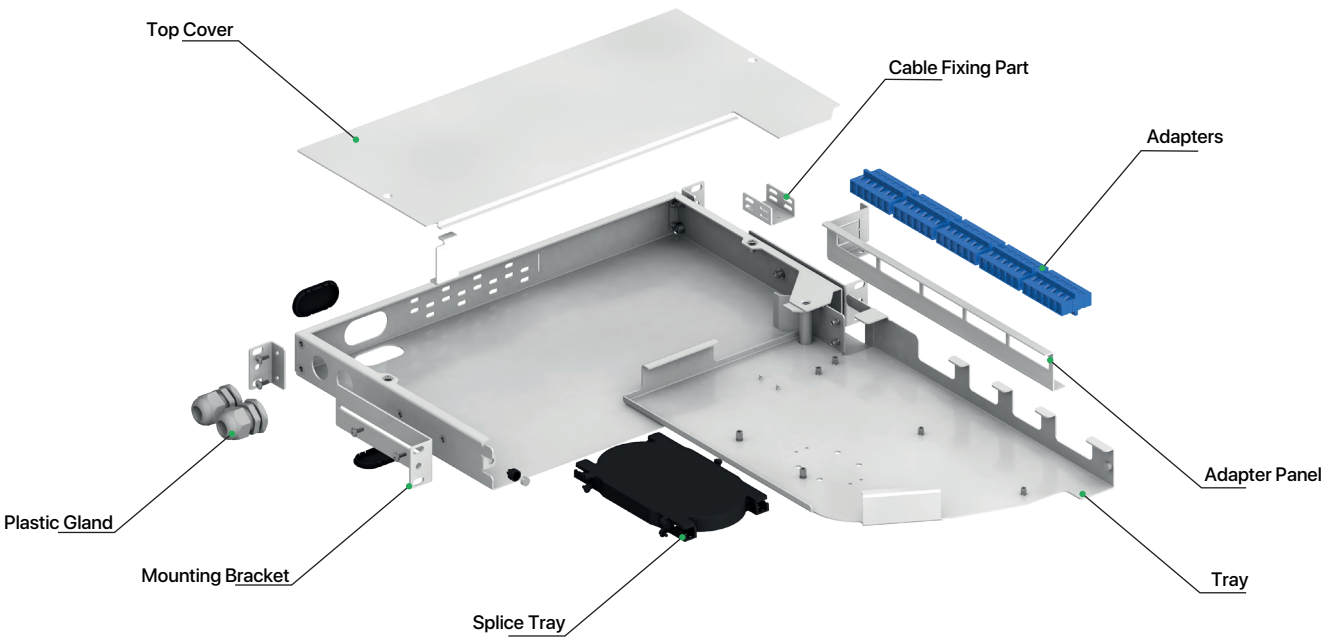


OFSB PIVOTSYSYSTEM FIBER OPTIC PATCH/SPLICE PANEL

Dimensions

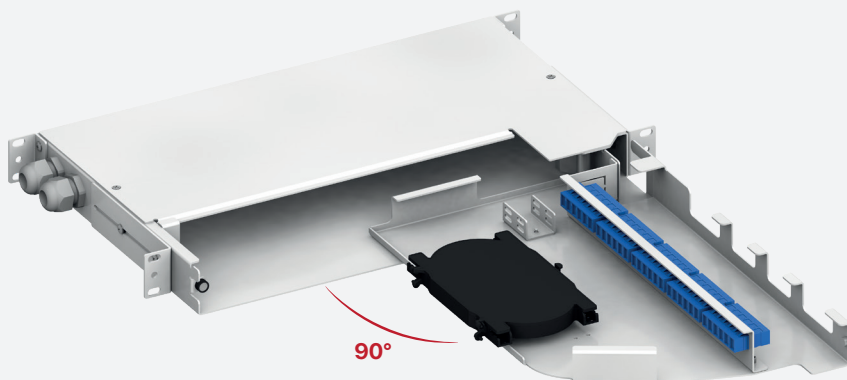


Exploded View

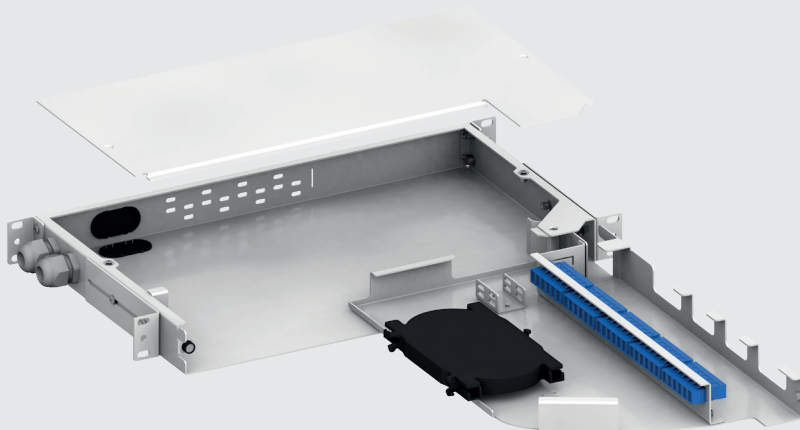


OFSB PIVOTSYSYSTEM FIBER OPTIC PATCH/SPLICE PANEL

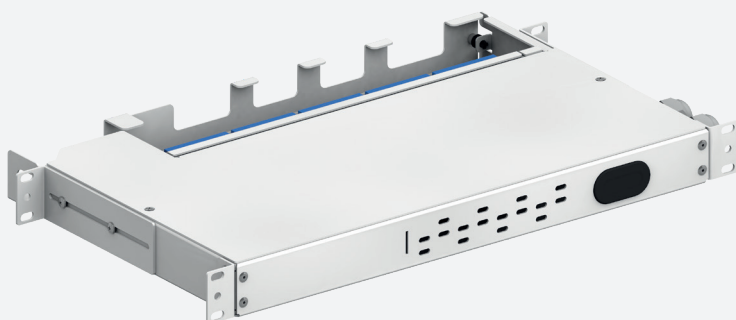
Key Features



✓ **Swing-open front swing-out tray**



✓ **Modular Design**



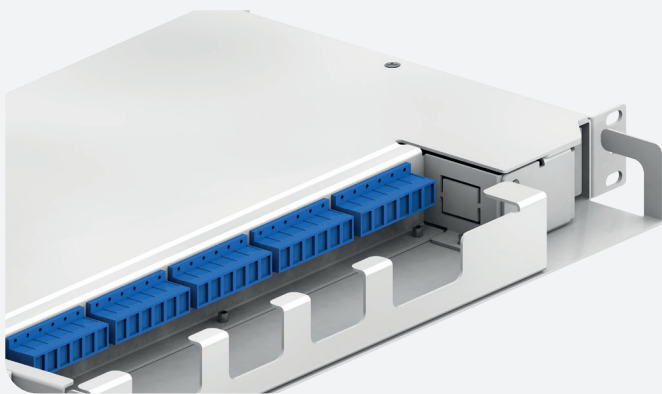
✓ **Cable Fixing**

Main cable can be fixed with cable fixing holes

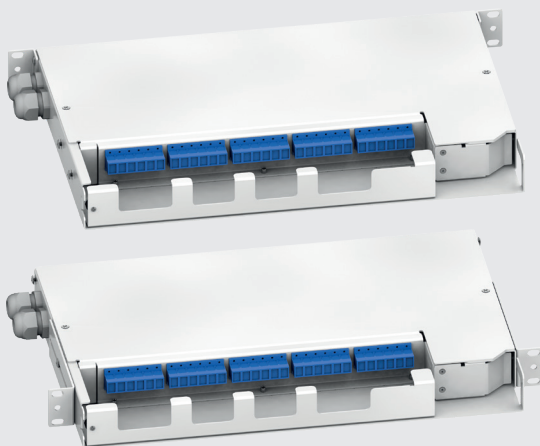
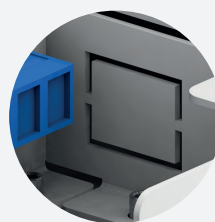


OFSB PIVOTSYSYSTEM FIBER OPTIC PATCH/SPLICE PANEL

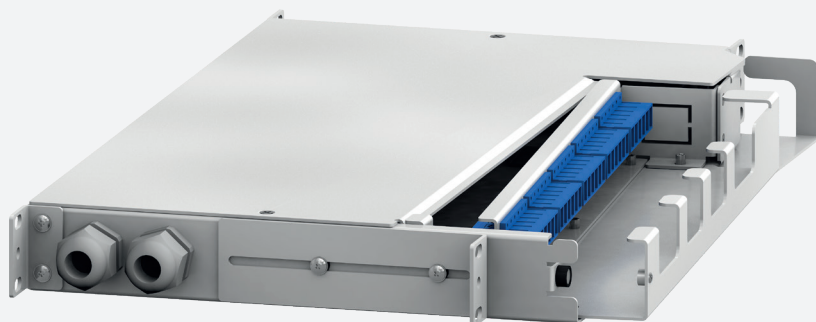
Key Features



✓ Front Cable Entry Hole



✓ Front and Back Mounting Option



✓ Secure Closing with Magnet

