

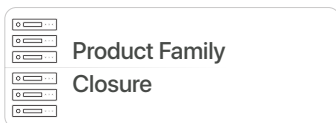
alfafonet[®]

Complete Connectivity Solutions



**OPGW
ALUMINIUM CLOSURE**

**CLOSURE
OPGW**

OPGW - ALUMINIUM CLOSURE

Product Family
Closure



H 808 mm
W 290 mm
D 305 mm



Weight

Net 13,1 kg
Gross 14 kg

PRODUCT OVERVIEW

The OPGW Aluminium Closure is a single-ended closure system specially developed for use on the optical grounding wires of overhead electrical power lines.

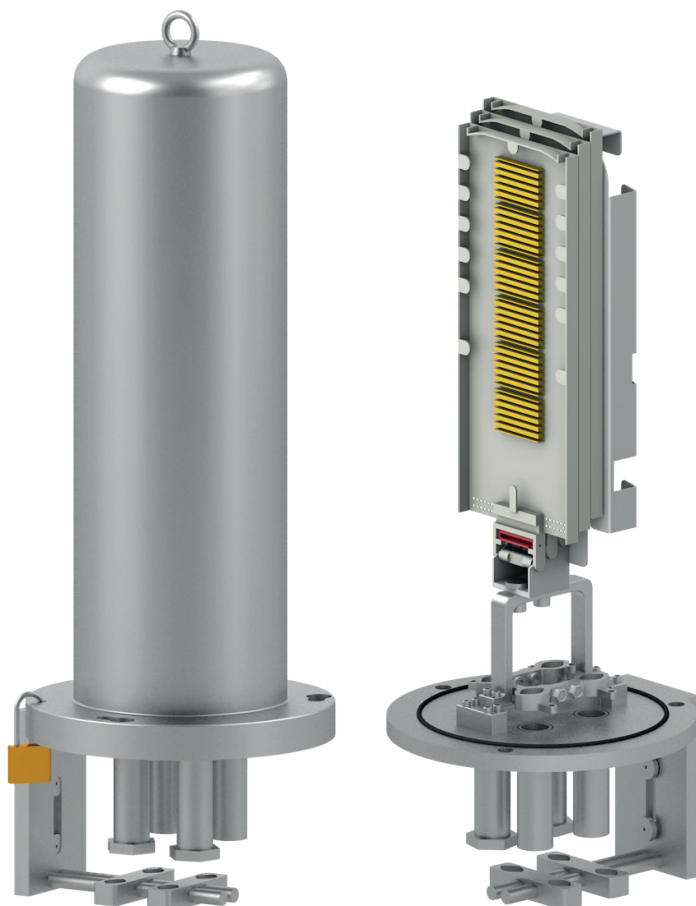
The closure is suitable for use above ground; it can be attached to high voltage towers, poles, walls or other support structures. One model can be used for track and spur joint applications.

Features

- The closure is suitable for installations on poles.
 - Protection degree of the closure – IP67
 - 4 Cable Entry Points
- Each entry cables diameters range: 6.5 – 25 mm
- OPGW cables, ADSS cables.
 - 216 Splice Capacity
 - 3 Splice Trays included
 - Fast and easy installation
 - Operating and Storage temperature: -10C to +60C.

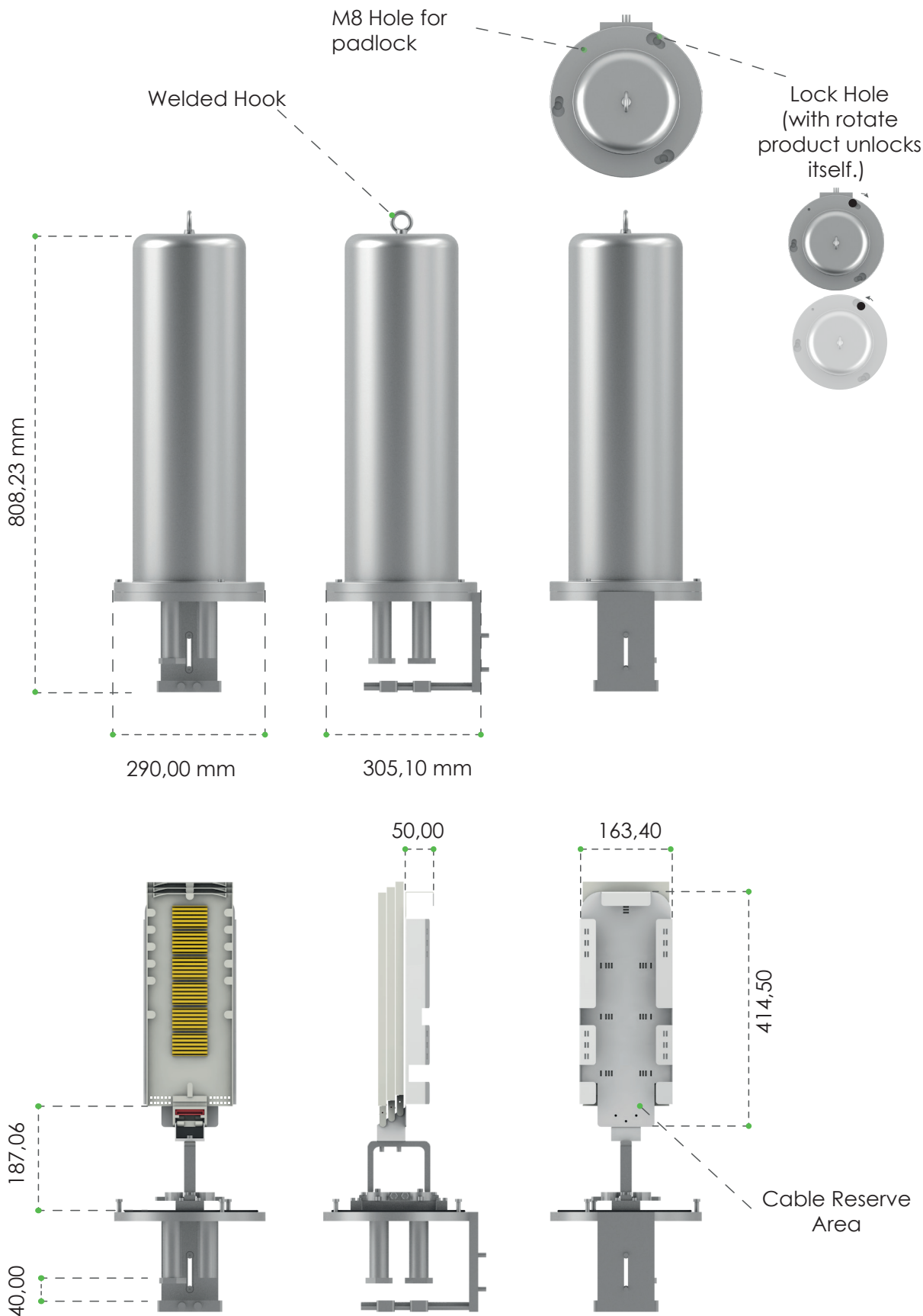
Specifications

- The installation kit shall include all the installation tools, accessories and materials required for complete closure installation.
- The closure shall be lockable by an external lock.
- The closure can be equipped with an eye-hook or other lifting device.
- All materials that will come into contact with personnel is non-toxic and not a potential environmental hazard.



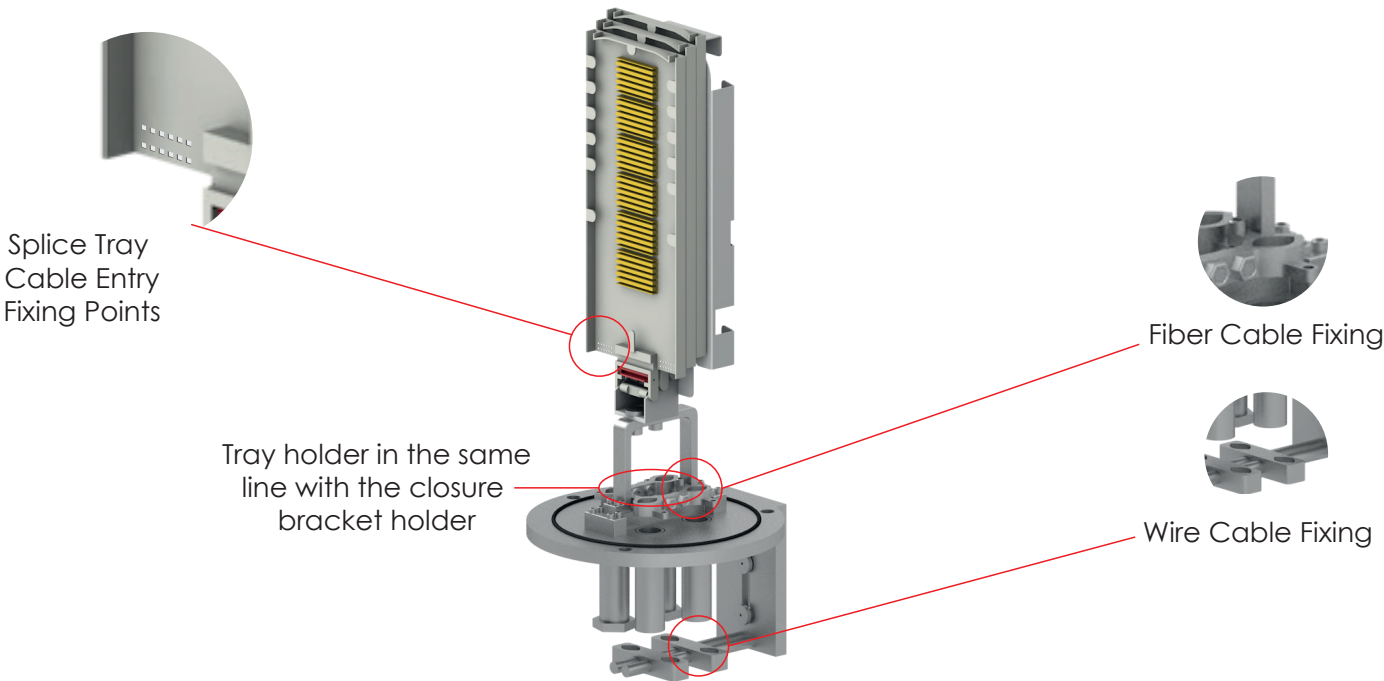
OPGW - ALUMINIUM CLOSURE

Dimensions

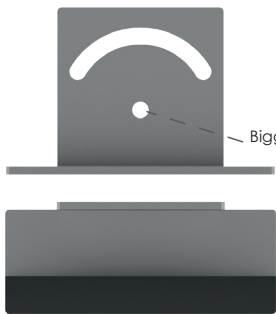
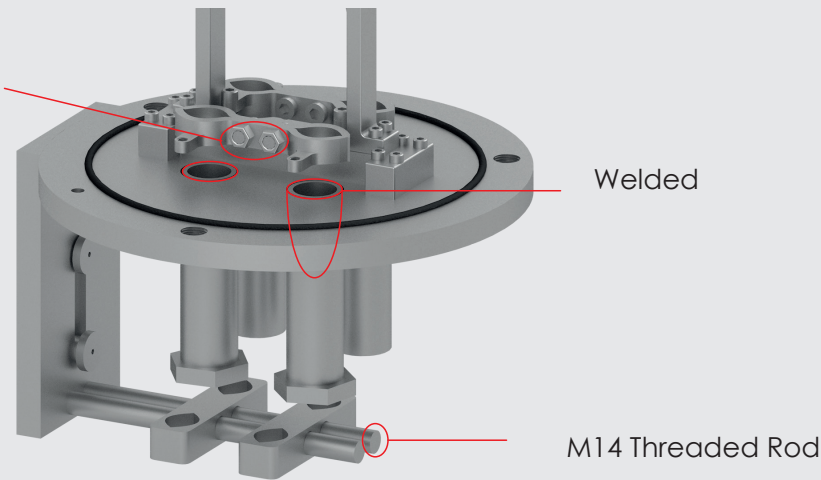


OPGW - ALUMINIUM CLOSURE

Key Features



Cable Fixing Parts tightened with double screw-nut combination



Mounting Bracket



Mounting Equipment