

16 & 24 PORT RJ45 PANEL



Product Family
Stable Type



Standards
19"
1 Rack Unit



Protection Rating
No Protection



H 44 mm
W 445 mm
D 100 mm



Available Colors:
Light Grey(RAL7035)
Black (RAL9005)



Weight
Net ~0,845 kg

PRODUCT OVERVIEW

The 16 & 24 port RJ45 Panels designed for Category 6 adapters, Patch Panels are available in 16 & 24 Port versions to accommodate installation requirements. Each panel has a silk screen printed field positioned above each port and there are cable fixing points on the rear side for each two ports for cable fixing. CAT6 Adapters can be easily assemble and remove as snap-in.

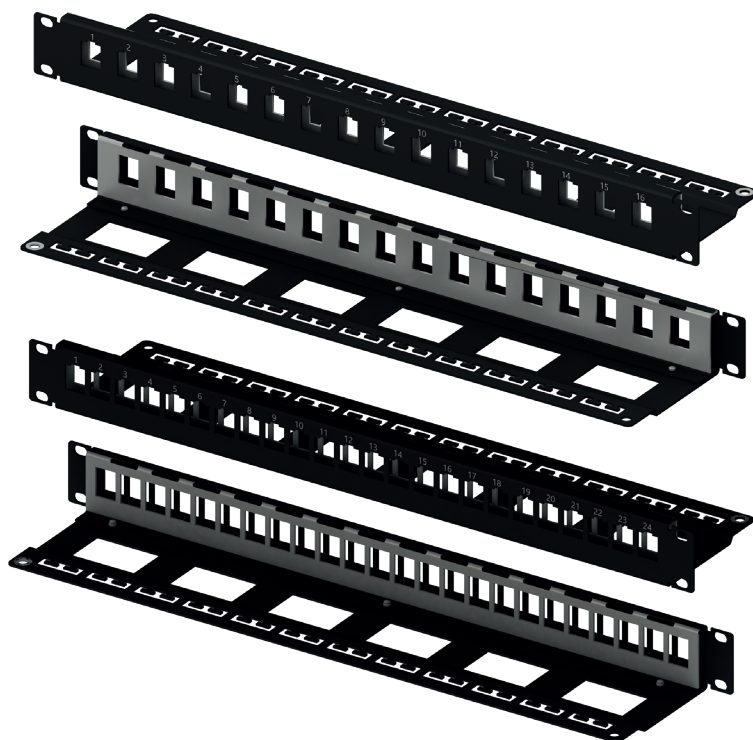
The 16 & 24 port RJ45 Panel made by corrosion-resistant alloys raw material and panel has robust structure with material thickness and unique body.

Features

- Fits comfortably into Category 6 class adapters
- Shielded Ports
- Robust Design
- Unique and compact body
- Double layer adapter plate

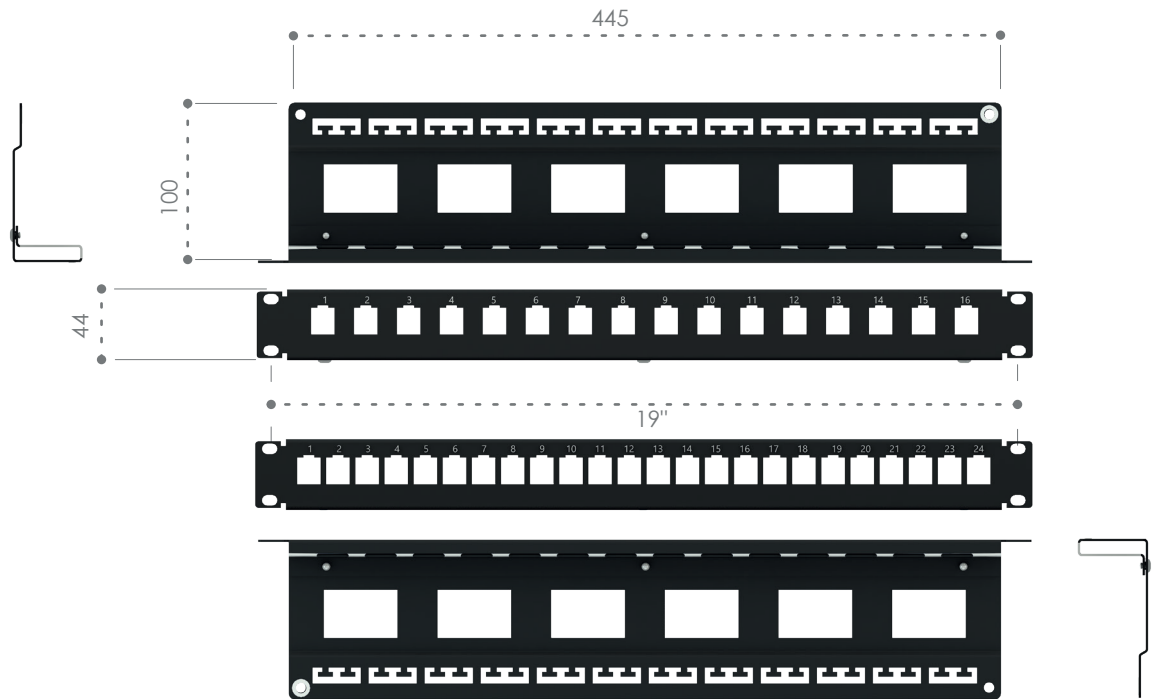
Specifications

- Corrosion-resistant alloys raw material
- Durable textured powder coat finish available in black or white
- Universal 19" EIA/TIA rack compatibility
- Standard density: up to 24 ports
- Standard grounding point
- Rear Cable fixing points

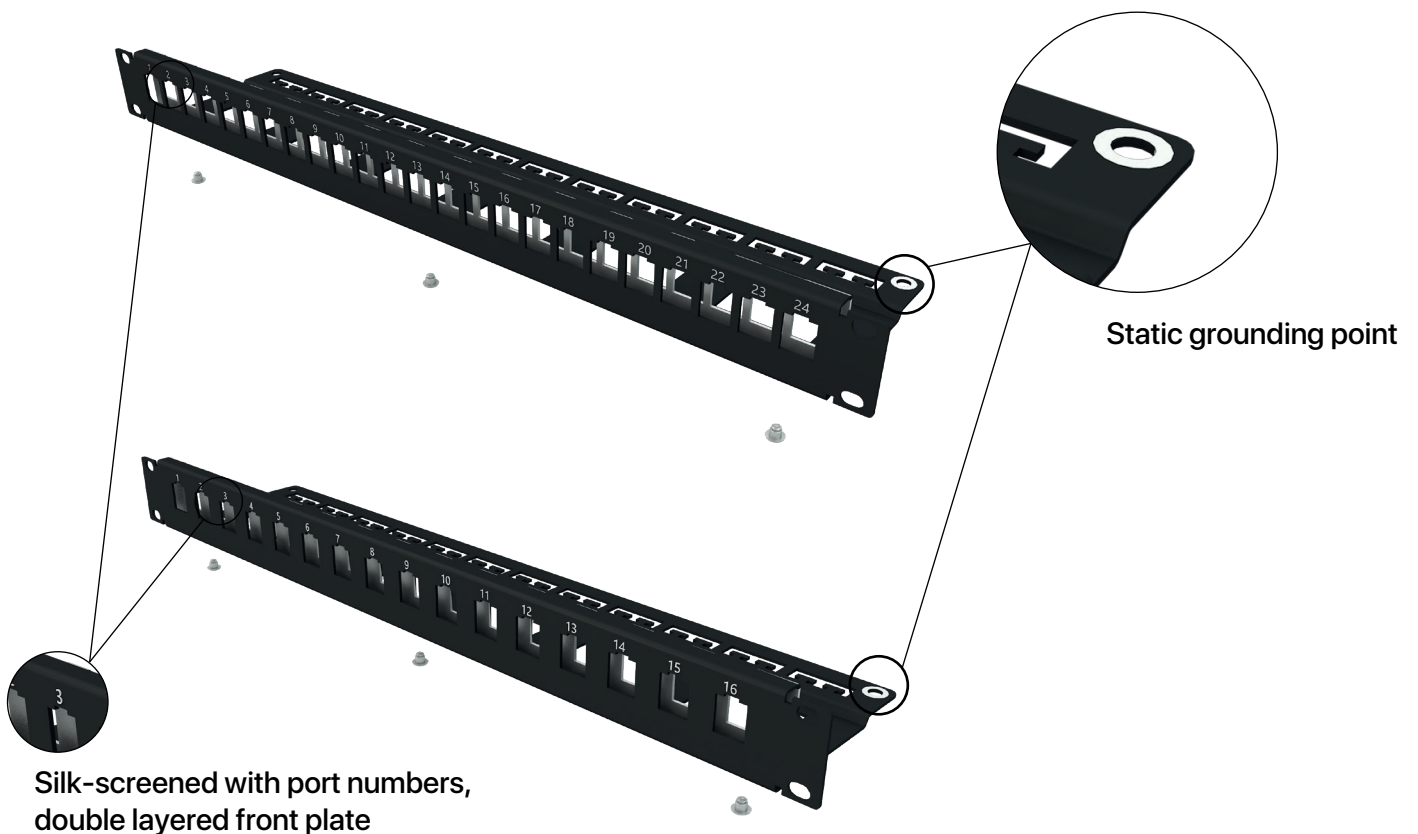


16 & 24 PORT RJ45 PANEL

Dimensions

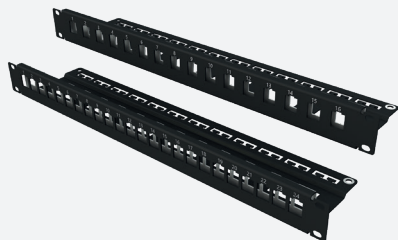


Exploded View

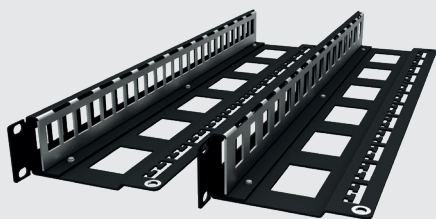


16 & 24 PORT RJ45 PANEL

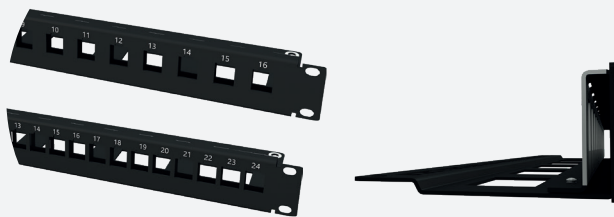
Key Features



✓ Corrosion-resistant alloys raw material

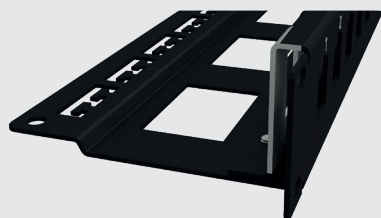


✓ Static grounding point

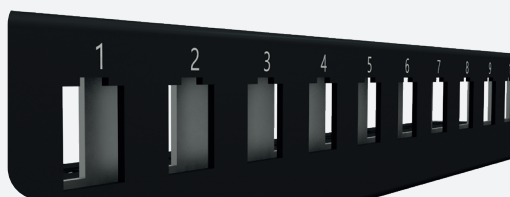


✓ Robust structure & Unique body

1.5 mm thickness



✓ Shielded double layer front plate



✓ Silk-Screened front plate

Ordering Guide

102038-BL.01

Assembled 16 Port RJ45 Plate (Black RAL9005)

102038-BL.01

Assembled 16 Port RJ45 Plate (Light Grey RAL7035)

102038-BL.02

Assembled 24 Port RJ45 Plate (Black RAL9005)

102038-LG.02

Assembled 24 Port RJ45 Plate (Light Grey RAL7035)